

CANTUA CREEK OPEN LAND

4.74± ACRES | FRESNO COUNTY, CALIFORNIA

\$25,000
\$5,274/ACRE



PROPERTY HIGHLIGHTS

- SURROUNDED BY PERMANENT PLANTINGS
- HIGHWAY ACCESS



www.pearsonrealty.com
CA DRE #00020875

FRESNO
7480 N. Palm Ave, Ste 101
Fresno, CA 93711
559.432.6200

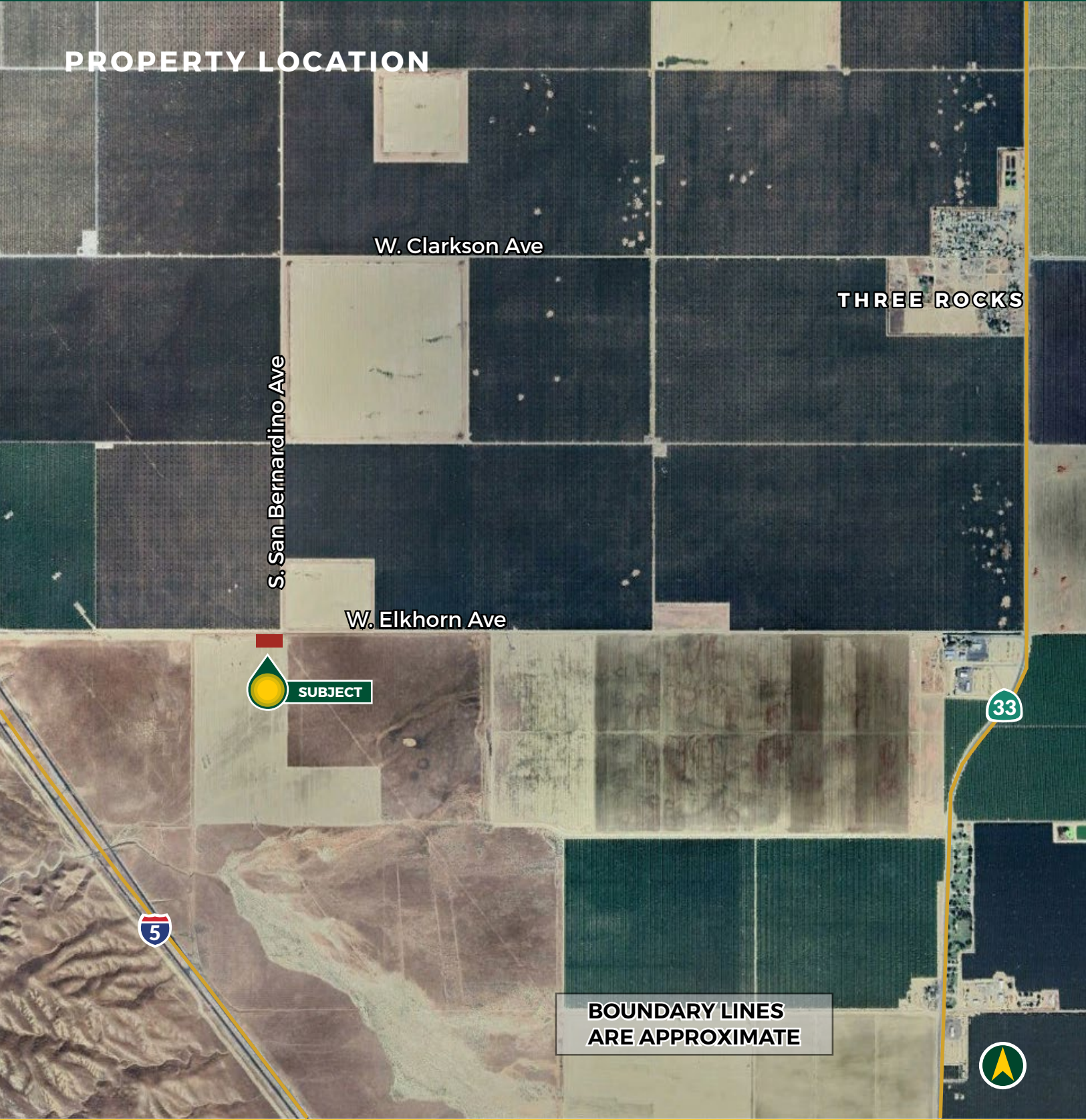
VISALIA
3447 S. Demaree St.
Visalia, CA 93277
559.732.7300

BAKERSFIELD
4900 California Ave., #210B
Bakersfield, CA 93309
661.334.2777



All information contained herein is deemed reliable but not guaranteed by seller nor broker and should be independently verified by potential buyers. We assume no liability for errors or omissions.

PROPERTY LOCATION



PROPERTY INFORMATION

DESCRIPTION

Open land just west of Cantua Creek in southwest Fresno County. Property is surrounded by almonds, pistachios and vineyards.

LOCATION

Southwest Fresno County. Access is on Elkhorn Avenue and Highway 33.

LEGAL

Fresno County APN: 045-040-03 located in a portion of Section 2, T17S, R14E, M.D.B.&M.

BUILDINGS/STRUCTURES

None.

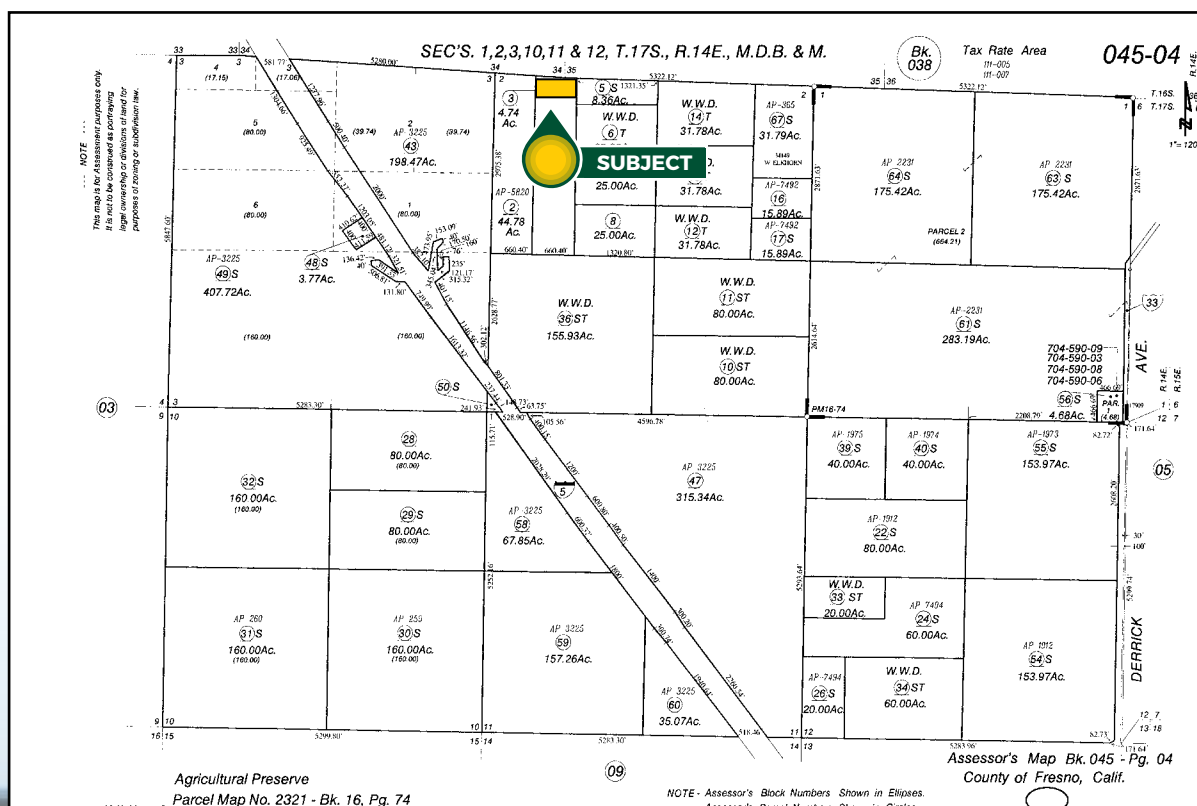
WATER

None

PRICE/TERMS

\$25,000 all cash at close of escrow

APN MAP



EXCLUSIVELY PRESENTED BY:
A DIVISION OF PEARSON COMPANIES



A Tradition In Trust Since 1919

OFFICES SERVING THE CENTRAL VALLEY

FRESNO

7480 N. Palm Ave, Ste 101
Fresno, CA 93711
559.432.6200

VISALIA

3447 S. Demaree St.
Visalia, CA 93277
559.732.7300

BAKERSFIELD

4900 California Ave., #210B
Bakersfield, CA 93309
661.334.2777

www.pearsonrealty.com

CA DRE #00020875

