

SAN JOAQUIN HOME LOT

.17± ACRES | FRESNO COUNTY, CALIFORNIA

\$25,000



PROPERTY HIGHLIGHTS

- LOCATED NEAR ELEMENTARY SCHOOL
- READY FOR DEVELOPMENT



www.pearsonrealty.com
CA DRE #00020875

FRESNO
7480 N. Palm Ave, Ste 101
Fresno, CA 93711
559.432.6200

VISALIA
3447 S. Demaree St.
Visalia, CA 93277
559.732.7300

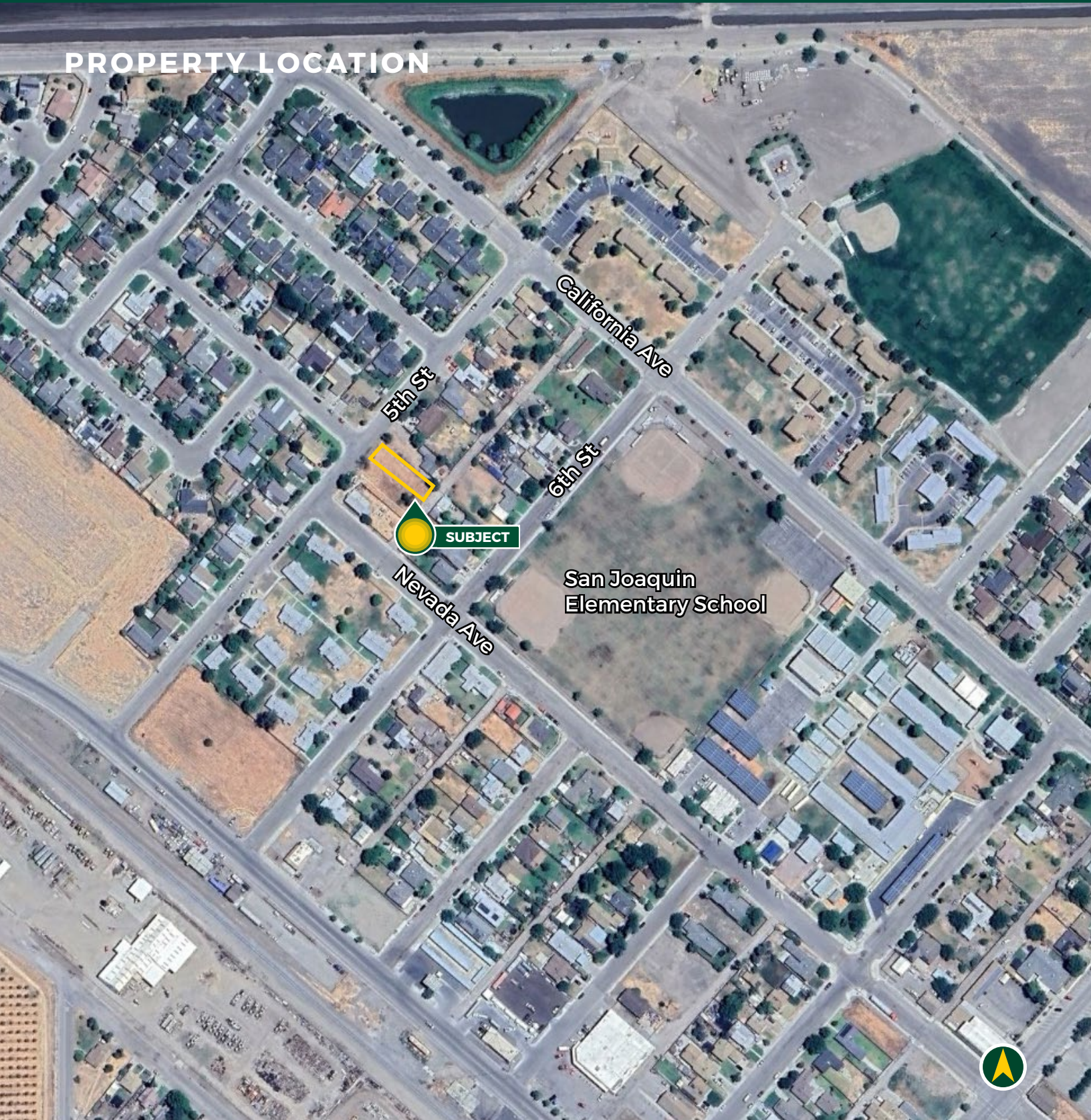
BAKERSFIELD
4900 California Ave., #210B
Bakersfield, CA 93309
661.334.2777



All information contained herein is deemed reliable but not guaranteed by seller nor broker and should be independently verified by potential buyers. We assume no liability for errors or omissions.

SAN JOAQUIN HOME LOT
FRESNO COUNTY, CA | .17± ACRES

PROPERTY LOCATION



PROPERTY INFORMATION

DESCRIPTION

The open home lot is ready for home development.

LOCATION

West Fresno County near San Joaquin Elementary in the town of San Joaquin. Faces 5th Street between California and Nevada Avenues.

LEGAL

Fresno County APN: 033-072-02s located in a portion of Section 23, T15S, R16E, M.D.B.&M.

ZONING

R1

APN MAP

BUILDINGS/STRUCTURES

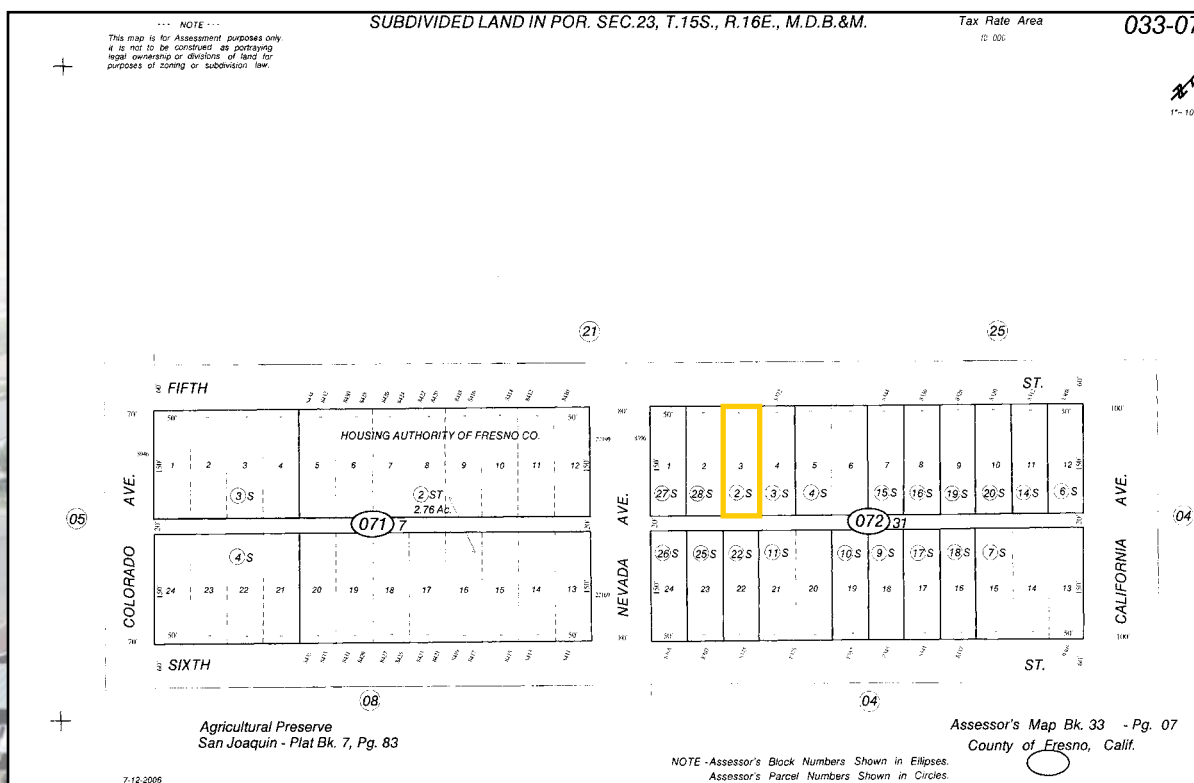
None.

WATER

City water

PRICE/TERMS

\$25,000 all cash at close of escrow



EXCLUSIVELY PRESENTED BY:
A DIVISION OF PEARSON COMPANIES



106
YEARS

A Tradition In Trust Since 1919

OFFICES SERVING THE CENTRAL VALLEY

FRESNO

7480 N. Palm Ave, Ste 101
Fresno, CA 93711
559.432.6200

VISALIA

3447 S. Demaree St.
Visalia, CA 93277
559.732.7300

BAKERSFIELD

4900 California Ave., #210B
Bakersfield, CA 93309
661.334.2777

www.pearsonrealty.com

CA DRE #00020875

