

IVANHOE OPEN GROUND

Tulare County, California

24.62± Acres

\$450,000



- Great Location
- Good Soils
- Close to Town



**PEARSON
REALTY**
AGRICULTURAL PROPERTIES
A Tradition in Trust Since 1919

Offices Serving The Central Valley

FRESNO

7480 N. Palm Ave., Ste 101
Fresno, CA 93711
559.432.6200

VISALIA

3447 S. Demaree Street
Visalia, CA 93277
559.732.7300

BAKERSFIELD

4900 California Ave., #210B
Bakersfield, CA 93309
661.334.2777

www.pearsonrealty.com

Exclusively Presented by:

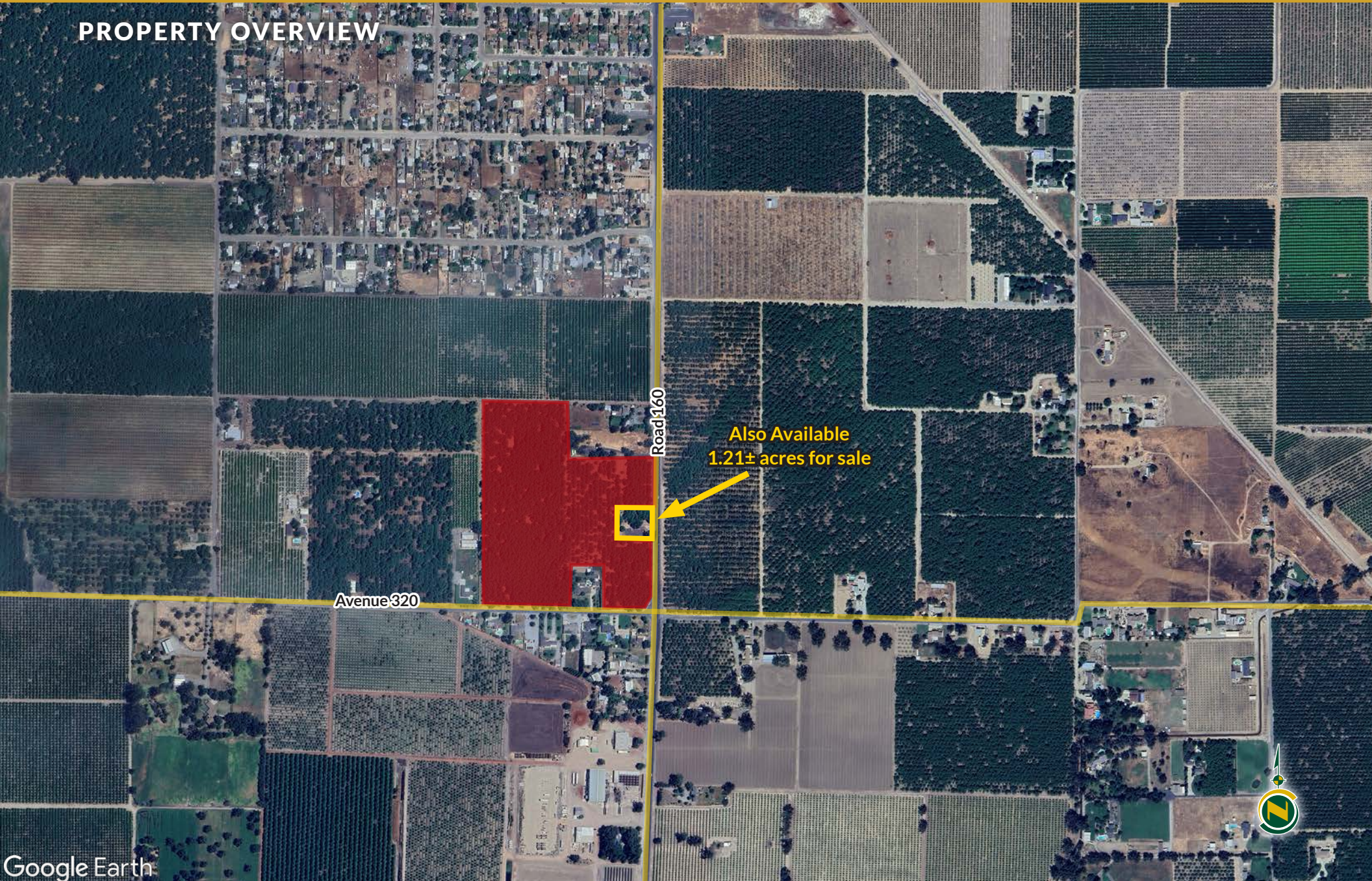


IVANHOE OPEN GROUND

24.62± Acres
Tulare County, CA



PROPERTY OVERVIEW



Google Earth

IVANHOE OPEN GROUND

24.62± Acres
Tulare County, CA



Offices Serving The Central Valley

FRESNO

7480 N. Palm Ave, Ste 101
Fresno, CA 93711
559.432.6200

VISALIA

3447 S. Demaree Street
Visalia, CA 93277
559.732.7300

BAKERSFIELD

4900 California Ave., #210B
Bakersfield, CA 93309
661.334.2777



Download Our
Mobile App!

<http://pearsonrealty.com/mobileapp>



Water Disclosure: The Sustainable Groundwater Management Act (SGMA) was passed in 2014, requiring groundwater basins to be sustainable by 2040. SGMA requires a Groundwater Sustainability Plan (GSP) by 2020. SGMA may limit the amount of well water that may be pumped from underground aquifers. Buyers and tenants to a real estate transaction should consult with their own water attorney; hydrologist; geologist; civil engineer; or other

environmental professional. Additional information is available at: California Department of Water Resources Sustainable Groundwater Management Act Portal - <https://sgma.water.ca.gov/portal/> Telephone Number: (916) 653-5791 **Policy on cooperation: All real estate licensees are invited to offer this property to prospective buyers. Do not offer to other agents without prior approval.**