

# GOULARTE FARMS ALMONDS

Fresno County, California

120.00± Acres

\$2,160,000

(\$18,000/Acre)

**PRICE REDUCED**



- Liberty W. D.
- Irrigation Pump & Well
- Metal Shop
- Rental House



**PEARSON  
REALTY**  
AGRICULTURAL PROPERTIES  
*A Tradition in Trust Since 1919*

## Offices Serving The Central Valley

### FRESNO

7480 N. Palm Ave, Ste 101  
Fresno, CA 93711  
559.432.6200

### VISALIA

3447 S. Demaree Street  
Visalia, CA 93277  
559.732.7300

### BAKERSFIELD

4900 California Ave., #210B  
Bakersfield, CA 93309  
661.334.2777

[www.pearsonrealty.com](http://www.pearsonrealty.com)

Exclusively Presented by:



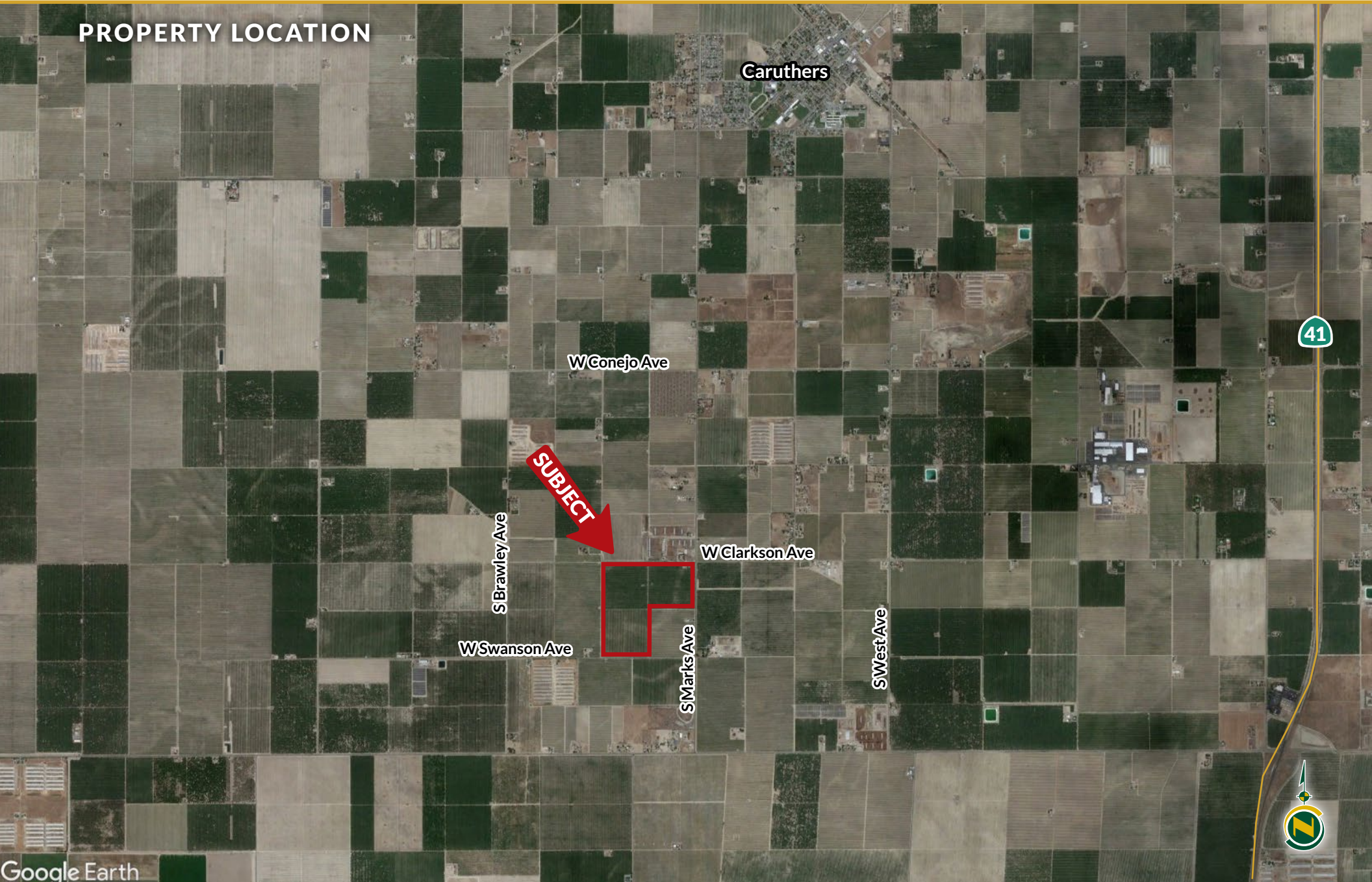


# GOULARTE FARMS ALMONDS

120.00± Acres  
Fresno County, CA



## PROPERTY LOCATION



Google Earth

# GOULARTE FARMS ALMONDS

120.00± Acres  
Fresno County, CA



## PROPERTY INFORMATION

### DESCRIPTION

A great opportunity to acquire 120± of almonds in the desirable Caruthers farming area.

### LOCATION

120± acre Clarkson Avenue almonds located on the southwest corner of Clarkson and Marks Avenues.

### LEGAL

Fresno County APN's:

041-240-09s, 20.00± Acs.

041-240-10s, 20.00± Acs.

041-240-12s, 74.15± Acs.

041-240-21s, 5.85± Acs.

Located in a portion of Section 36, T16S, R19E, M.D.B.&M.

### ZONING

Zoned AE-20.

### PLANTINGS

APN	ACRES	WATER DISTRICT	CROP	VARIETY	PLANTED	ZONING	WILLIAMSON ACT
041-240-09s	20.00±	L.W.D	Almonds	IND	2015	AE-20	Yes
041-240-10s	20.00±	L.W.D.	Almonds	IND	2015	AE-20	Yes
041-240-12s	74.15±	L.W.D.	Almonds	NP/IND	2012	AE-20	No
041-240-21s	5.85±	L.W.D.	Almonds	NP/IND	2012	AE-20	No

### WATER

The property is in Liberty Water District, part of the North Fork Kings GSA. No shares are owned by Seller, however excess water can be available for purchase during flood years. There is a 200 HP turbine pump & well and filter station. The orchard is irrigated by dual line drip system.

### SOILS

Please refer to soils map included.

### BUILDINGS

There is a 988± square foot rental house built in 1920 that is currently occupied (16027 S. Marks Ave, Caruthers, CA 93609), along with a newer 1,800± square foot metal shop.

### PRICE/TERMS

\$2,160,000 (\$18,000/ac) cash at the close of escrow. Buyer to reimburse Seller for cultural costs toward the 2024 crop.



# GOULARTE FARMS ALMONDS

120.00± Acres  
Fresno County, CA



## PROPERTY OVERVIEW

Clarkson Ave

80.00± Acres  
Nonpareil  
Independence  
Almonds  
16' x 21' - Dual Line Drip  
2012

1,800± s/f  
Metal Shop



Rental House



200 HP Turbine

### Legend

Well



Filter Station



40.00± Acres  
Independence  
Almonds  
15' x 20'  
Dual Line Drip  
2015

Swanson Ave

Marks Ave





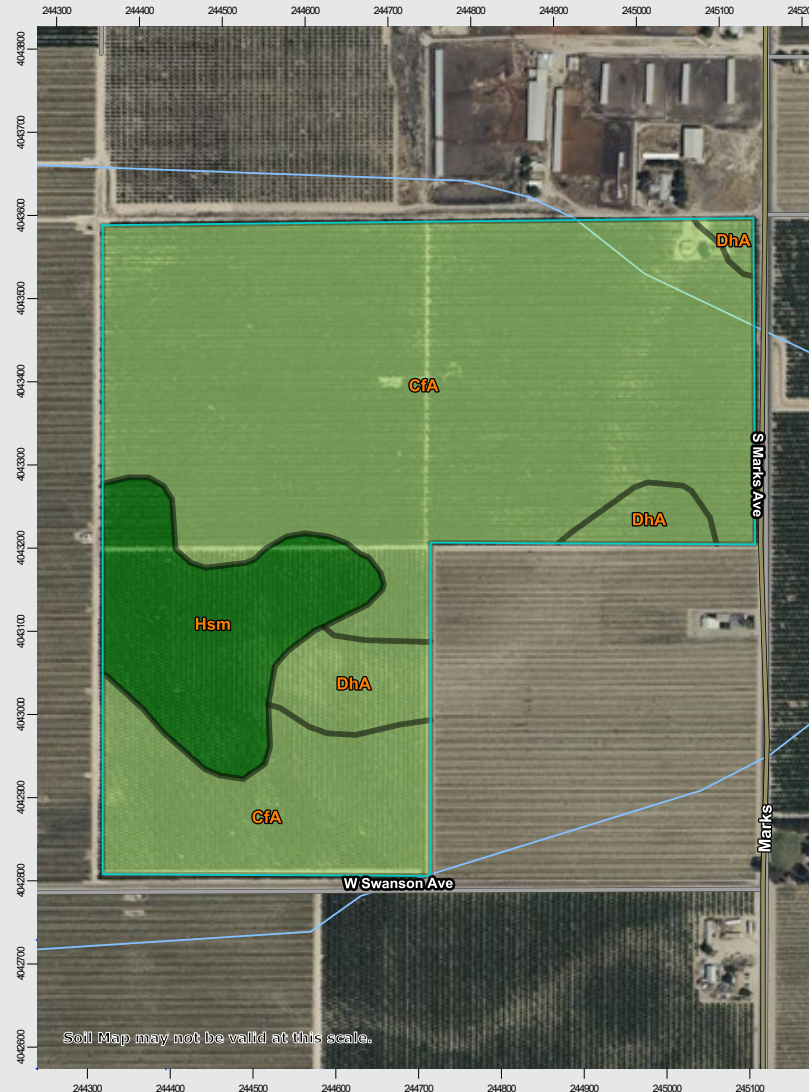
# GOULARTE FARMS ALMONDS

120.00± Acres  
Fresno County, CA



## SOILS MAP

California Revised Storie Index (CA)		
Map unit symbol	Map unit name	Rating
CfA	Calhi loamy sand, 0-3% slopes	Grade 2 - Good
Hsm	Hesperia sandy loam, deep	Grade 1 - Excellent
DhA	Delhi loamy sand, 0-3% slopes, MLRA 17	Grade 2 - Good

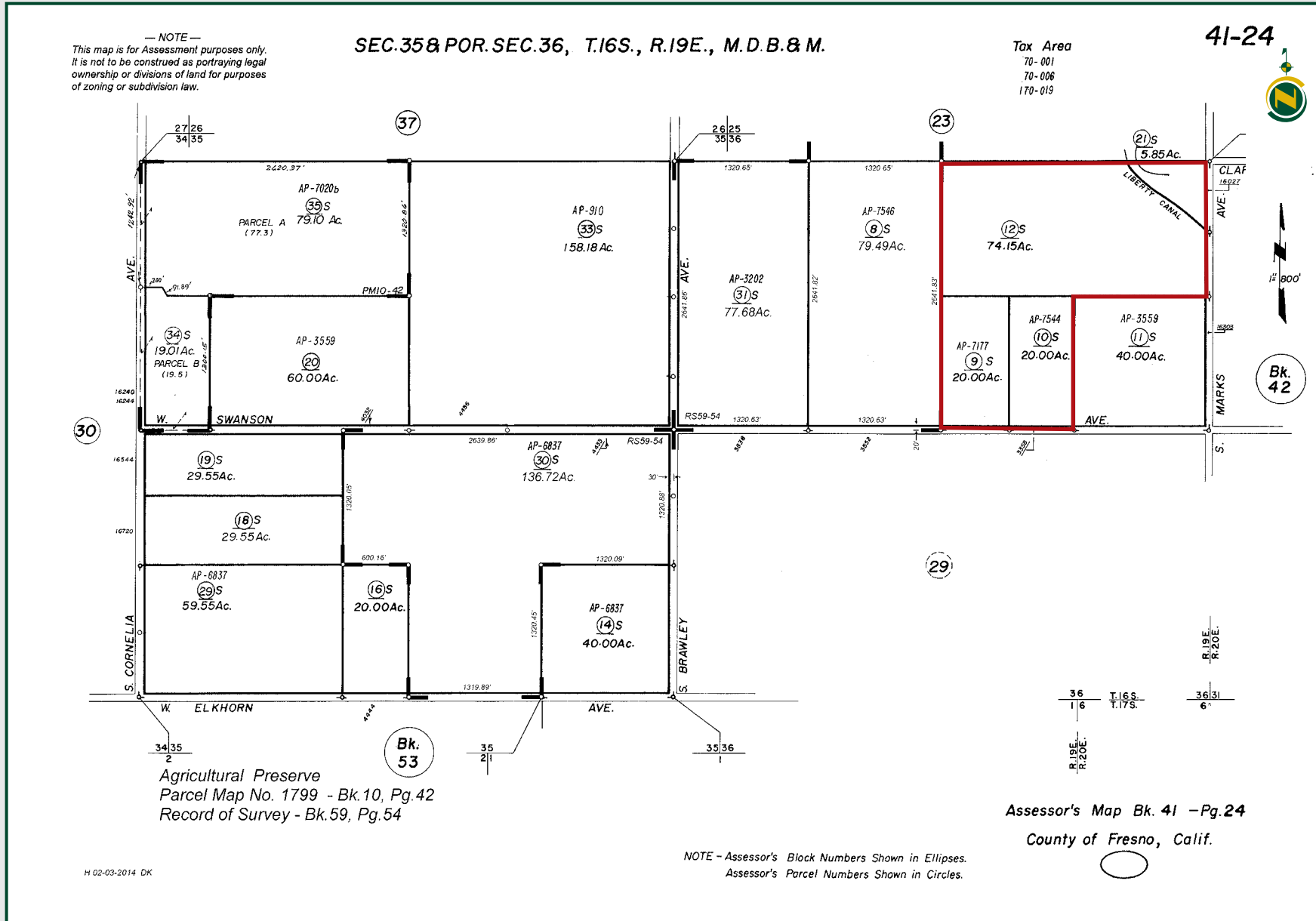


# GOULARTE FARMS ALMONDS

120.00± Acres  
Fresno County, CA



## PARCEL MAP





# GOULARTE FARMS ALMONDS

120.00± Acres  
Fresno County, CA



## PROPERTY PHOTOS





# GOULARTE FARMS ALMONDS

120.00± Acres  
Fresno County, CA



## Offices Serving The Central Valley

### FRESNO

7480 N. Palm Ave, Ste 101  
Fresno, CA 93711  
559.432.6200

### VISALIA

3447 S. Demaree Street  
Visalia, CA 93277  
559.732.7300

### BAKERSFIELD

4900 California Ave., #210B  
Bakersfield, CA 93309  
661.334.2777



Download Our  
Mobile App!

<http://pearsonrealty.com/mobileapp>



**Water Disclosure:** The Sustainable Groundwater Management Act (SGMA) was passed in 2014, requiring groundwater basins to be sustainable by 2040. SGMA requires a Groundwater Sustainability Plan (GSP) by 2020. SGMA may limit the amount of well water that may be pumped from underground aquifers. Buyers and tenants to a real estate transaction should consult with their own water attorney; hydrologist; geologist; civil engineer; or other

environmental professional. Additional information is available at: California Department of Water Resources Sustainable Groundwater Management Act Portal - <https://sgma.water.ca.gov/portal/> Telephone Number: (916) 653-5791 **Policy on cooperation: All real estate licensees are invited to offer this property to prospective buyers. Do not offer to other agents without prior approval.**