

444 RANCH MATURE WALNUTS

Tulare County, California

67.16± Acres

\$1,628,000
(\$24,000±/Acre)



- Highway 198 Corridor
- Industrial Designation
- Good Soil and Water
- Farnersville City Influence



**PEARSON
REALTY**
AGRICULTURAL PROPERTIES
A Tradition in Trust Since 1919

Offices Serving The Central Valley

FRESNO

7480 N. Palm Ave, Ste 101
Fresno, CA 93711
559.432.6200

VISALIA

3447 S. Demaree Street
Visalia, CA 93277
559.732.7300

BAKERSFIELD

4900 California Ave., #210B
Bakersfield, CA 93309
661.334.2777

www.pearsonrealty.com

Exclusively Presented by:



444 RANCH MATURE WALNUTS

67.16± Acres
Tulare County, CA



PROPERTY LOCATION



444 RANCH MATURE WALNUTS

67.16± Acres
Tulare County, CA



PROPERTY INFORMATION

DESCRIPTION

Situated on the northern boundary of the Farmersville city limits adjacent to the Retail stores along the Highway 198 frontage road. This 67.16± acre walnut orchard is irrigated by a 50Hp above ground turbine Ag well. The property consists of 3 APN's, with 2 of the APN's being designated Industrial as per the Farmersville General Plan.

LOCATION

The entrance of the subject property is located adjacent to Noble (Avenue 296) approximately ¼ mile west of Farmersville Boulevard along the Highway 198 corridor.

LEGAL

Tulare County APN# 128-260-006, 009, 010 (67.16 ± acres).

ZONING

The property is zoned AE-20/Industrial.

WATER

Single source - 1 Ag well, 50Hp above ground turbine motor.

SOIL

Nord Fine Sandy Loam, 0 to 2 percent slopes/Grade 1 – Excellent.

PLANTINGS

37.00± acres Lompoc variety walnuts on English rootstock.
13.00± acres Sunland variety walnuts on English rootstock.
30.00± acres Chandler variety walnuts on English rootstock.
17.00± acres open ground.

PRICE/TERMS

The asking price is \$1,628,000 (\$24,000± per acre).

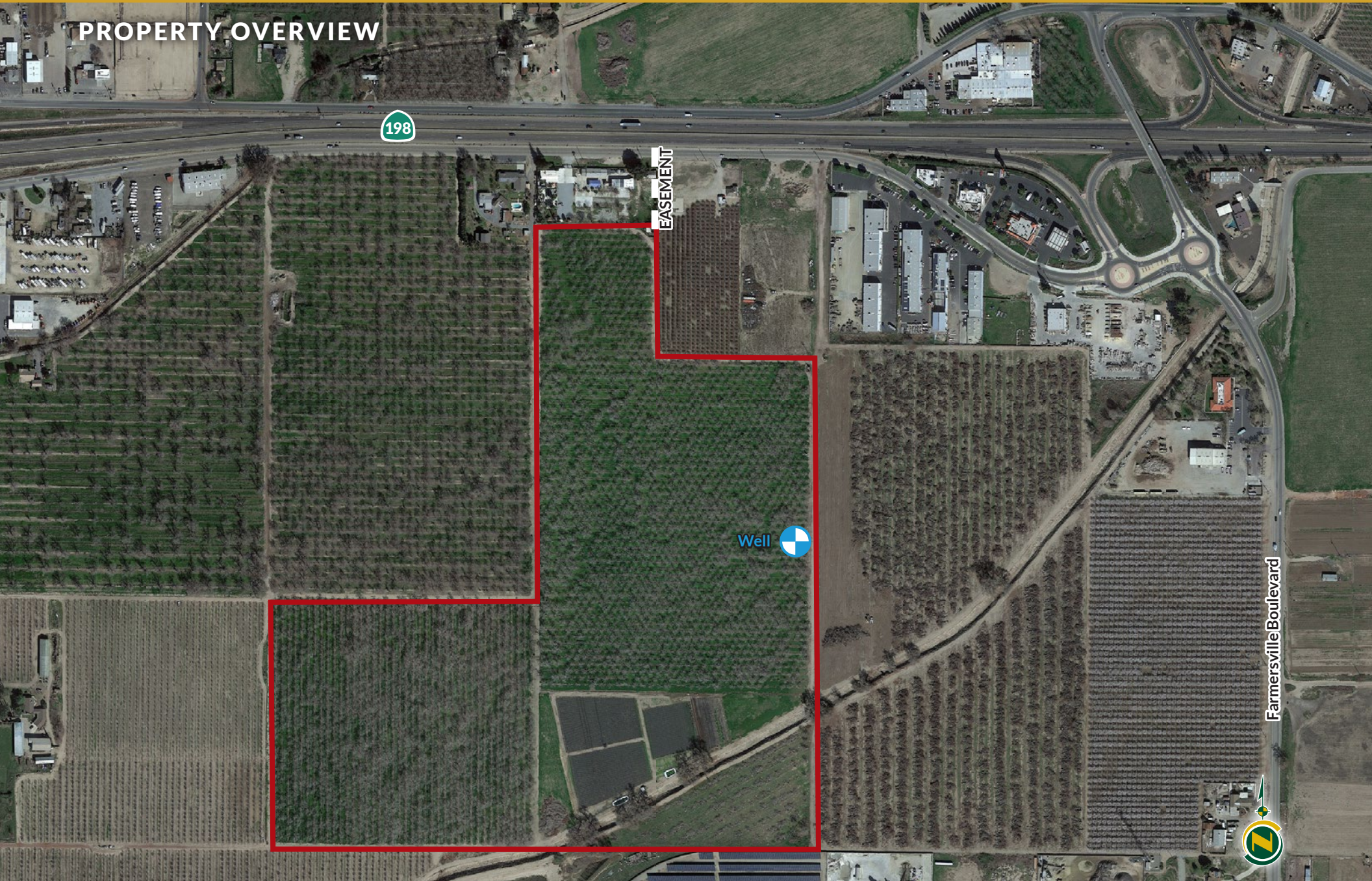


444 RANCH MATURE WALNUTS

67.16± Acres
Tulare County, CA



PROPERTY OVERVIEW

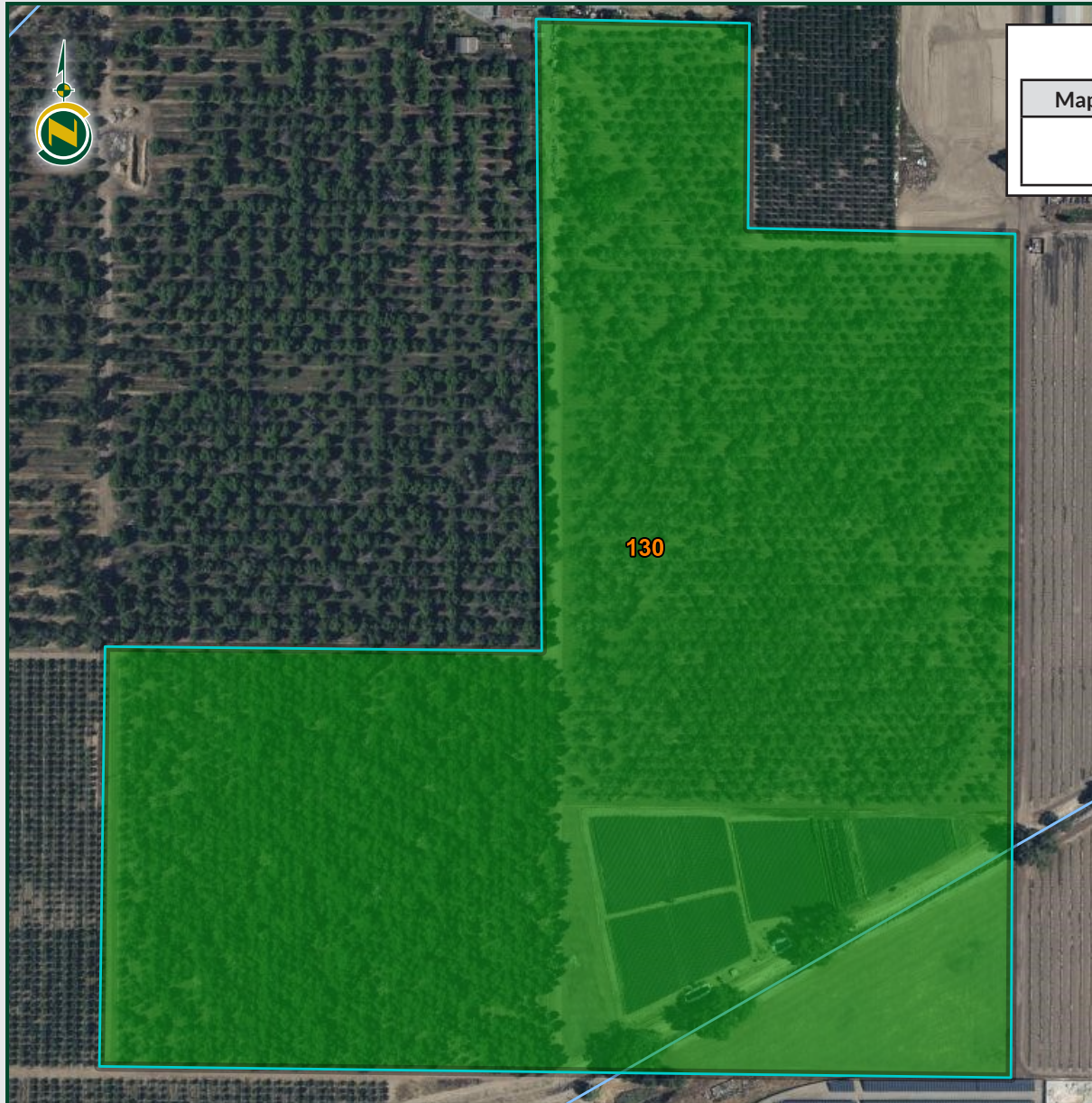


444 RANCH MATURE WALNUTS

67.16± Acres
Tulare County, CA



SOILS MAP



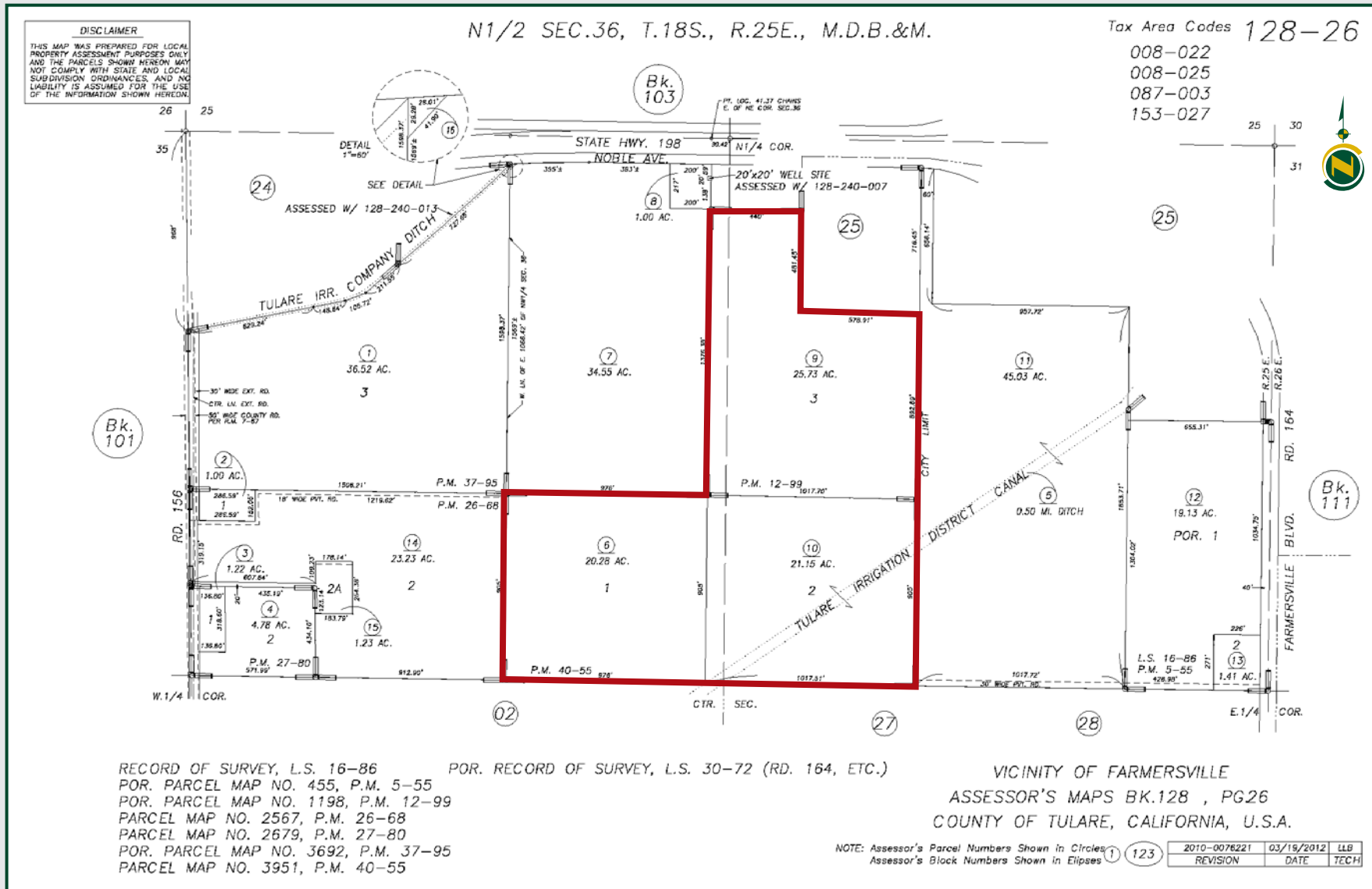
California Revised Storie Index (CA)		
Map Unit Symbol	Map Unit Name	Rating
130	Nord fine sandy loam, 0 to 2 percent slopes	Grade 1 - Excellent

444 RANCH MATURE WALNUTS

67.16± Acres
Tulare County, CA



PARCEL MAP



444 RANCH MATURE WALNUTS

67.16± Acres
Tulare County, CA



PROPERTY PHOTOS



444 RANCH MATURE WALNUTS

67.16± Acres
Tulare County, CA



Offices Serving The Central Valley

FRESNO

7480 N. Palm Ave, Ste 101
Fresno, CA 93711
559.432.6200

VISALIA

3447 S. Demaree Street
Visalia, CA 93277
559.732.7300

BAKERSFIELD

4900 California Ave., #210B
Bakersfield, CA 93309
661.334.2777



Download Our
Mobile App!

<http://pearsonrealty.com/mobileapp>



Water Disclosure: The Sustainable Groundwater Management Act (SGMA) was passed in 2014, requiring groundwater basins to be sustainable by 2040. SGMA requires a Groundwater Sustainability Plan (GSP) by 2020. SGMA may limit the amount of well water that may be pumped from underground aquifers. Buyers and tenants to a real estate transaction should consult with their own water attorney; hydrologist; geologist; civil engineer; or other

environmental professional. Additional information is available at: California Department of Water Resources Sustainable Groundwater Management Act Portal - <https://sgma.water.ca.gov/portal/> Telephone Number: (916) 653-5791 **Policy on cooperation: All real estate licensees are invited to offer this property to prospective buyers. Do not offer to other agents without prior approval.**