

13,466.58±
ASSESSED ACRES

WAWONA FARM CO. LLC
FRESNO & TULARE COUNTIES, CALIFORNIA

EXCLUSIVELY PRESENTED BY



FRESNO

7480 N. Palm Avenue, Suite 101
Fresno, CA 93711
559.432.6200

VISALIA

3447 S. Demaree Street
Visalia, CA 93277
559.732.7300

BAKERSFIELD

4900 California Avenue, Suite 210B
Bakersfield, CA 93309
661.334.2777

www.pearsonrealty.com

CA DRE #00020875



All information contained herein is deemed reliable but not guaranteed by seller nor broker and should be independently verified by potential buyers. We assume no liability for errors or omissions.

TABLE OF CONTENTS

PAGE

03	OFFERING SUMMARY
04	PROPOSED SALES PRICE
05	LAND GROUPS MAP OVERVIEW
06	LAND GROUP 1: <i>Golden Triangle</i>
18	LAND GROUP 2: <i>Fresno Irrigation District</i>
24	LAND GROUP 3: <i>Sanger River Bottom</i>
34	LAND GROUP 4: <i>Northeast Tulare County</i>
50	LAND GROUP 5: <i>Southeast Tulare County</i>
60	LAND GROUP 6: <i>West HWY 145 Ranch</i>
66	LAND GROUP 7: <i>Raisin City</i>

FRESNO

7480 N. Palm Ave, Ste 101
Fresno, CA 93711
559.432.6200

VISALIA

3447 S. Demaree St
Visalia, CA 93277
559.732.7300

BAKERSFIELD

4900 California Ave, Suite 210B
Bakersfield, CA 93309
661.334.2777

www.pearsonrealty.com

OFFERING SUMMARY

Pearson Realty is proud to present the largest solely owned grouping of fresh market stone fruit in the United States. With a large portion of the acreage in nectarines and peaches, the next owner will have an opportunity to secure a strong portion of this market in the San Joaquin Valley.

The portfolio is divided into seven (7) **Land Groups** based on location, soil, water profile, and pricing. The **Land Groups** encompass various irrigation districts, including but not limited to Fresno Irrigation District, Alta Irrigation District, Consolidated Irrigation District, Kings River Water District, Stone Corral Irrigation District, Kings County Water District, as well as certain ranches situated in groundwater-only zones. All the **Land Groups** have characteristics proven to be bountiful for treefruit and may also be suitable for other fresh fruit commodities, nut crops, and vegetables. Production history may be provided upon request. Some of the properties are certified organic. Along with the existing crops, several ranches within each **Land Group** may include homes, barns, shops, and other buildings.

*The **Land Groups** may be sold together or separately on a lease, lease-option, or straight sale basis. The 2024 crops are included in a sale or lease with reimbursement to the Seller for cultural costs incurred through the date of possession by the Tenant or Buyer.*

All information contained herein is deemed reliable but not guaranteed by seller nor broker and should be independently verified by potential buyers. We assume no liability for errors or omissions.



FRESNO
7480 N. Palm Ave, Ste 101
Fresno, CA 93711
559.432.6200

VISALIA
3447 S. Demaree St
Visalia, CA 93277
559.732.7300

BAKERSFIELD
4900 California Ave., #210B
Bakersfield, CA 93309
661.334.2777



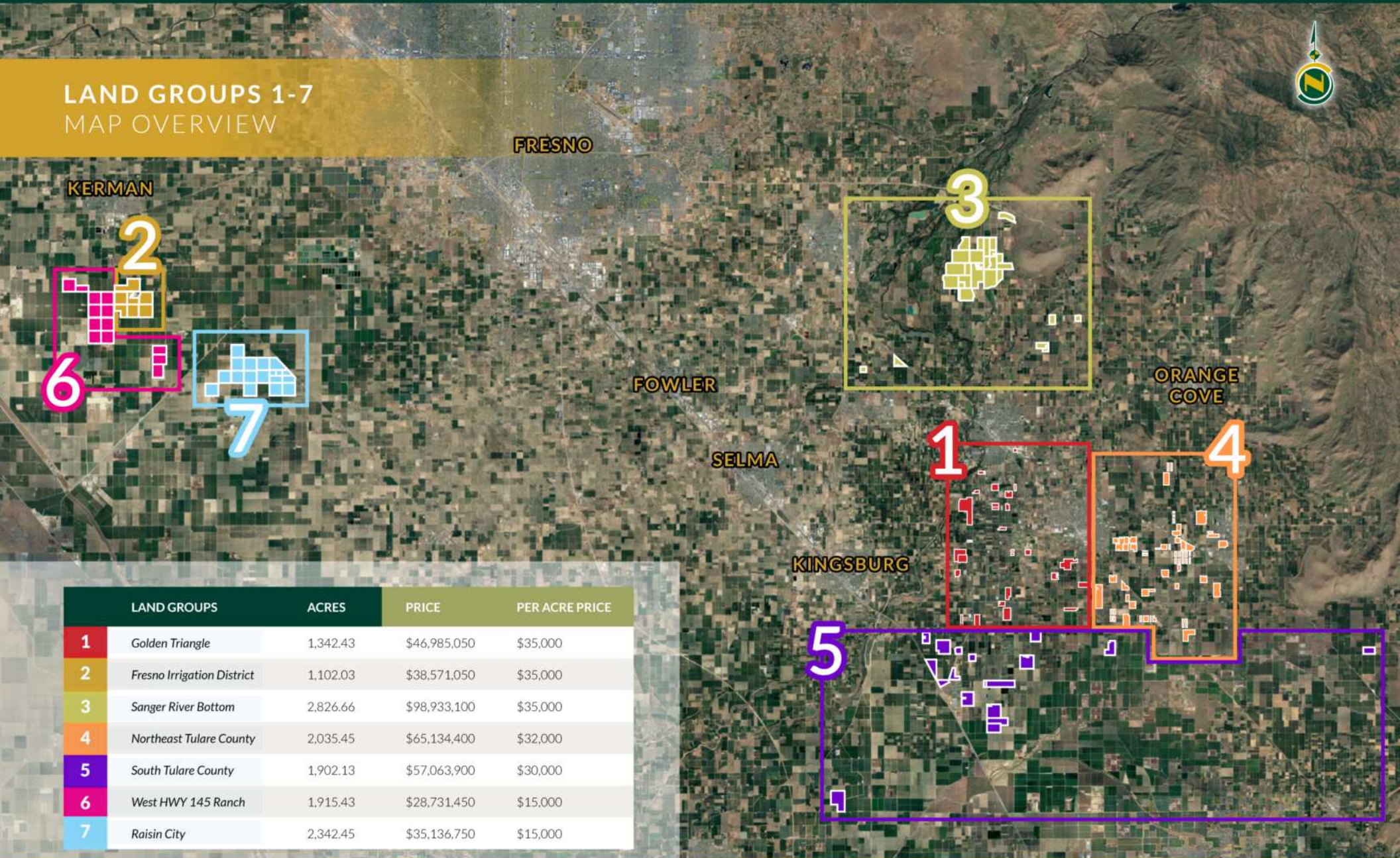
PROPOSED SALES PRICE

LAND GROUPS	ACRES	WATER INFO	PRICE	PER ACRE PRICE
1. Golden Triangle	1,342.43	Alta ID	\$46,985,050	\$35,000
2. Fresno Irrigation District	1,102.03	FID	\$38,571,050	\$35,000
3. Sanger River Bottom	2,826.66	Alta ID, KRWD, CID, & Church	\$98,933,100	\$35,000
4. Northeast Tulare County	2,035.45	Alta ID	\$65,134,400	\$32,000
5. Southeast Tulare County	1,902.13	Alta ID <i>(Not full entitlement)</i>	\$57,063,900	\$30,000
6. West HWY 145 Ranch	1,915.43	Groundwater Only	\$28,731,450	\$15,000
7. Raisin City	2,342.45	Groundwater Only	\$35,136,750	\$15,000
TOTAL	13,466.58			





LAND GROUPS 1-7 MAP OVERVIEW



LAND GROUPS	ACRES	PRICE	PER ACRE PRICE	
1	Golden Triangle	1,342.43	\$46,985,050	\$35,000
2	Fresno Irrigation District	1,102.03	\$38,571,050	\$35,000
3	Sanger River Bottom	2,826.66	\$98,933,100	\$35,000
4	Northeast Tulare County	2,035.45	\$65,134,400	\$32,000
5	South Tulare County	1,902.13	\$57,063,900	\$30,000
6	West HWY 145 Ranch	1,915.43	\$28,731,450	\$15,000
7	Raisin City	2,342.45	\$35,136,750	\$15,000

All information contained herein is deemed reliable but not guaranteed by seller nor broker and should be independently verified by potential buyers. We assume no liability for errors or omissions.



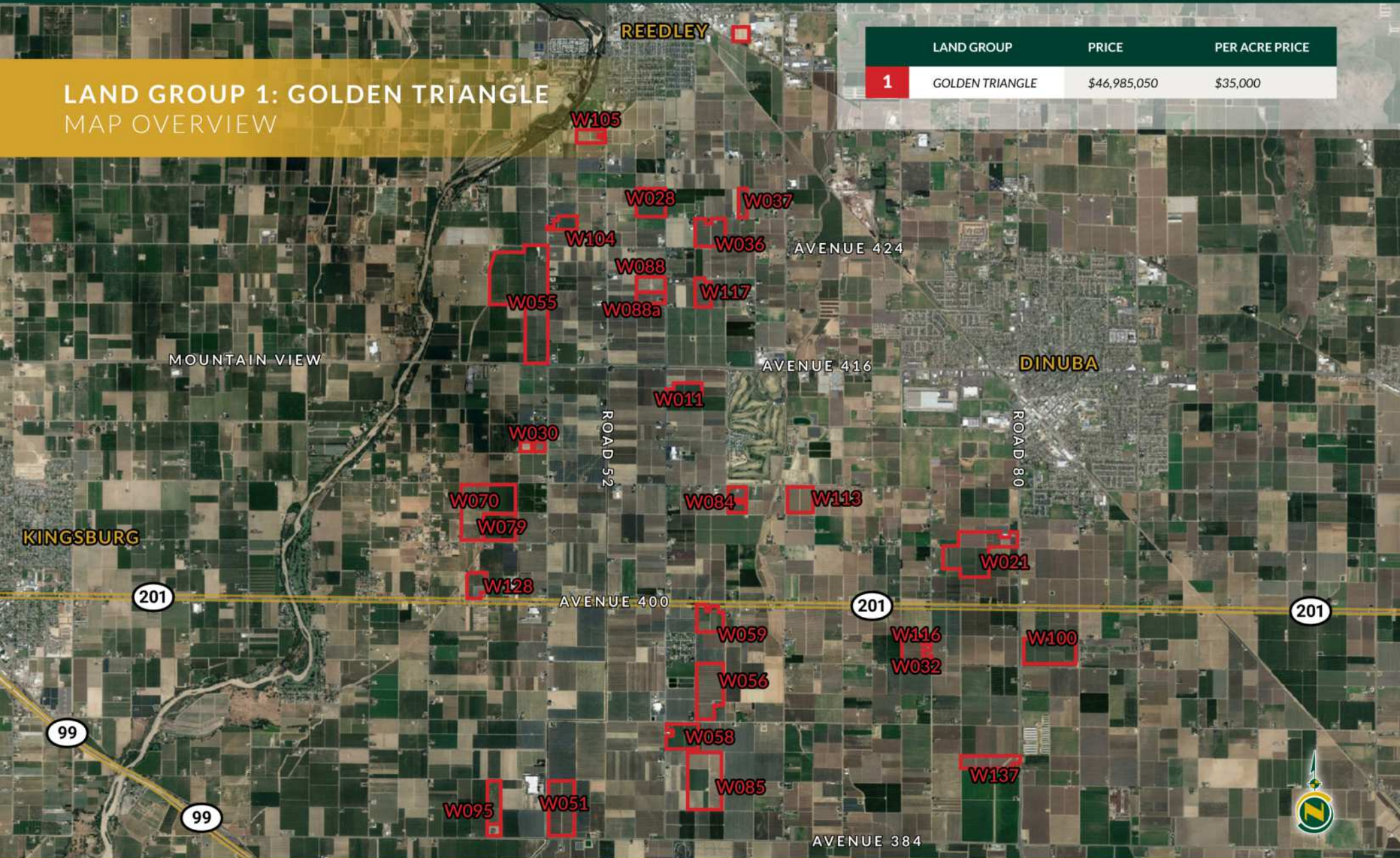
LAND GROUP 1

GOLDEN TRIANGLE



LAND GROUP 1: GOLDEN TRIANGLE
MAP OVERVIEW

LAND GROUP	PRICE	PER ACRE PRICE
1 GOLDEN TRIANGLE	\$46,985,050	\$35,000



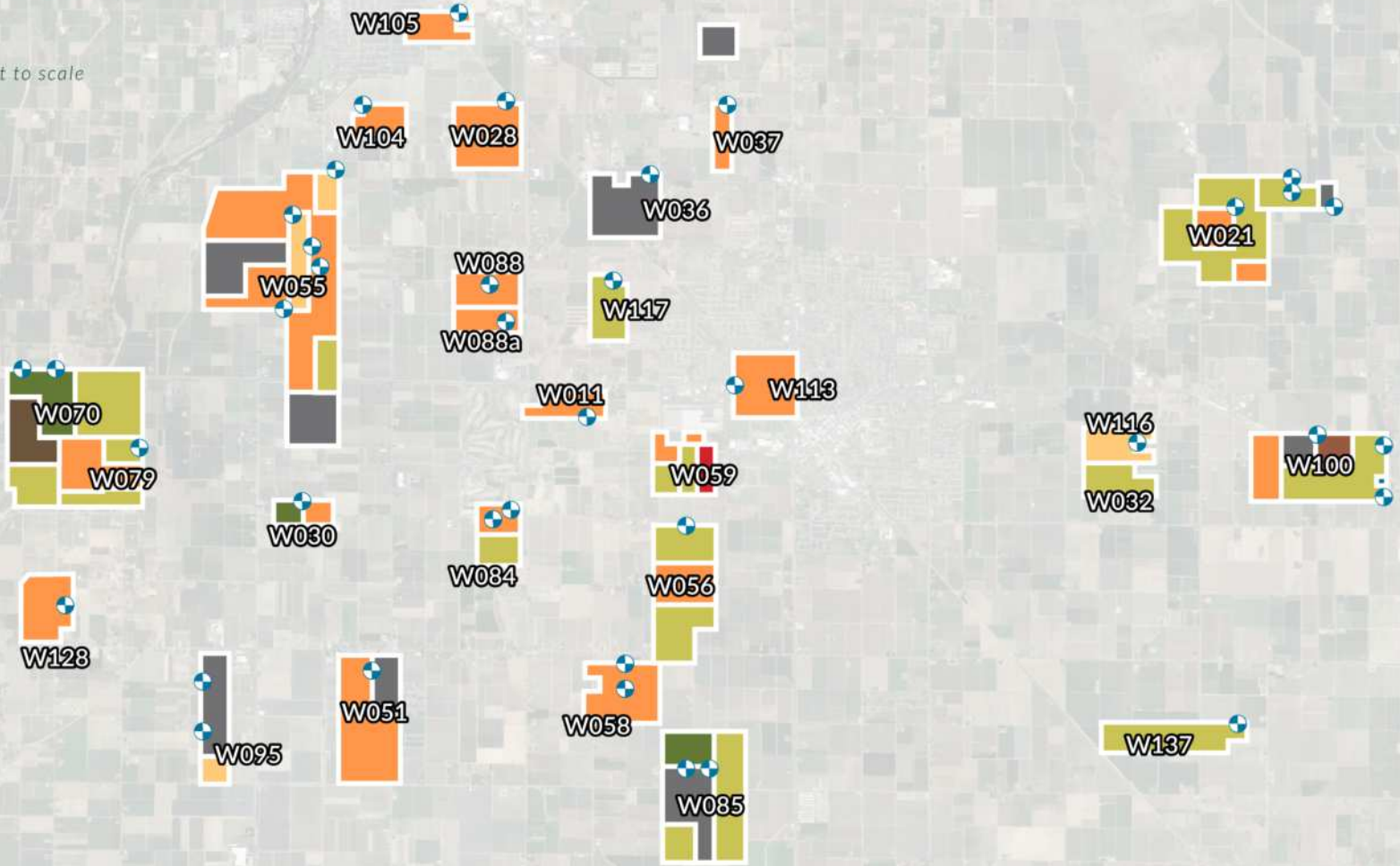
LAND GROUP 1: GOLDEN TRIANGLE CROP MAP*

**Subject lines are approximate, not to scale*

KEY

-  YOUNG PEACH
-  MATURE PEACH
-  YOUNG NECTARINE
-  MATURE NECTARINE
-  YOUNG PLUM
-  MATURE PLUM
-  OPEN LAND
-  APRICOT
-  PUMP & WELL

*YOUNG = 2020 OR YOUNGER



LAND GROUP 1 - GOLDEN TRIANGLE								
RANCH #	FARMABLE ACRES	ASSESSED ACRES	PLANT DATE	CROP	VARIETY	DISTRICT	APN	WELL(s)
W011						AID	012-230-053	(1) 20HP Submersible
A*	7.2		2010	Yellow Peach	Spring Flame 22	AID		
B*	9		2010	Yellow Peach	Spring Flame 22	AID		
TOTALS	16.2	17.79						(1) WELL
W021						AID	030-010-046	(1) 50HP Turbine, (1) 15HP Turbine, & (2) 10HP Turbine
A	9.53		2022	White Nectarine	Polar Gem	AID		
B	15.73		2015	White Nectarine	Polar Gem	AID		
C	3		2020	White Nectarine	Polar Gem	AID		
D	3.2			Open Land		AID	030-010-042	
F1*	9.5		2015	White Nectarine	Polar Gem	AID	030-020-033	
F2a*	6.45		2015	Yellow Peach	Summer Flame 36	AID	030-020-005	
F2b*	3.5		2006	Yellow Peach	Summer Flame 36	AID		
F4*	2.25		2004	White Peach	Snow Jem	AID		
F5a*	2.25		2015	Yellow Nectarine	August Fire	AID		
F5b*	3		2008	Yellow Nectarine	August Fire	AID		
F5c*	3.25		2001	Yellow Nectarine	August Fire	AID		
G1*	11.25		2015	Yellow Nectarine	August Bright	AID		
G2*	3.25		2004	White Nectarine	Polar Light	AID		
G3a*	1.1		2015	Yellow Peach	Su Peach 17	AID		
G3b*	3.5		2013	Yellow Peach	Su Peach 17	AID		
TOTALS	80.76	84.72						(4) WELLS
W028						AID	012-140-008	(1) 15HP Turbine
A	14.1		2010	Yellow Peach	Prima Peach 14	AID		
B*	23.6		2016	Yellow Peach	Summer Flame 29	AID		
TOTALS	37.7	39.01						(1) WELL

NOTE: * = CERTIFIED ORGANIC



LAND GROUP 1 - GOLDEN TRIANGLE

RANCH #	FARMABLE ACRES	ASSESSED ACRES	PLANT DATE	CROP	VARIETY	DISTRICT	APN	WELL(s)
W030						AID	012-120-012	(1) 20HP Submersible
A1	8.5		2020	Yellow Nectarine	Honey May	AID		
A2	7.47		2013	Yellow Peach	Spring Flame 22	AID		
TOTALS	15.97	16.96						(1) WELL
W032						AID	030-030-007	(1) 15HP Submersible
A*	17.5		2020	Yellow Peach	May Princess	AID		
TOTALS	17.5	18						
W036						AID	012-200-048 012-200-049	(1) 40HP Turbine
A	17.5			Open Land		AID		
B	17.2			Open Land		AID		
TOTALS	34.7	38.37						
W037						AID	012-200-005	(1) 20HP Submersible
A*	9.04		2010	Yellow Peach	June Time	AID		
TOTALS	9.04	9.85						
W051						AID	029-110-013	(1) 50HP Submersible
A	17.62		2008	Yellow Peach	Summer Flame 29	AID		
B	18.57			Open Land		AID		
C	17.88		2008	Yellow Peach	Sierra Rich	AID		
D	17.77		2008	Yellow Peach	Summer Flame 34	AID		
TOTALS	71.84	78.36						

NOTE: * = CERTIFIED ORGANIC



LAND GROUP 1 - GOLDEN TRIANGLE

RANCH #	FARMABLE ACRES	ASSESSED ACRES	PLANT DATE	CROP	VARIETY	DISTRICT	APN	WELL(s)
W055*						AID	012-050-011, 012-060-007, 012-050-005, 012-050-006, 012-050-007, 012-050-010, 012-050-009 & 012-050-008	(2) 50HP Submersible & (2) 15HP Submersible
A1a*	11.05		2016	Yellow Peach	Su Peach 15	AID		
A1b*	8		2016	Yellow Peach	Su Peach 15	AID		
A2	11.68		2022	Yellow Peach	August Flame	AID		
A3*	21.88		2010	Yellow Peach	Grand Finale	AID		
A4a	3.68		2022	Yellow Peach	August Flame	AID		
A4b	3.02		2022	Yellow Peach	August Flame	AID		
A4c	21.21		2022	Yellow Peach	August Flame	AID		
A5	18.96		2013	White Peach	Late White Delight	AID		
A6a	18.66			Open Land		AID		
A6b	8.77			Open Land		AID		
A8*	9.72		2014	Yellow Peach	Su Peach 21	AID		
A9a	9.53		2018	White Peach	178LX528	AID		
A9b	9.47		2018	White Peach	178LX528	AID		
B3	11.06		2009	Yellow Nectarine	Prince Jim	AID		
B4	24.82			Open Land		AID	012-060-015	
TOTALS	191.51	206.29						(4) WELLS
W056						AID	029-220-009	(1) 50HP Submersible
A1a	16.31		2009	Yellow Nectarine	Honey Lite	AID		
A1b	6.79		2009	Yellow Nectarine	Honey Lite	AID		
A1c	15.08		2011	Yellow Nectarine	Honey Lite	AID		
A2a	21		2006	Yellow Peach	Summer Flame 34	AID		
A2b	5.27		1999	Yellow Peach	Summer Flame 34	AID		
TOTALS	64.45	70						(1) WELL

NOTE: * = CERTIFIED ORGANIC



LAND GROUP 1 - GOLDEN TRIANGLE

RANCH #	FARMABLE ACRES	ASSESSED ACRES	PLANT DATE	CROP	VARIETY	DISTRICT	APN	WELL(s)
W058						AID		(1) 50HP Submersible
A1*	16.02		2014	Yellow Peach	Spring Flame 20.5	AID	029-230-027	
A2a*	3.23		2008	Yellow Peach	Henry III	AID		
A2b*	3.3		2014	Yellow Peach	Henry III	AID		
A2c*	7.79		2013	Yellow Peach	Henry III	AID	029-230-011	
B1a*	3.59		2014	Yellow Peach	Summer Flame 26	AID		
B1b*	8.44		2013	Yellow Peach	Summer Flame 26	AID		
TOTALS	42.37	45.4						
W059						AID		(2) 15HP Submersible
A1a*	2.5		2007	White Peach	Summer Sweet	AID	029-170-025	
A1b*	2.5		2011	White Peach	Summer Sweet	AID		
A1c*	1.5		2008	White Peach	Summer Sweet	AID		
A4*	3		2011	Yellow Nectarine	Honey Royale	AID		
A5*	8.3		2019	Yellow Nectarine	Honeylicious	AID		
B1*	2.6		2004	Yellow Peach	July Flame	AID		
B2a*	3.3		2011	Yellow Nectarine	Honeylicious	AID	029-170-041	
B2b*	3.3		2015	Yellow Nectarine	Honeylicious	AID		
B4	4.81		2022	Rootstock	Nemaguard	AID		
B5	3.21		2022	Rootstock	Nemaguard	AID		
TOTALS	35.02	35.98						(2) WELLS

NOTE: * = CERTIFIED ORGANIC



LAND GROUP 1 - GOLDEN TRIANGLE

RANCH #	FARMABLE ACRES	ASSESSED ACRES	PLANT DATE	CROP	VARIETY	DISTRICT	APN	WELL(s)
W070 *						AID	029-010-033, 029-010-002, 029-010-003, 029-010-015 & 029-010-016	(1) 15HP Submersible & (1) 20HP Submersible
A1*	25.8		2020	Yellow Nectarine	Honey Lite	AID		
A3*	23.5		2020	Black Plum	Su Plum 57	AID		
B1*	9.6		2006	Yellow Nectarine	Honey Fire	AID		
B2*	6		2007	Yellow Nectarine	Honey Royale	AID		
B3a*	3.5		2007	Yellow Nectarine	Red Glenn	AID		
B3b*	3.5		2007	Yellow Nectarine	Red Glenn	AID		
B5*	9.4		2006	Yellow Nectarine	Summer Flare 27	AID		
B6*	6		2007	Yellow Nectarine	August Red	AID		
C	15.8		2018	Yellow Nectarine	Sweet Flare 29	AID		
TOTALS	103.1	107.34						(2) WELLS
W079						AID	029-010-017 & 029-010-013	(1) 50HP Turbine
A1a	7		2010	Yellow Peach	Grand Finale	AID		
A1b	6.75		2010	Yellow Peach	Grand Finale	AID		
A2	13.99		2008	Yellow Peach	Princess Time	AID		
A3	4.3		2018	Yellow Nectarine	Sweet Flare 29	AID		
B1	10		2018	Yellow Nectarine	Sweet Flare 30	AID		
B3	6.3		2005	White Nectarine	Candy Pearl	AID		
TOTALS	48.34	48.5						(1) WELL
W084						AID	029-130-005	(1) 10HP Turbine & (1) Turbine 700GPM new well site being installed
A	13.4		2005	White Peach	Ice Princess	AID		
B*	14.4		2014	Yellow Nectarine	September Bright	AID		
TOTALS	27.8	30						(2) WELLS

NOTE: * = CERTIFIED ORGANIC



LAND GROUP 1 - GOLDEN TRIANGLE

RANCH #	FARMABLE ACRES	ASSESSED ACRES	PLANT DATE	CROP	VARIETY	DISTRICT	APN	WELL(s)
W085						AID	029-230-021, 029-260-017, 029-230-017 & 029-260-015	(1) 25HP Submersible & (1) 40HP Submersible
A1	20		2019	Yellow Nectarine	August Bright	AID		
A2	20		2019	Yellow Nectarine	Prince Jim	AID		
B1	19		2020	Yellow Nectarine	September Bright	AID		
C1	7.92			Open Land		AID		
C2	5.28			Open Land		AID		
C3	5.28			Open Land		AID		
C4	3.52			Open Land		AID		
C5	5			Open Land		AID		
D	15		2019	Yellow Nectarine	August Fire	AID		
TOTALS	101	104.09						(2) WELLS
W088						AID	012-150-007 & 012-150-008	(1) 20HP Turbine
B	18.92		2019	White Peach	Sierra Snow	AID		
TOTALS	18.92	19.3						
W088A						AID	012-150-036	(1) 10HP Turbine
A	17		2016	Yellow Peach	Spring Flame 22	AID		
TOTALS	17	18.22						
W095						AID	029-120-019	(1) 40HP Turbine & (1) 30HP Turbine
A1	9.25			Open Land		AID		
A2	9.25			Open Land		AID		
A3	9.64			Open Land		AID		
B2	7.47		2020	Yellow Peach	Rich Lady	AID		
TOTALS	35.61	38.09						

NOTE: * = CERTIFIED ORGANIC



LAND GROUP 1 - GOLDEN TRIANGLE								
RANCH #	FARMABLE ACRES	ASSESSED ACRES	PLANT DATE	CROP	VARIETY	DISTRICT	APN	WELL(s)
W100*						AID	030-100-032	(1) 20HP Turbine & (1) 50HP Turbine
A1	7			Open Land		AID		
A2*	13.67		2007	Yellow Nectarine	Honey Royale	AID		
A3*	9.7		2011	Black Plum	Su Plum 41	AID		
A4*	9.67		2011	White Nectarine	Majestic Pearl	AID		
A5*	18.75		2016	Yellow Peach	Summer Flame 26	AID		
A6*	13.76		2019	Yellow Nectarine	Zee Fire	AID		
TOTALS	72.55	76.97						(2) WELLS
W104						AID	012-140-040	(1) 15HP Submersible
A1	2.5		2019	Yellow Peach	Prima Peach 14	AID		
A2	12.5		2019	Yellow Peach	Prima Peach 14	AID		
TOTALS	15	16.63						(1) WELL
W105						AID	012-130-046	(1) 15HP Submersible
A*	13.9		2019	Yellow Peach	Summer Flame 29	AID		
TOTALS	13.9	17.88						(1) WELL
W113*						AID	029-140-001	(1) 50HP Turbine
A1	17		2014	Yellow Peach	Su Peach 21	AID		
A2	18.29		2014	White Peach	Su Peach 21	AID		
TOTALS	35.29	37.3						(1) WELL

NOTE: * = CERTIFIED ORGANIC



LAND GROUP 1 - GOLDEN TRIANGLE

RANCH #	FARMABLE ACRES	ASSESSED ACRES	PLANT DATE	CROP	VARIETY	DISTRICT	APN	WELL(s)
W116*						AID	030-030-018	(1) 10HP Submersible
A	17.25		2021	Yellow Peach	Su Peach 26	AID		
TOTALS	17.25	18.7						
W117						AID	012-212-014	(1) 5HP Submersible
A	18.11		2015	White Nectarine	Polar Zee	AID		
TOTALS	18.11	18.3						
W128						AID	029-280-005 029-280-006	(1) 15HP Submersible
A	9.28		2016	Yellow Peach	August Flame	AID		
B	7.08		2017	Yellow Peach	June Time	AID		
C	9.38		2016	Yellow Peach	Summer Flame 26	AID		
TOTALS	25.74	27.95						(1) WELL
W137						AID	030-050-025	(1) 30HP Turbine
A1	27.9		2011	Yellow Nectarine	Honey Lite	AID		
A2	3.55		2011	Yellow Nectarine	Honey Lite	AID		
TOTALS	31.45	37.55						(1) WELL
PLANT 2		9.96					370-070-85 (Fresno County)	
				Industrial				
TOTALS		9.96						

NOTE: * = CERTIFIED ORGANIC





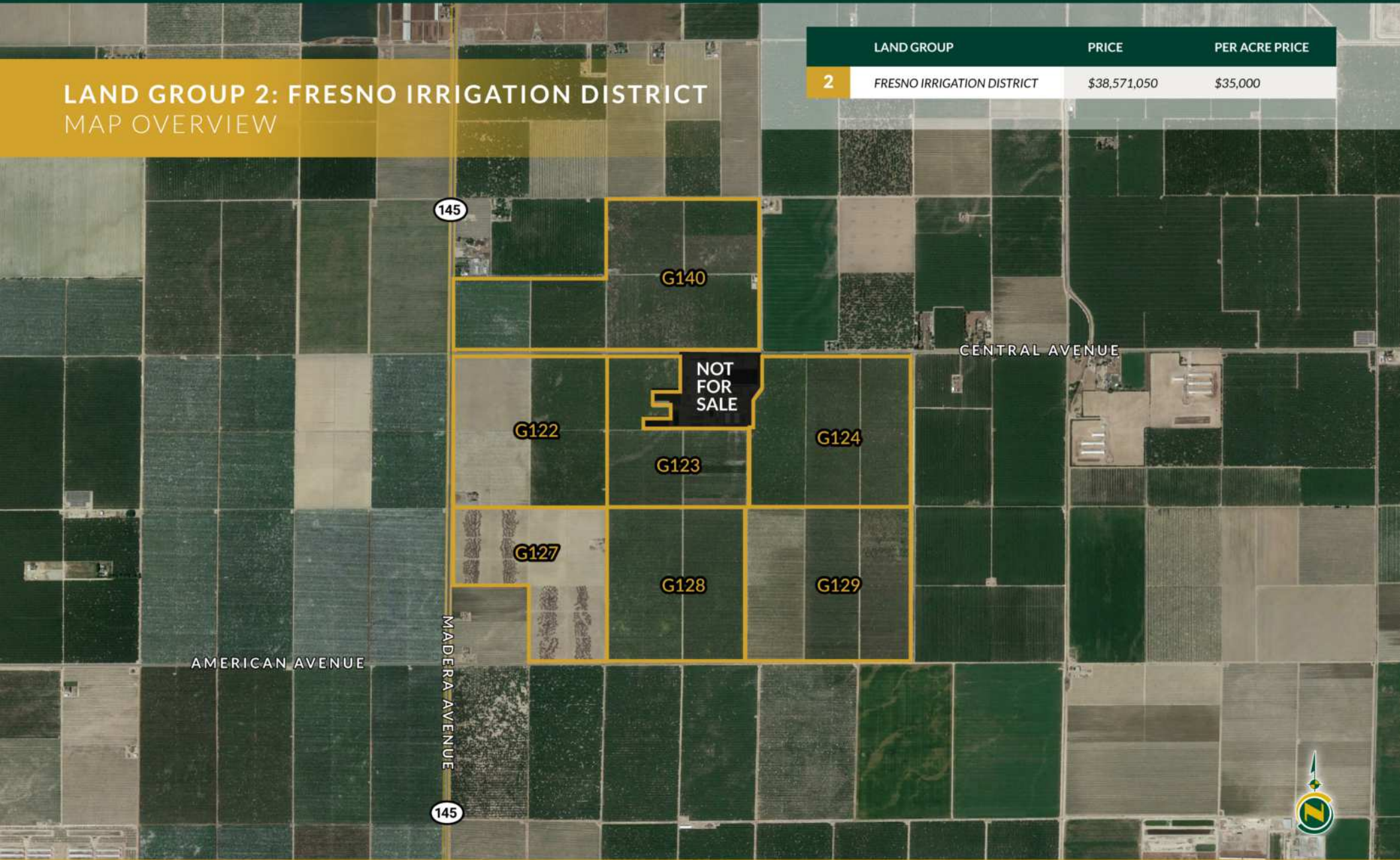
LAND GROUP 2

FRESNO IRRIGATION DISTRICT



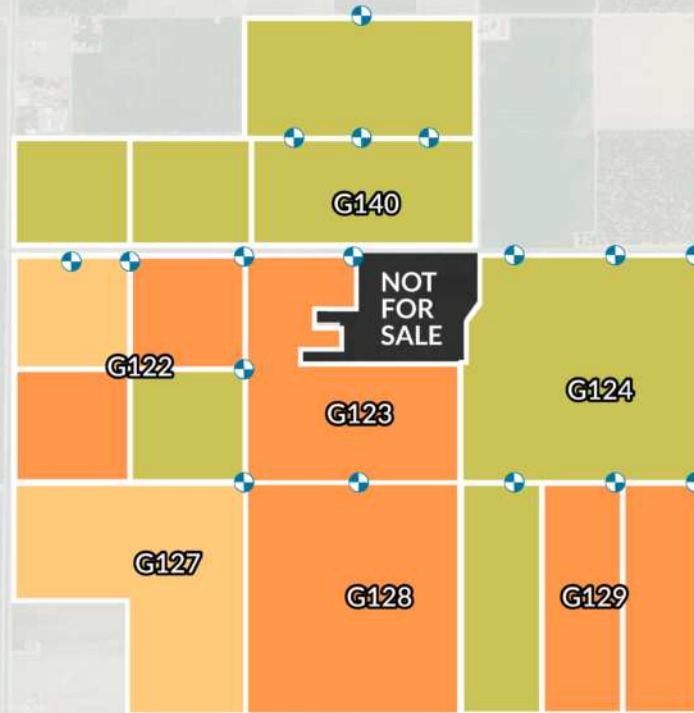
LAND GROUP 2: FRESNO IRRIGATION DISTRICT MAP OVERVIEW

LAND GROUP	PRICE	PER ACRE PRICE
2 FRESNO IRRIGATION DISTRICT	\$38,571,050	\$35,000






LAND GROUP 2: FRESNO IRRIGATION DISTRICT CROP MAP*

**Subject lines are approximate, not to scale.*



KEY

-  YOUNG PEACH
-  MATURE PEACH
-  MATURE NECTARINE

*YOUNG = 2020 OR YOUNGER



LAND GROUP 2: FRESNO IRRIGATION DISTRICT - BREAKDOWN								
RANCH #	FARMABLE ACRES	ASSESSED ACRES	PLANT DATE	CROP	VARIETY	DISTRICT	APN	WELL(s)
G122, 123, 124, 127, 128 & 129						FID	025-050-94s, 025-050-82, 025-050-30s, 025-250-17s, 025-250-19, & 025-250-05	(7) 75HP Turbine (1) 100HP Turbine (1) 50HP Turbine (2) 40HP Turbine & (1) 30HP Turbine
G122A	38.86		2020	Peach	Summer Flame 34	FID		
G122B	38.4		2006	Peach	Prima Gattie 10	FID		
G122C	36.58		2019	Peach	Summer Flame 34	FID		
G122D	38.5		2006	Nectarine	Prima Diamond 24	FID		
G123A	31.61		2006	Peach	Prima Gattie 10	FID		
G123C	39.21		2016	Nectarine	Prima Diamond 19	FID		
G123D	33		2022	Nectarine	Prima Diamond 19	FID		
G124A	54.95		2007	Nectarine	Prima Diamond 10	FID		
G124B	54.29		2007	Peach	Prima Peach 23	FID		
G124C	53.44		2007	Peach	Prima Peach 23	FID		
G127A	39.7		2022	Peach	Prima Gattie 08	FID		
G127B	37.81		2021	Peach	Prima Gattie 08	FID		
G127C	40.03		2022	Peach	Prima Gattie 08	FID		
G128A	78.67		2016	Peach	Prima Gattie 08	FID		
G128B	65.9		2016	Nectarine	Prima Diamond 24	FID		
G129A	59.4		2019	Nectarine	August Fire	FID		
G129B	56.55		2015	Peach	Prima Peach 17	FID		
G129C1	20.36		2015	Peach	Prima Peach 18	FID		
G129C2	34.06		2015	Peach	Prima Peach 18	FID		
TOTALS	851.32	862.3						(12) WELLS

NOTE: * = CERTIFIED ORGANIC



LAND GROUP 2: FRESNO IRRIGATION DISTRICT - BREAKDOWN								
RANCH #	FARMABLE ACRES	ASSESSED ACRES	PLANT DATE	CROP	VARIETY	DISTRICT	APN	WELL(s)
G140						FID	025-050-80S	(2) 50HP Turbine, (1) 75HP Turbine & (1) 60HP Turbine
G140A	38.75		2010	Peach	Prima Peach 18	FID		
G140B1	18.83		2010	White Peach	Summer Sweet	FID		
G140B2	18.83		2010	White Peach	Snow Giant	FID		
G140C	38.52		2010	Peach	May Princess	FID		
G140D	37.8		2010	Nectarine	Prima Diamond 11	FID		
G140H1	16.67		2010	White Nectarine	Majestic Pearl	FID		
G140H2	29.05		2010	White Nectarine	Majestic Pearl	FID		
G140H3	16.14		2010	White Nectarine	Artic Pride	FID		
G140H4	15.87		2010	White Nectarine	Snow Pearl	FID		
TOTALS	230.46	239.73						(4) WELLS

NOTE: * = CERTIFIED ORGANIC





LAND GROUP 3

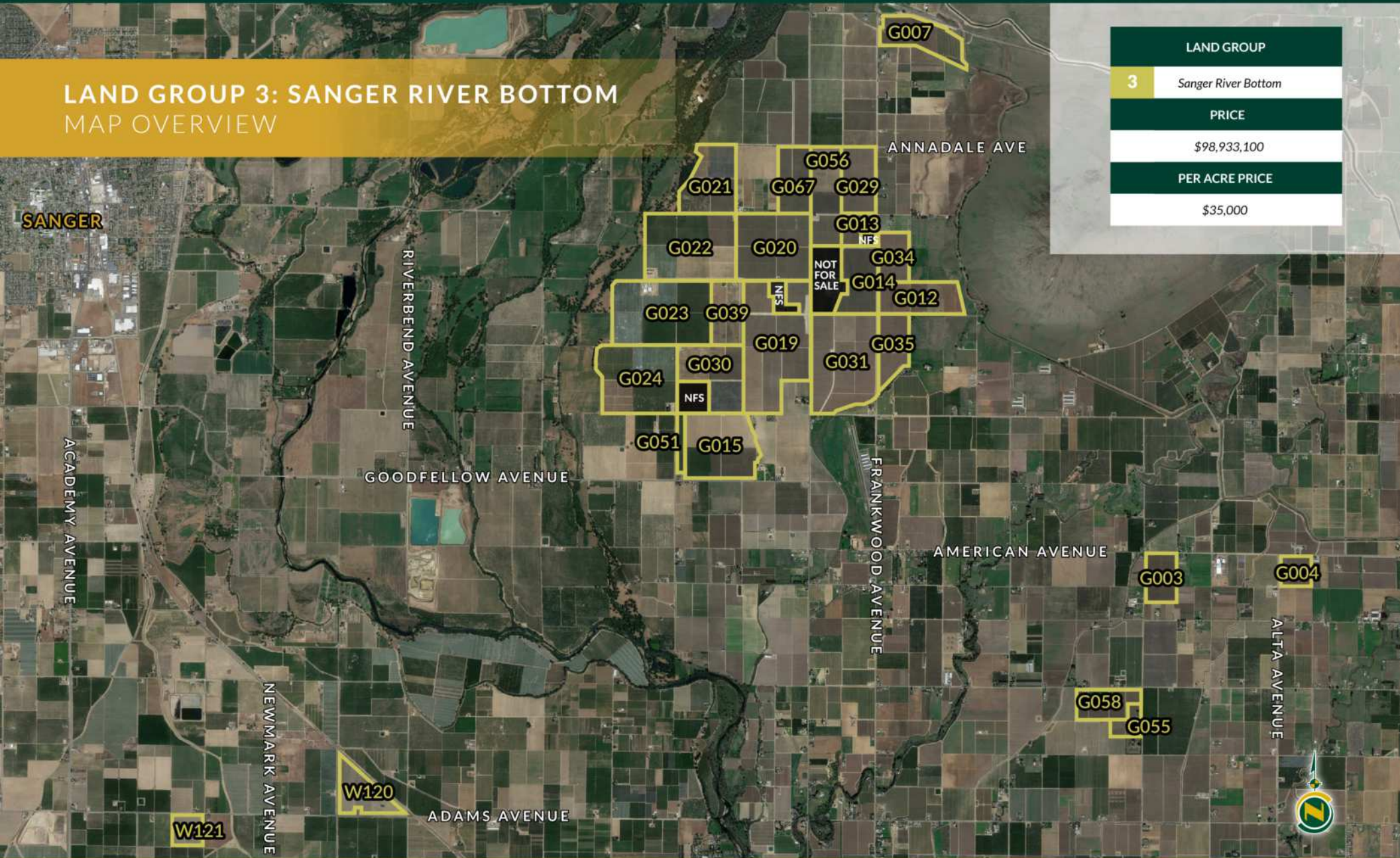
SANGER RIVER BOTTOM





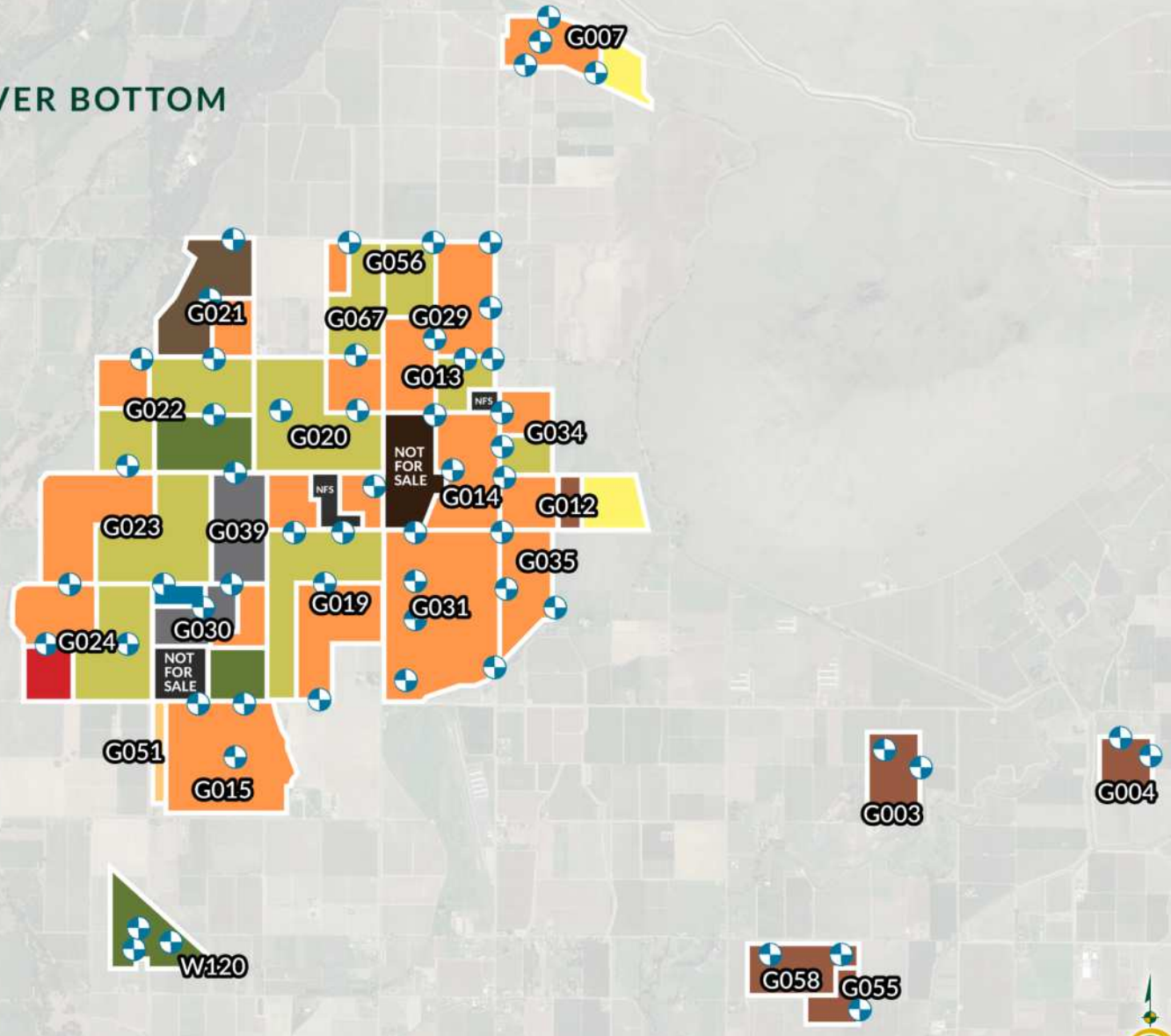
LAND GROUP 3: SANGER RIVER BOTTOM MAP OVERVIEW

LAND GROUP	
3	Sanger River Bottom
PRICE	
\$98,933,100	
PER ACRE PRICE	
\$35,000	



LAND GROUP 3: SANGER RIVER BOTTOM CROP MAP*

*Subject lines are approximate, not to scale



- KEY**
- MATURE PEACH
 - YOUNG NECTARINE
 - MATURE NECTARINE
 - YOUNG PLUM
 - MATURE PLUM
 - TANGO MANDARIN
 - OPEN LAND
 - ROOTSTOCK
 - RESERVOIR
 - ⊕ PUMP & WELL

*YOUNG = 2020 OR YOUNGER



LAND GROUP 3: SANGER RIVER BOTTOM								
RANCH #	FARMABLE ACRES	ASSESSED ACRES	PLANT DATE	CROP	VARIETY	DISTRICT	APN	WELL(s)
W120 (KOZI 1)						CID	360-050-44, 360-050-46, 360-050-47, & 360-050-08	(2) 40HP Turbine & (1) 10HP Submersible
W120A	49.9		2020	Nectarine	September Bright	CID		
W120B1	19		2016	Nectarine	September Bright	CID		
TOTALS	68.9	75.36						(3) WELLS
W121 (KOZI 2)						CID	353-040-04	(1) 15HP Submersible
W121A	16.37		2020	White Nectarine	Majestic Pearl	CID		
W121B	19.47		2020	White Nectarine	Snow Pearl	CID		
TOTALS	35.84	39						
G058						AID	360-071-09	(1) 40 HP Submersible & (1) 15HP Submersible
G058A1	5.95		1999	Plum	Black Amber	AID		
G058A2	0.3		1999	Plum	Owen T	AID		
G058A3	6.12		1999	Plum	Owen T	AID		
G058B1	10.76			Open Land		AID		
G058B2	6.01		1999	Plum	Owen T	AID		
G058B3	6.01		1999	Plum	Black Amber	AID		
G058C	18.19		1999	Plum	Owen T	AID		
G058D	8.74		2011	Plum	Friar	AID		
TOTALS	62.08	69.35						
G055						AID	360-071-08	(1) 20HP Turbine
G055A	7.86		2011	Plum	Friar	AID		
G055B1	4.11		2011	Plum	Friar	AID		
G055B2	5.02		2011	Plum	Friar	AID		
G055C	8.95		2011	Plum	Friar	AID		
TOTALS	25.94	30.19						

NOTE: * = CERTIFIED ORGANIC



LAND GROUP 3: SANGER RIVER BOTTOM								
RANCH #	FARMABLE ACRES	ASSESSED ACRES	PLANT DATE	CROP	VARIETY	DISTRICT	APN	WELL(s)
G003						AID	373-020-61S	(1) 20HP Submersible & (1) 30HP Submersible
G003A	55.85		1997	Plum	Owen T	AID		
TOTALS	55.85	57.7						
G004						AID	373-020-83	(2) 15HP Turbine
G004A	36.17		2011	Plum	Friar	AID		
TOTALS	36.17	39.42						(2) WELLS
G007						AID	333-100-56 & 333-100-38s	(1) 10HP Submersible & (3) 20HP Submersible
G007A	62.99		2013	Peach	Prima Gattie 08	AID		
G007B	21.87		2016	Mandarin	Tango Seedless	AID		
TOTALS	84.86	89.59						
G015 & G051						KRWD	333-181-06S	(1) 25HP Turbine, (1) 20HP Turbine & (1) 60HP Turbine
G015A	38.68		2021	Peach	Prima Peach 14	KRWD		
G015B	33.97		2021	Peach	Prima Peach 14	KRWD		
G015C	39.24		2007	Peach	Prima Gattie 8	KRWD		
G015D	39.32		2007	Peach	Prima Gattie 8	KRWD		
G051A	11.48		2014	Peach	Prima Gattie 10	KRWD		
G051B	9.66		2014	Peach	Prima Gattie 10	KRWD		
TOTALS	172.35	183.16					(3) WELLS	
G021						KRWD	333-090-06S	(2) 50HP Turbine
G021A	44.89		2022	Plum	Owen T	KRWD		
G021B	35.5		2022	Plum	Owen T	KRWD		
G021C	30.56		2007	Peach	Prima Gattie 8	KRWD		
TOTALS	110.95	117.06						

NOTE: * = CERTIFIED ORGANIC



LAND GROUP 3: SANGER RIVER BOTTOM								
RANCH #	FARMABLE ACRES	ASSESSED ACRES	PLANT DATE	CROP	VARIETY	DISTRICT	APN	WELL(s)
G030						KRWD	333-130-15 & 333-130-17s	(1) 5HP Turbine & (1) 40HP Turbine
G030A1	18			Recharge Pond		KRWD		
G030A2	18			Open Land		KRWD		
G030B1	14.22			Open Land		KRWD		
G030B2	23.78		2007	Peach	Prima Gattie 08	KRWD		
G030C	34.92		2022	Nectarine	Prima Gattie 19	KRWD		
TOTALS	108.92	118.62						(2) WELLS
G039						KRWD	333-130-45	
G039A	18			Open Land		KRWD		
G039B	36.26			Open Land		KRWD		
G039C	18.81			Open Land		KRWD		
TOTALS	73.07	78.93						
G013						AID	333-090-11	(1) 15HP Turbine & (1) 5.7HP Turbine
G013A	27.25		2008	Nectarine	Prima Diamond 19	AID		
TOTALS	27.25	31.81						(2) WELLS
G014						AID	333-090-28 333-130-33	(1) 40HP Turbine & (1) 30HP Turbine
G014A	38.14		2012	Peach	Prima Gattie 08	AID		
G014B	40.56		2006	Peach	Prima Gattie 08	AID		
TOTALS	78.7	85.22						(2) WELLS
G029						AID	333-090-10S	(1) 15HP Turbine & (1) 50HP Turbine
G029A	37.34		2015	Peach	Prima Peach 15	AID		
G029B	37.75		2009	Peach	Prima Peach 27	AID		
TOTALS	75.09	87.14						(2) WELLS

NOTE: * = CERTIFIED ORGANIC



LAND GROUP 3: SANGER RIVER BOTTOM								
RANCH #	FARMABLE ACRES	ASSESSED ACRES	PLANT DATE	CROP	VARIETY	DISTRICT	APN	WELL(s)
G031						AID	333-130-29, & 333-130-28	(2) 25HP Turbine, & (3) 50HP Turbine
G031A1	70.51		2013	Peach	Prima Peach 20	AID		
G031A2	22.38		2013	Peach	Prima Peach 20	AID		
G031B	18.82		2017	Peach	Prima Peach 23	AID		
G031C1	19.29		2013	Peach	Prima Peach 23	AID		
G031C2	36.44		2013	Peach	Prima Peach 23	AID		
G031C3	37.7		2013	Peach	Prima Peach 23	AID		
TOTALS	205.14	226.67						(5) WELLS
G034						AID	333-050-52S	(1) 20HP Turbine & (1) 40HP Turbine
G034A	36.94		2013	Peach	Prima Peach 27	AID		
G034B	18.3		2013	Nectarine	Prima Diamond 7	AID		
TOTALS	55.24	58.15						
G035						AID	333-260-26S	(2) 25HP Turbine & (1) 50HP Turbine
G035A1	42.27		2013	Peach	Prima Peach 18	AID		
G035A2	27.03		2013	Peach	Prima Peach 18	AID		
TOTALS	69.3	75.83						
G056						AID	333-090-14s & 333-090-09s	(1) 40HP Turbine & (1) 25HP Turbine
G056A	25.21		2019	Nectarine	Prima Diamond 7	AID		
G056B	24.77		2019	Nectarine	Prima Diamond 7	AID		
G056C	23.75		2012	Peach	Prima Gattie 08	AID		
G056D	33.65		2015	Peach	Prima Peach 18	AID		
TOTALS	107.38	114.96						

NOTE: * = CERTIFIED ORGANIC



LAND GROUP 3: SANGER RIVER BOTTOM								
RANCH #	FARMABLE ACRES	ASSESSED ACRES	PLANT DATE	CROP	VARIETY	DISTRICT	APN	WELL(s)
G067						AID	333-090-08S	(1) 15HP Turbine
G067A1	17		2015	Peach	Prima Peach 13	AID		
G067A2	19.98		2010	Nectarine	Prima Diamond 10	AID		
G067B	37.79		2006	Nectarine	Prima Diamond 10	AID		
TOTALS	74.77	76.16						
G020 & G022						AID/KRWD	333-090-17S, 333-090-16s, & 333-090-15s	(2) 40HP Turbine, (1) 60HP Turbine, (2) 20HP Turbine, & (2) 50HP Turbine
G020A	43.66		2011	Nectarine	Prima Diamond 19	AID/KRWD		
G020B	37.29		2016	Peach	Prima Peach 15	AID/KRWD		
G020C	43.46		2010	Nectarine	Prima Diamond 19	AID/KRWD		
G020D	37.13		2009	Nectarine	Prima Diamond 10	AID/KRWD		
G022A	37.18		2016	Peach	Prima Peach 27	AID/KRWD		
G022B	12.84		2012	Nectarine	Honey Blaze	AID/KRWD		
G022C1	25.68		2010	Nectarine	Honey Blaze	AID/KRWD		
G022C2	29.5		2010	Nectarine	Prima Diamond 04	AID/KRWD		
G022D	31.67		2012	Nectarine	Prima Diamond 04	AID/KRWD		
G022G1	32.59		2020	Nectarine	Prima Diamond 7	AID/KRWD		
G022G2	33.15		2020	Nectarine	Prima Diamond 7	AID/KRWD		
TOTALS	364.15	393.14						

NOTE: * = CERTIFIED ORGANIC



LAND GROUP 3: SANGER RIVER BOTTOM								
RANCH #	FARMABLE ACRES	ASSESSED ACRES	PLANT DATE	CROP	VARIETY	DISTRICT	APN	WELL(s)
G023 & G024						KRWD	333-130-245	(6) 50HP Turbine & (1) 40HP Turbine
G023A	33.8		2012	Peach	Peach 03	KRWD		
G023B	30.07		2012	Peach	Prima Peach 18	KRWD		
G023C	37.64		2011	Nectarine	Honey Blaze 02	KRWD		
G023D	37.53		2012	Peach	Prima Peach 15	KRWD		
G023F	38.75		2012	Nectarine	Honey Blaze	KRWD		
G023G	39.53		2010	Nectarine	Prima Diamond 24	KRWD		
G024A	41.89		2018	Peach	Prima Peach 20	KRWD		
G024B	10.74		2011	Peach	Prima Peach 15	KRWD		
G024C	42.73		2011	Nectarine	Zee Fire	KRWD		
G024D	35.18		2022	Rootstock Only	N/A	KRWD		
G024G	45		2011	Nectarine	Zee Fire	KRWD		
TOTALS	392.86	425.24						
G012						AID	333-250-11, 333-250-02s, & 333-250-01s	(2) 20HP Submersible
G012A1	18.81		2015	Peach	Prima Peach 18	AID		
G012A2	18.82		2018	Peach	Prima Peach 18	AID		
G012B	18.57		2009	Plum	Friar	AID		
G012C	19.52		2018	Mandarin	Tango Seedless	AID		
G012D	18.53		2017	Mandarin	Tango Seedless	AID		
TOTALS	94.25	100.21						(2) WELLS
G019						AID	333-130-47, 333-130-38, & 333-130-43	(1) 40HP Turbine, (1) 60HP Turbine, (1) 50HP Turbine & (2) 20HP Submersible
G019A	30.22		2018	Peach	Jume Time	AID		
G019B	16.88		2013	Peach	Prima Peach 23	AID		
G019C	38.33		2009	Nectarine	Prima Diamond 19	AID		
G019D	35.27		2009	Nectarine	Prima Diamond 19	AID		
G019F	43.72		2018	Peach	Prima Peach 20	AID		
G019G	43.87		2015	Peach	Prima Peach 15	AID		
G019H	30.76		2012	Nectarine	Zee Fire	AID		
TOTALS	239.05	253.75						(5) WELLS

NOTE: * = CERTIFIED ORGANIC





LAND GROUP 4

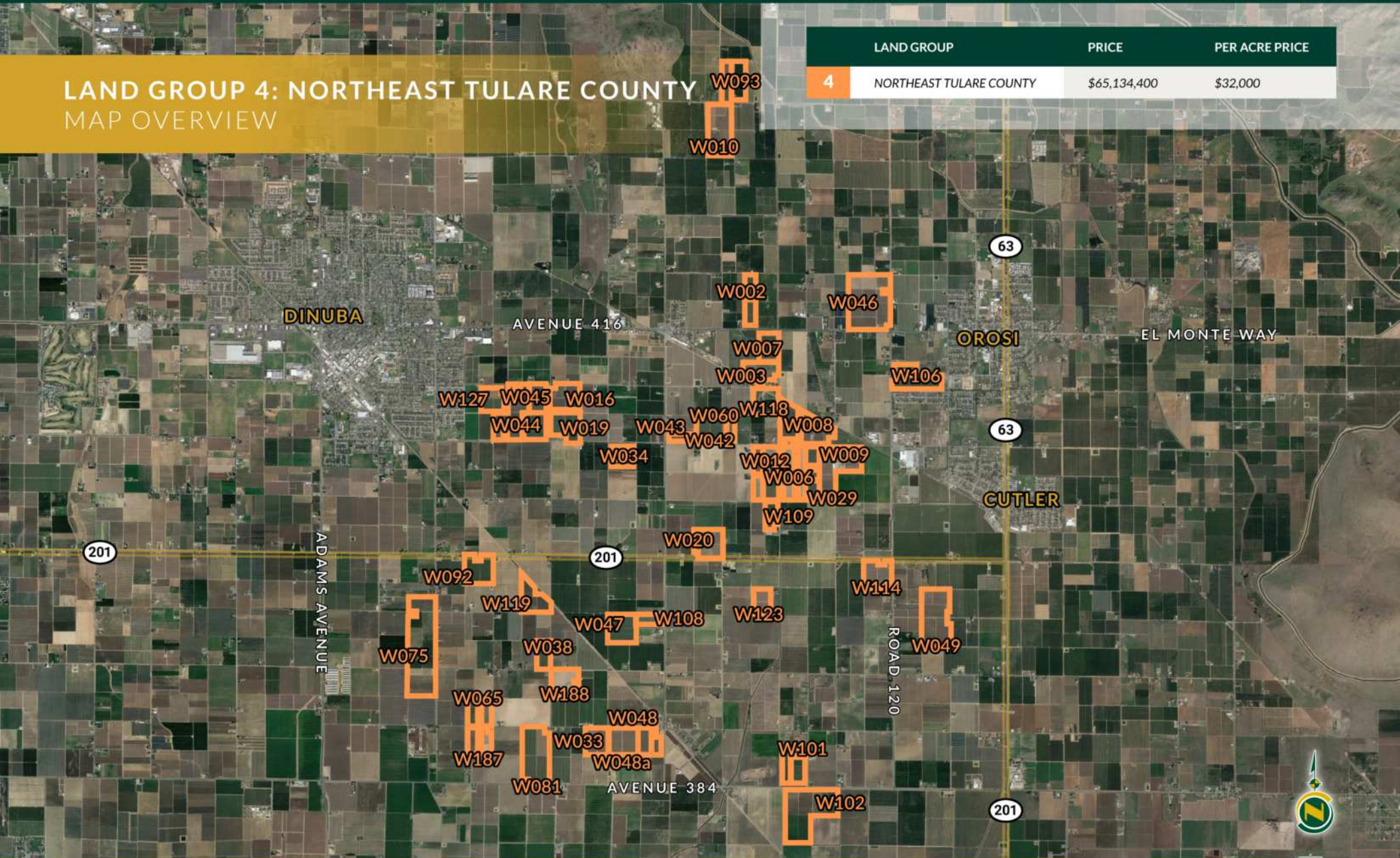
NORTHEAST TULARE COUNTY





LAND GROUP 4: NORTHEAST TULARE COUNTY
MAP OVERVIEW

LAND GROUP	PRICE	PER ACRE PRICE	
4	NORTHEAST TULARE COUNTY	\$65,134,400	\$32,000



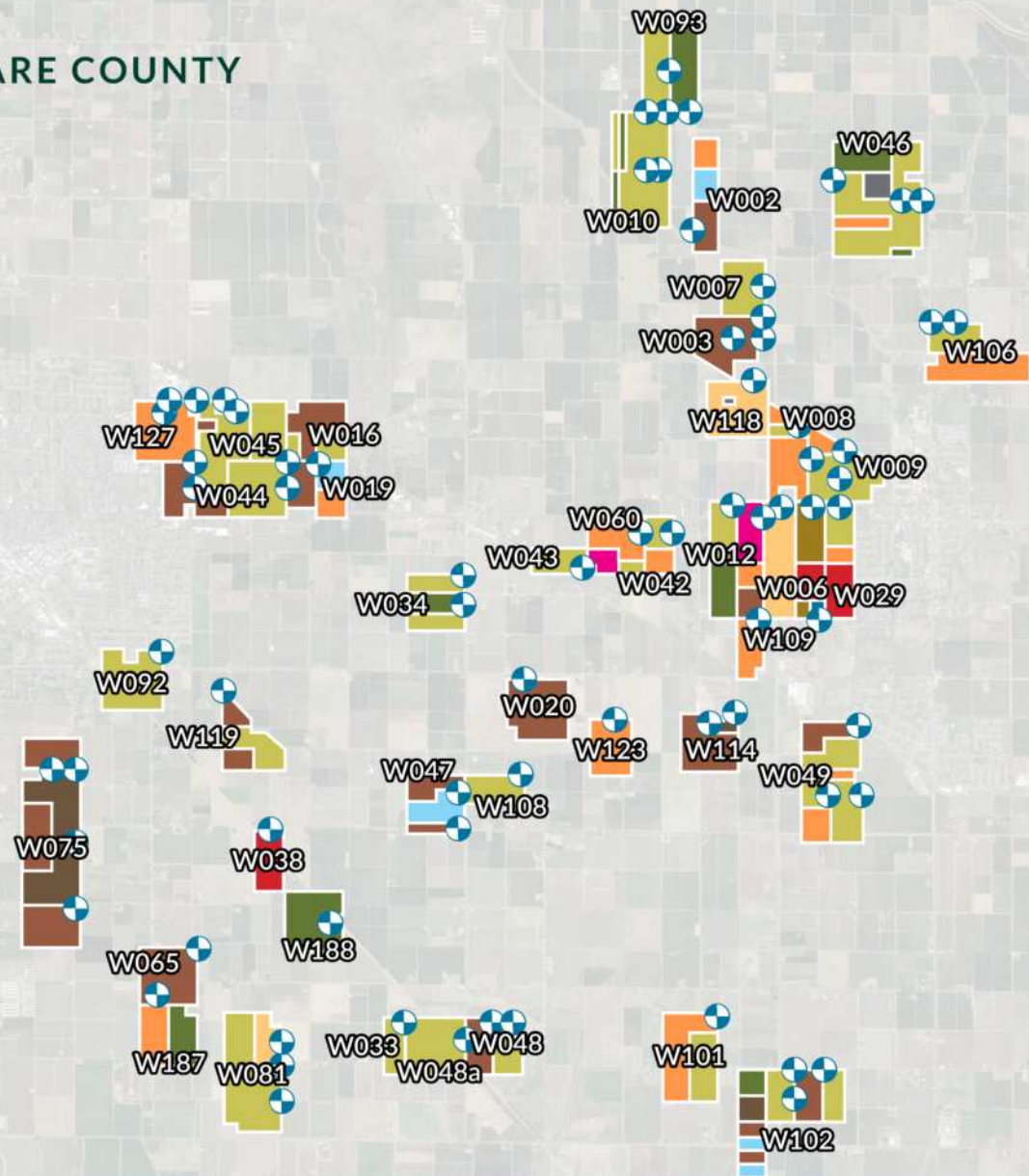
LAND GROUP 4: NORTHEAST TULARE COUNTY CROP MAP*

*Subject lines are approximate, not to scale

KEY

-  YOUNG PEACH
-  MATURE PEACH
-  YOUNG NECTARINE
-  MATURE NECTARINE
-  YOUNG PLUM
-  MATURE PLUM
-  OPEN LAND
-  ROOTSTOCK
-  PLUOT
-  APRICOT
-  RESERVOIR
-  PUMP & WELL

*YOUNG = 2020 OR YOUNGER



LAND GROUP 4: NORTHEAST TULARE COUNTY								
RANCH #	FARMABLE ACRES	ASSESSED ACRES	PLANT DATE	CROP	VARIETY	DISTRICT	APN	WELL(s)
W002						AID	021-140-020	(1) 20HP Submersible
A*	9.3		2004	Peach	Earli Rich	AID		
B*	4.37		2004	Pluot	Mellow Yellow	AID		
C*	5.2		2006	Pluot	Crimson Glo	AID		
D*	17.95		2013	Red Plum	Fall Fiesta	AID		
TOTALS	36.82	37.93						(1) WELL
W003*						AID	021-210-093	(1) 10HP Submersible, & (2) 15HP Submersible
A*	9.6		2017	Black Plum	Black Cat	AID		
B1	9		2020	Black Plum	SuPlum 53	AID		
B2	4		2020	Black Plum	SuPlum 54	AID		
B3	4.9		2020	Black Plum	SuPlum 55	AID		
B4	1.2		2020	Black Plum	SuPlum 56	AID		
C*	5.5		2005	Black Plum	Black Cat	AID		
TOTALS	34.2	37.25						(3) WELLS
W006						AID	032-030-001	(2) 20HP Turbine, & (1) 60HP Turbine
A	18			Open W/ Irrigation Lateral Lines		AID		
B1	5.51		2022	Rootstock Only		AID		
B2	5.51		2022	Rootstock Only		AID		
B3	4.36		2022	Rootstock Only		AID		
C	37.8		2021	Peach	Prima Gattie 08	AID		
D	1.85			Open Land		AID		
TOTALS	73.03	80						(3) WELLS
W007						AID	021-210-058	(1) Est.40HP Turbine
A*	27.1		2012	Nectarine	Zee Fire	AID		
TOTALS	27.1	27.82						(1) WELL

NOTE: * = CERTIFIED ORGANIC



LAND GROUP 4: NORTHEAST TULARE COUNTY								
RANCH #	FARMABLE ACRES	ASSESSED ACRES	PLANT DATE	CROP	VARIETY	DISTRICT	APN	WELL(s)
W008/ W009						AID	021-240-058	(1) 15HP Turbine, (1) 10HP Submersible, (1) 30HP Turbine, & (1) 50HP Turbine
8-A*	5.73		2013	White Peach	Summer Sweet	AID		
8-B*	5.62		2013	White Nectarine	Snow Pearl	AID		
8-C*	5.62		2013	White Nectarine	Diamond Pearl	AID		
8-D*	5.61		2013	White Peach	Snow Princess	AID		
8-F*	5.67		2013	White Peach	Ice Princess	AID		
8-G*	5.63		2013	White Peach	Sierra Snow	AID		
9-A	9.25		2009	White Peach	Late White Delight	AID	021-240-028	
9-B	12.8		2006	White Nectarine	Majestic Pearl	AID		
9-C	12.8		2008	Yellow Nectarine	August Bright	AID		
9-D	9.23		2013	Yellow Nectarine	Zee Fire	AID		
TOTALS	77.96	83.38						(4) WELLS
W010						AID	021-030-002	(1) 20HP Turbine, (1) 10HP Submersible, & (1) 40HP Turbine
A1	4.5		2014	Yellow Nectarine	Honey Lite	AID		
A2	8.82		2021	Yellow Nectarine	Honey Lite	AID		
A2a	4.29		2021	Yellow Nectarine	Honey Lite	AID		
B1	6.3		2018	Yellow Nectarine	Honey Lite	AID		
B1a	5.8		2018	Yellow Nectarine	Honey Lite	AID		
B2	7		2000	Yellow Nectarine	Honey Lite	AID		
B2a	2.36		2008	Yellow Nectarine	Honey Lite	AID		
B2b	6.93		2008	Yellow Nectarine	Honey Lite	AID		
B2c	4.3		2014	Yellow Nectarine	Honey Lite	AID		
B2d	10.25		2008	Yellow Nectarine	Honey Lite	AID		
D2	12.88		2007	Yellow Nectarine	August Bright	AID		
TOTALS	73.43	80						(3) WELLS

NOTE: * = CERTIFIED ORGANIC



LAND GROUP 4: NORTHEAST TULARE COUNTY								
RANCH #	FARMABLE ACRES	ASSESSED ACRES	PLANT DATE	CROP	VARIETY	DISTRICT	APN	WELL(s)
W012						AID	032-010-005	(1) 15HP Submersible, & (2) 50HP Turbine
A	17.62		2019	White Nectarine	Polar Zee	AID		
B	18.05		2019	Apricot	Orange Burst	AID		
C	18.17		2020	White Nectarine	Majestic Pearl	AID		
D1*	9		2002	Yellow Peach	Spring Flame 22	AID		
D2*	9.38		2016	Black Plum	Owen T	AID		
TOTALS	72.22	80						(3) WELLS
W016						AID	021-190-007	(1) 60HP Submersible & (1) 15HP Submersible
A1	7.77		2010	Red Plum	Red Yummy	AID		
A1a	9.19		2008	Red Plum	Red Yummy	AID		
A1b	2.4		1997	Red Plum	Red Yummy	AID		
A1c	2.4		1996	Red Plum	Red Yummy	AID		
C1	4.8		2007	Yellow Nectarine	Rose Bright	AID		
D*	9.2		2007	Yellow Nectarine	Zee Fire	AID		
TOTALS	35.76	38.14						(2) WELLS
W019*						AID	021-190-025	(1) 15HP Submersible
A*	9.5		2011	Black Plum	Su Plum 41	AID		
B*	14.57		2013	Pluot	Ebony Rose	AID		
C*	9.7		2015	White Peach	Rich Snow	AID		
TOTALS	33.77	36.6						(1) WELL
W020*						AID	032-020-018	(1) 15HP Submersible
A*	7.21		2018	Black Plum	Su Plum 53	AID		
B*	15.66		2018	Black Plum	Su Plum 53	AID		
C*	14		2018	Black Plum	Su Plum 53	AID		
TOTALS	36.87	38.89						(1) WELL

NOTE: * = CERTIFIED ORGANIC



LAND GROUP 4: NORTHEAST TULARE COUNTY								
RANCH #	FARMABLE ACRES	ASSESSED ACRES	PLANT DATE	CROP	VARIETY	DISTRICT	APN	WELL(s)
W029						AID	032-030-002	(1) 30HP Turbine
A*	6.2		2012	White Nectarine	Candy Pearl	AID		
B*	7.5		2012	White Nectarine	Summer Sweet	AID		
C*	4.9		2012	Yellow Peach	June Time	AID		
D1	5.06		2022	Rootstock		AID		
D2	6.17		2022	Rootstock		AID		
D3	5.95		2022	Rootstock		AID		
TOTALS	35.78	40						(1) WELL
W033						AID	030-190-004	(1) 10HP Turbine
A	13.72		2017	Yellow Nectarine	August Fire	AID		
TOTALS	13.72	14.84						
W034						AID	030-240-003	(2) 15HP Submersible
A	14.88		2022	Yellow Peach	Prima Peach14	AID		
B*	8.5		2006	White Peach	Snow Blaze	AID		
C*	13.5		2018	Yellow Peach	Prima Peach14	AID		
TOTALS	36.88	40						(2) WELLS
W038						AID	030-160-007	(1) 15HP Submersible
A1	9.06		2022	Rootstock		AID		
A2	9.03		2022	Rootstock		AID		
TOTALS	18.09	20						
W042						AID	021-220-017	(1) 15HP Submersible
A*	9.5		2016	Yellow Nectarine	August Fire	AID		
B*	9.37		2017	Yellow Peach	Farli Rich	AID		
TOTALS	18.87	19.73						

NOTE: * = CERTIFIED ORGANIC



LAND GROUP 4: NORTHEAST TULARE COUNTY								
RANCH #	FARMABLE ACRES	ASSESSED ACRES	PLANT DATE	CROP	VARIETY	DISTRICT	APN	WELL(s)
W043						AID	021-220-023	(1) 20HP Submersible
A	17.6		2007	White Nectarine	Majestic Pearl	AID		
TOTALS	17.6	18.24						(1) WELL
W044 *						AID	018-190-008	(1) 20HP Turbine, & (1) 15HP Submersible
A	19.07		2013	Yellow Nectarine	Su Nect 21	AID		
B*	5.86		2014	Yellow Nectarine	Honey Light	AID	018-190-029	
C*	11.72		2015	Yellow Nectarine	Honey Light	AID		
TOTALS	36.65	37.85						(2) WELLS
W045 *						AID	018-190-007, 018-190-018 & 018-190-034	(3) 20HP Submersible & (1) 50HP Turbine
A1	6.26		2007	Yellow Nectarine	Red Bright	AID		
A2a	6.13		2014	Yellow Nectarine	Zee Fire	AID		
A2b	17.92		2014	Yellow Nectarine	Zee Fire	AID		
A3a	11		2003	Red Plum	Sugar Jewel	AID		
A3b	17.23		2003	Red Plum	Sugar Jewel	AID		
A4	16.16		2009	Yellow Nectarine	August Bright	AID		
B2	8.33		2013	Yellow Nectarine	Su Nect 21	AID		
B3	10.06		2005	Red Plum	Yummy Beaut	AID		
TOTALS	93.09	96.51						(4) WELLS

NOTE: * = CERTIFIED ORGANIC



LAND GROUP 4: NORTHEAST TULARE COUNTY								
RANCH #	FARMABLE ACRES	ASSESSED ACRES	PLANT DATE	CROP	VARIETY	DISTRICT	APN	WELL(S)
W046						AID	021-120-030	(1) 40HP Submersible, (1) 20HP Submersible & (1) 5HP Submersible
A1	17.7		2021	Yellow Nectarine	August Bright	AID		
A2	5		2020	White Nectarine	Polar Light	AID		
A3	4.4		2010	White Nectarine	Polar Light	AID		
A4	9.2			Open Land		AID		
B1	14.8		2009	White Nectarine	Polar Light	AID		
A5	9.26		2006	Yellow Nectarine	August Bright	AID		
B2a	12.39		2004	Yellow Nectarine	August Bright	AID		
B2b	4.1		2004	Yellow Nectarine	August Bright	AID		
B3	9.39		2010	White Peach	White Delight	AID		
B4	13.05		2004	Yellow Nectarine	September Bright	AID		
B6	1.9		2020	Yellow Nectarine	August Bright	AID		
TOTALS	101.19	107.3						(3) WELLS
W047/ W108						AID	030-210-013, & 030-210-002	(1) 15HP Submersible & (2) 40HP Turbine
47-A*	4.82		2005	Black Plum	Black Cat	AID		
47-B1*	4.29		2005	Red Plum	Hiroimi Red	AID		
47-B2*	5.36		2005	Pluot	Flavor Heart	AID		
47-C1a*	5.36		2005	Pluot	Sugar Jewel	AID		
47-C1b*	4.29		2005	Pluot	Sugar Jewel	AID		
47-D*	4.82		2005	Pluot	Dapple Dandy	AID		
47-F*	9.65		2005	Red Plum	September yummy	AID		
108-A*	18.5		2019	Yellow Nectarine	Prima Diamond 19	AID	030-210-012	
TOTALS	57.09	60						(3) WELLS

NOTE: * = CERTIFIED ORGANIC



LAND GROUP 4: NORTHEAST TULARE COUNTY								
RANCH #	FARMABLE ACRES	ASSESSED ACRES	PLANT DATE	CROP	VARIETY	DISTRICT	APN	WELL(s)
W048						AID	030-190-013	(2) 15HP Submersible
B1	7.51		2003	Red Plum	Red Yummy	AID		
B2	10.53		2003	Red Plum	September Yummy	AID		
B4a	3.06		2006	Yellow Nectarine	September Bright	AID		
B4b	11.62		2002	Yellow Nectarine	September Bright	AID		
TOTALS	32.72	38.86						
W048A						AID	030-190-005	(1) 50HP Turbine
A	37.52		2014	Yellow Nectarine	Zee Fire	AID		
TOTALS	37.52	39.5						
W049*						AID	033-110-025 & 033-120-003	(2) 15HP Submersible, & (1) 40HP Submersible
A1	6.25		2011	Red Plum	Red Yummy	AID		
A2	3.6		2011	Red Plum	September Yummy	AID		
A3	4		2010	Red Plum	Fall Fiesta	AID		
A4a	6.62		2004	Yellow Nectarine	August Fire	AID		
A4b	1.6		2004	Yellow Nectarine	August Fire	AID		
A5	9.13		2007	Yellow Nectarine	Grand Bright	AID		
A6	7.77		2004	Yellow Nectarine	August Fire	AID		
A7a	5.9		2014	Yellow Peach	Su Peach 20	AID		
A7b	8.33		2014	Yellow Peach	Su Peach 20	AID		
B2	18.22		2007	White Nectarine	Majestic Pearl	AID		
TOTALS	71.42	76.82						

NOTE: * = CERTIFIED ORGANIC



LAND GROUP 4: NORTHEAST TULARE COUNTY								
RANCH #	FARMABLE ACRES	ASSESSED ACRES	PLANT DATE	CROP	VARIETY	DISTRICT	APN	WELL(s)
W060						AID	021-220-041	(1) 15HP Submersible
A1*	7.33		2011	White Peach	Spring Snow	AID		
A2a*	7.16		2016	Yellow Peach	Sierra Rich	AID		
A2b*	7.89		2003	Yellow Peach	Sierra Rich	AID		
A4	8.6		2004	Apricot	Juicy Jack	AID		
A5*	4.7		2006	Yellow Nectarine	Honey Diva	AID		
TOTALS	35.68	37.71						(1) WELL
W065						AID	030-170-009	(1) 40HP Submersible
A*	17.62		2018	Black Plum	Angeleno	AID		
B*	17.62		2018	Black Plum	Friar	AID		
TOTALS	35.24	40						(1) WELL

NOTE: * = CERTIFIED ORGANIC



LAND GROUP 4: NORTHEAST TULARE COUNTY								
RANCH #	FARMABLE ACRES	ASSESSED ACRES	PLANT DATE	CROP	VARIETY	DISTRICT	APN	WELL(s)
W075*						AID	030-100-07, 030-090-29, 030-090-06, 030-080-04	(1) 15HP Turbine, (1) 20HP Turbine, & (2) 25HP Turbine
A1*	9.9		2017	Black Plum	Owen T	AID		
A2*	8.18		2017	Black Plum	Su Plum 42	AID		
B	9.25		2022	Black Plum	Angeleno	AID		
C*	23.41		2017	Black Plum	Angeleno	AID		
D	8.44		2019	Black Plum	Su Plum 41	AID		
F	5.36		2022	Black Plum	Angeleno	AID		
G1a	9.37		2011	Black Plum	Su Plum 41	AID		
G1b	9.9		2011	Black Plum	Su Plum 41	AID		
H	9.48		2001	Black Plum	Friar	AID		
I1	33.06		2022	Black Plum	Su Plum 41	AID		
TOTALS	126.35	136.51						(4) WELLS
W081*						AID	Home 030-180-015, & 030-180-019	(1) 40HP Turbine, (1) 10HP Turbine, & (1) 50HP Turbine
A1*	18.83		2010	Yellow Nectarine	August Bright	AID		
A2*	17.68		2021	Yellow Peach	Su Peach 22	AID		
B1*	17.21		2014	Yellow Nectarine	Summer Flare 27	AID		
B2*	17.65		2014	Yellow Nectarine	Summer Flare 27	AID		
TOTALS	71.37	76.99						(3) WELLS
W092						AID	030-150-030	(1) 40HP Turbine
A*	12.5		2013	White Nectarine	Diamond Pearl	AID		
B*	5.6		2013	White Nectarine	Snow Pearl	AID		
C*	16.98		2013	Yellow Nectarine	September Bright	AID		
TOTALS	35.08	38.04						(1) WELL

NOTE: * = CERTIFIED ORGANIC



LAND GROUP 4: NORTHEAST TULARE COUNTY								
RANCH #	FARMABLE ACRES	ASSESSED ACRES	PLANT DATE	CROP	VARIETY	DISTRICT	APN	WELL(s)
W093						AID	373-160-26	(1) 25HP Submersible, & (1) 40HP Turbine
A	25.86		2022	Yellow Nectarine	Sweet Flare 29	AID		
B	29		2009	Yellow Nectarine	Grand Bright	AID		
TOTALS	54.86	57.43						(2) WELLS
W101 *						AID	033-070-018, 033-070-019, 033-070-020, & 033-070-016	(1) 40HP Submersible, & (1) 15HP Submersible
A*	17.8		2012	Yellow Peach	Su Peach 17	AID		
B*	17.4		2012	Yellow Peach	Su Peach 15	AID		
C*	4.5		2012	Yellow Nectarine	Su Nect 21	AID		
D*	13		2012	Yellow Nectarine	Rose Bright	AID		
TOTALS	52.7	59.4						(2) WELLS
W102 *						AID	047-030-015	(1) 50HP Turbine, (1) 25HP Turbine & (1) 15HP Submersible
A1*	18.44		2008	Yellow Nectarine	September Bright	AID		
A2*	8.67		2020	Black Plum	20HD186	AID		
A3*	15.3		2012	Yellow Nectarine	August Fire	AID		
A4*	10		2018	Yellow Nectarine	Honey May	AID		
A5*	19		2018	Black Plum	Su Plum 41	AID		
B1*	4.77		2006	Black Plum	Angeleno	AID		
B2*	4.77		2006	Black Plum	Flavor Rich	AID		
B3*	5.3		2006	Green Plum	October Sun	AID		
B4*	5		2006	Black Plum	Howard Sun	AID		
B5*	4.9		2006	Black Plum	Friar	AID		
B6*	4.9		2006	Pluot	Sweet Treat	AID		
B7*	4.9		2006	Red Plum	Joanna Red	AID		
B8*	5.71		2006	Pluot	Mellow Yellow	AID		
TOTALS	111.66	117.27						(3) WELLS

NOTE: * = CERTIFIED ORGANIC



LAND GROUP 4: NORTHEAST TULARE COUNTY								
RANCH #	FARMABLE ACRES	ASSESSED ACRES	PLANT DATE	CROP	VARIETY	DISTRICT	APN	WELL(s)
W106*						AID	021-360-008 021-360-010 021-360-011	(2) 15HP Submersible
A1*	18.46		2014	Yellow Nectarine	Prima Diamond 19	AID		
B1*	14.78		2014	Yellow Peach	Su Peach 16	AID		
B2*	15.22		2014	Yellow Peach	Su Peach 20	AID		
TOTALS	48.46	54.04						
W109						AID	032-020-021	(1) 15HP Submersible
A	16.05		2014	White Peach	Snow Drop	AID		
TOTALS	16.05	19						
W114						AID	033-100-018	(2) 15HP Submersible
A	30.42		2017	Black Plum	Angeleno	AID		
B	3.6		2020	Black Plum	Angeleno	AID		
TOTALS	34.02	35.19						
W118						AID	021-220-027, & 021-220-037	(1) 25HP Submersible
A	16.25		2022	Peach	V2.105	AID		
B1	2.7		2022	Peach	V2.105	AID		
B2	10.68		2022	Peach	V2.105	AID		
C	2.95		2022	Peach	V2.105	AID		
TOTALS	32.58	35.54						(1) WELL
W119						AID	030-150-035	(1) 25HP Submersible
A1	6.98		2004	Yellow Nectarine	August Fire	AID		
A2a	7.04		2010	Red Plum	Fruit Punch	AID		
A2b	6.91		2010	Red Plum	Fruit Punch	AID		
B	9.68		2014	Yellow Nectarine	Zee Fire	AID		
TOTALS	30.61	33.1						(1) WELL

NOTE: * = CERTIFIED ORGANIC



LAND GROUP 4: NORTHEAST TULARE COUNTY								
RANCH #	FARMABLE ACRES	ASSESSED ACRES	PLANT DATE	CROP	VARIETY	DISTRICT	APN	WELL(s)
W123						AID	033-010-008	(1) 20HP Submersible
A	13.2		2013	White Peach	Snow Princess	AID		
B	14.3		2013	White Peach	Summer Sweet	AID		
TOTALS	27.5	30						(1) WELL
W127						AID	018-190-003, 018-190-017, & 018-190-015	(1) 40HP Turbine, (1) 15HP Submersible, & (1) 10HP Submersible
A1*	8.33		2013	Yellow Peach	Prima Gattie 12	AID		
A2*	8.23		2013	Yellow Peach	Prima Gattie 12	AID		
C*	9.77		2013	Yellow Peach	June Time	AID		
D*	9.77		2013	White Peach	Snow Giant	AID		
TOTALS	36.1	38.83						(3) WELLS
W187						AID	030-180-009	(1) 40HP Submersible
A1	5.6		2016	Yellow Peach	Rich Lady	AID		
A2	5.6		2008	Yellow Peach	August Flame	AID		
A3	7		2013	Yellow Peach	Summer Flame 29	AID		
A4	15.71		2022	Yellow Nectarine	August Fire	AID		
Totals	33.91	37						(1) well
W188						AID	Building Site 030-200-018, & Crop 030-200-019	(1) 40HP Turbine
A	29.25		2021	Yellow Nectarine	August Bright	AID		
TOTALS	29.25	39.74						(1) WELL

NOTE: * = CERTIFIED ORGANIC





LAND GROUP 5

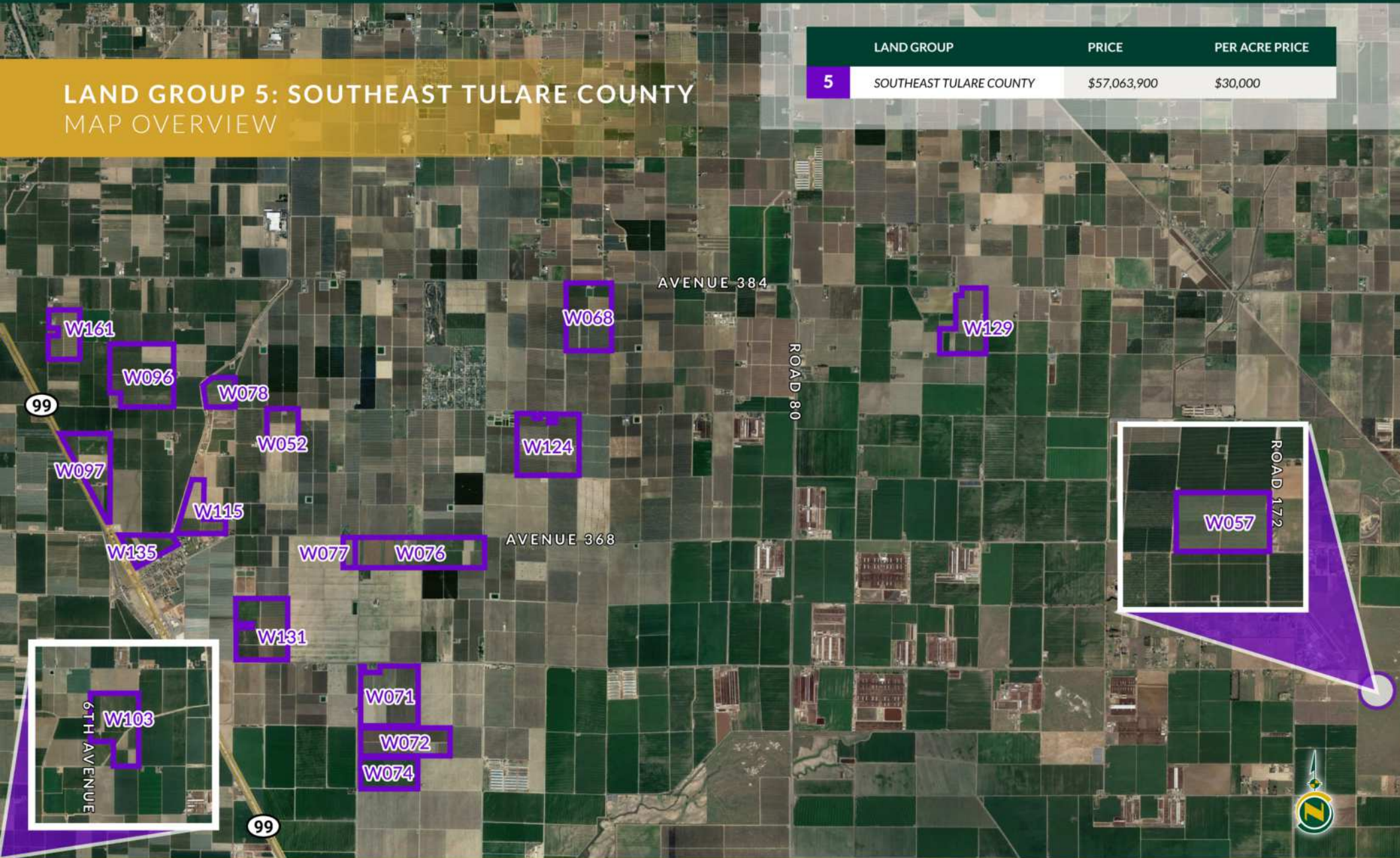
SOUTH EAST TULARE COUNTY





LAND GROUP 5: SOUTHEAST TULARE COUNTY
MAP OVERVIEW

LAND GROUP	PRICE	PER ACRE PRICE
5 SOUTHEAST TULARE COUNTY	\$57,063,900	\$30,000



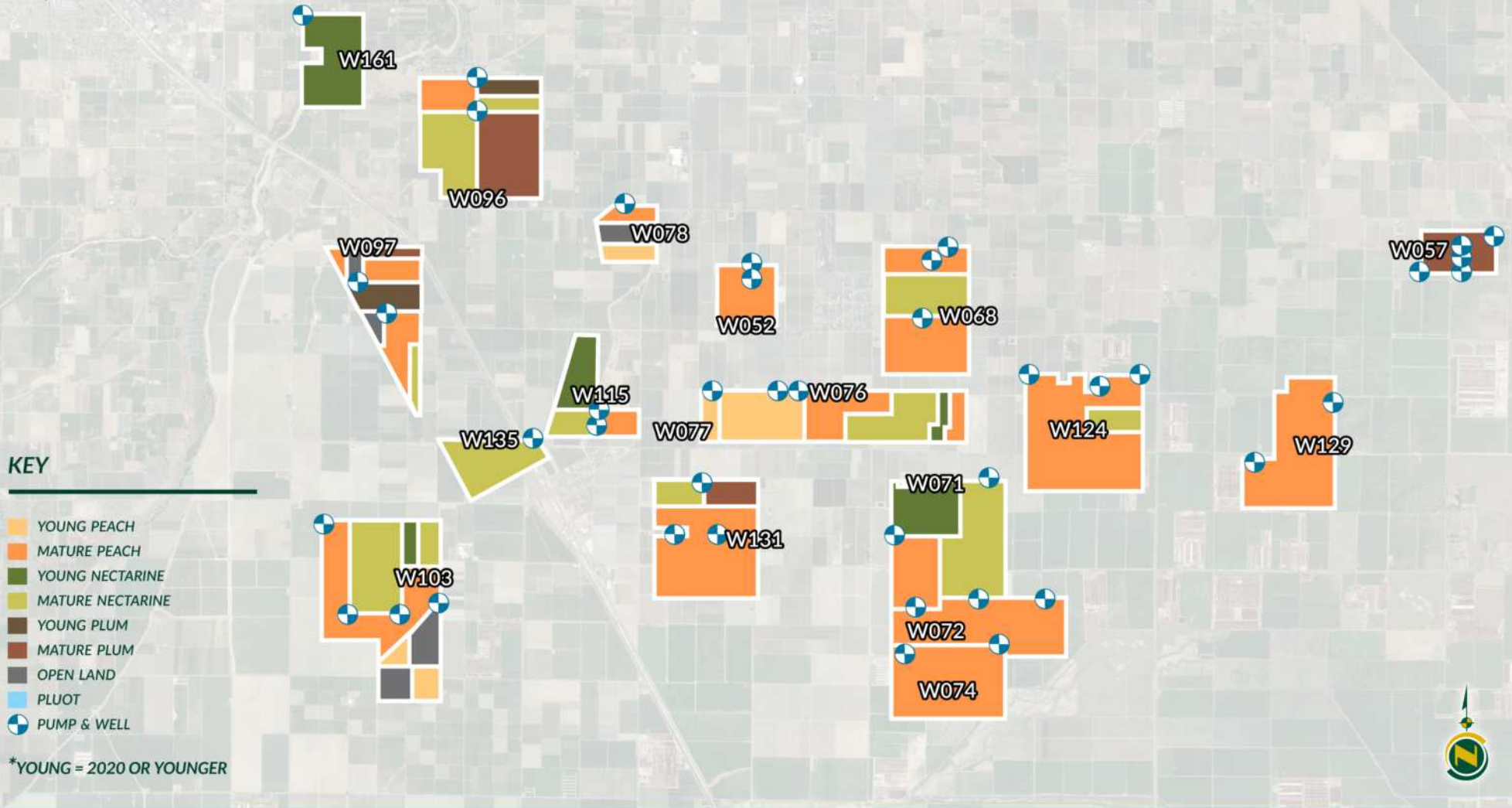
All information contained herein is deemed reliable but not guaranteed by seller nor broker and should be independently verified by potential buyers. We assume no liability for errors or omissions.





LAND GROUP 5: SOUTHEAST TULARE COUNTY CROP MAP*

*Subject lines are approximate, not to scale



LAND GROUP 5: SOUTH TULARE COUNTY								
RANCH #	FARMABLE ACRES	ASSESSED ACRES	PLANT DATE	CROP	VARIETY	DISTRICT	APN	WELL(s)
W052*						50% AID	043-133-002 & 043-133-003	(1) 15HP Submersible, & (1) 20HP Turbine
A1	8		2013	Yellow Peach	Su Peach 15			
A2	7.65		2013	Yellow Peach	Su Peach 15			
B1	9.8		2020	Yellow Peach	Su Peach 21			
B2	10.7		2020	Yellow Peach	Su Peach 21			
TOTALS	36.15	40						
W057*						SCID	050-120-001	(3) 15HP Submersible, & (2) 7.5HP Submersible
A1*	12.64		2014	Black Plum	Black Diamond	SCID		
A2*	12.4		2004	Red Plum	Yummy Beaut	SCID		
A3*	10.1		2014	Black Plum	Black Cat	SCID		
A4*	9.39		2014	Black Plum	Black Diamond	SCID		
B1*	11.41		2005	Black Plum	Owen T	SCID		
B2*	9.39		2014	Black Plum	Black Diamond 50	SCID		
B4*	11.32		2014	Red Plum	Red Yummy	SCID		
B5*	14.08		2014	Black Plum	Black Diamond 43	SCID		
TOTALS	90.73	100					(2) WELLS	
W068						AID 75%	043-020-028	(1) 50HP Turbine, (1) 30HP Turbine, & (1) 5HP Submersible
A1*	20.84		2016	Yellow Peach	August Flame			
A2	19.72		2008	Yellow Nectarine	Zee Fire			
A3	20.18		2020	Yellow Nectarine	September Bright			
B	15.54		2008	Yellow Peach	August Flame			
C	36.71		2008	Yellow Peach	Spring Flame 22			
TOTALS	112.99	125.38					(3) WELLS	

NOTE: * = CERTIFIED ORGANIC



LAND GROUP 5: SOUTH TULARE COUNTY								
RANCH #	FARMABLE ACRES	ASSESSED ACRES	PLANT DATE	CROP	VARIETY	DISTRICT	APN	WELL(S)
W071*						AID 55%	045-030-034, 045-030-035, & 045-030-015	(1) 40HP Turbine, & (1) 50HP Turbine
A1	30		1999	Yellow Nectarine	Prince Jim			
A2	42.44		2018	Yellow Nectarine	Honey May			
B1	18.4		2014	Yellow Nectarine	Honey Lite			
B2	24.7		1999	Yellow Nectarine	Honey Lite			
B3	34.7		2021	Yellow Peach	Su Peach 22			
TOTALS	150.24	156.63						(2) WELLS
W072*						AID 5%	045-030-016, & 045-030-019	(2) 30HP Submersible
A1a	39.44		2008	Fzn Peach	Fairtime			
A1b	8.48		2014	Fzn Peach	Fairtime			
A2	19.07		2008	Yellow Peach	Prima Peach 14			
B2	15.1		2019	Yellow Peach	Su Peach21			
B3	15.1		2017	Yellow Peach	Summer Peach 26			
B4	18.68		2008	Yellow Peach	Earli Rich			
TOTALS	115.87	120						(2) WELLS
W074						AID 5%	045-030-018	(1) 40HP Turbine, & (1) 20HP Submersible
A*	9.5		2006	Fzn Peach	Fairtime			
B*	22.5		2006	Yellow Peach	Zee Lady			
C1*	11.25		2006	Yellow Peach	August Flame			
C2*	11.25		2006	Yellow Peach	August Flame			
G*	22.5		2006	Yellow Peach	Summer Flame 34			
TOTALS	77	78.5						(2) WELLS

NOTE: * = CERTIFIED ORGANIC



LAND GROUP 5: SOUTH TULARE COUNTY								
RANCH #	FARMABLE ACRES	ASSESSED ACRES	PLANT DATE	CROP	VARIETY	DISTRICT	APN	WELL(s)
W076*						AID 50%	045-010-014, & 045-010-015	(2) 50HP Turbine
A1*	5.9		2019	White Peach	Snow Lady			
A2*	18.1		2014	Yellow peach	Su Peach 21			
A3*	8.3		2003	White Nectarine	Giant Pearl			
A4*	5.7		2020	Yellow Nectarine	Honey May			
A5*	5.6		2015	White Peach	Sierra Snow			
B1*	14		2015	Yellow Peach	Summer Flame 26			
B2a*	4.8		2006	Yellow Nectarine	Su Nect 21			
B2b*	4.8		2013	Yellow Nectarine	Su Nect 21			
B2c*	5.7		2007	Yellow Nectarine	Su Nect 21			
B2d*	4.2		2006	Yellow Nectarine	Su Nect 21			
B2e*	5.1		2013	Yellow Nectarine	Su Nect 21			
B4*	5.1		2020	Yellow Nectarine	Honey May			
B8*	9.19		2015	White Peach	Snow Princess			
C1a	12.7		2014	Yellow Peach	Prima Peach 14			
C1b	5.3		2014	Yellow Peach	Prima Peach 14			
C1c	5.3		2014	Yellow Peach	Prima Peach 14			
C2a	5.25		2017	Yellow Peach	Prima Peach 14			
C2b	5.3		2017	Yellow Peach	Prima Peach 14			
C3	5.3		2010	Yellow Peach	Prima Peach 14			
C4a	5.3		2018	Yellow Peach	Prima Peach 14			
C4b	10.6		2018	Yellow Peach	Prima Peach 14			
TOTALS	151.54	161.12						(2) WELLS
W077						AID 50%	045-010-004	(3) 15HP Submersible
A*	19.1		2020	Yellow Peach	Summer Flame 34			
TOTALS	19.1	20						

NOTE: * = CERTIFIED ORGANIC



LAND GROUP 5: SOUTH TULARE COUNTY								
RANCH #	FARMABLE ACRES	ASSESSED ACRES	PLANT DATE	CROP	VARIETY	DISTRICT	APN	WELL(s)
W078						AID 75%	043-010-037	(1) 20HP Submersible
A*	9.6		2007	Yellow Peach	Sierra Rich			
B	9.73			Open Land				
C*	17.4		2020	Yellow Peach	Summer Flame 34			
TOTALS	36.73	40.5						(1) WELL
W096 *						AID 75%	043-010-047	(1) 50HP Turbine, & (1) 40HP Submersible
A1a	10.2		2003	Yellow Peach	Summer Flame 26			
A1b	10.2		1999	Yellow Peach	Summer Flame 26			
A3	25		2018	Yellow Nectarine	Summer Flare 27			
B1	7.5		2019	Yellow Nectarine	Summer Flare 27			
B2	16.19		2021	Black Plum	Su Plum 58			
B4a	14.03		2011	Black Plum	Su Plum 41			
B4b	19.4		2011	Black Plum	Su Plum 41			
C	25.93		2018	Yellow Nectarine	Honeylicious			
D1	7.6		2003	Black Plum	Black Splendor			
D2	10.8		2005	Black Plum	Black Cat			
TOTALS	146.85	150.68						(2) WELLS
W097 *						AID 75%	042-030-012, & 042-030-022	(1) 40HP Turbine, & (1) 30HP Turbine
A1a	5.7		2014	Yellow Peach	Sierra Rich			
A1b	6.7			Open Land				
A1c	4.2			Open Land				
A1d	9.34		2012	Yellow Peach	Sierra Rich			
B1a	9		1998	White Peach	Snow Blaze			
B1b	9		2007	White Peach	Snow Blaze			
B3	17.5		2021	Black Plum	Su Plum 58			
B4	8.75		2016	Black Plum	Su Plum 51			
D1	8.4		2003	Yellow Peach	Summer Flame 34			
D2	9.2		2019	White Nectarine	Snow Pearl			
TOTALS	87.79	89.38						(2) WELLS

NOTE: * = CERTIFIED ORGANIC



LAND GROUP 5: SOUTH TULARE COUNTY								
RANCH #	FARMABLE ACRES	ASSESSED ACRES	PLANT DATE	CROP	VARIETY	DISTRICT	APN	WELL(s)
W103						KCWD	Kings Co 014-030-005	(1) 20HP Submersible, (1) 60HP Turbine, (1) 125HP RAGD, & (1) 50HP Turbine
A1*	12		2000	Yellow Nectarine	Grand Bright	KCWD		
A2*	10		2000	Yellow Nectarine	Prince Jim	KCWD		
A3*	5.08		2005	Yellow Peach	Early Rich	KCWD		
A4a*	5.08		2014	Yellow Peach	Spring Flame	KCWD		
A4b*	6.02		2005	Yellow Peach	Spring Flame	KCWD		
A5*	24.6		2019	Yellow Nectarine	Zee Fire	KCWD		
B1*	10.4		2000	Yellow Nectarine	Rose Bright	KCWD		
B2	5.11		2022	Yellow Nectarine	Rose Bright	KCWD		
B3a*	2.2		2005	Yellow Peach	Rich Lady	KCWD		
B3b*	2.5		2005	Yellow Peach	Rich Lady	KCWD		
B4*	4.37		2005	Yellow Peach	July Flame	KCWD		
B5*	4.9		2005	Yellow Peach	July Flame	KCWD		
B6*	15.6		2013	Yellow Nectarine	Honey Royale	KCWD		
B7*	12.85		2014	Yellow Peach	Sierra Rich	KCWD		
B8*	13.98		2014	Yellow Peach	June Time	KCWD		
C1	4.87			Open Land		KCWD		
C3	10.56		2022	Yellow Peach	Summer Flame 26	KCWD		
C4	5.09			Open Land		KCWD		
C5	5.09			Open Land		KCWD		
C6	5.09			Open Land		KCWD		
C7	9.2		2022	Yellow Peach	Summer Flame 26	KCWD		
C8	9.2			Open Land		KCWD		
TOTALS	183.79	200						(4) WELLS
W115						AID 75%	043-132-030	(1) 25HP Submersible, & (1) 15HP Submersible
A	27		2019	Yellow Nectarine	Honey Royale			
B	14.07		2008	Yellow Nectarine	Honey Royale			
C	15.8		2019	Yellow Peach	Spring Flame 22			
TOTALS	56.87	60.74						(2) WELLS

NOTE: * = CERTIFIED ORGANIC



LAND GROUP 5: SOUTH TULARE COUNTY								
RANCH #	FARMABLE ACRES	ASSESSED ACRES	PLANT DATE	CROP	VARIETY	DISTRICT	APN	WELL(s)
W124						AID 50%	043-120-037, 043-120-038, & 043-120-039	(1) 20HP Submersible, (1) 50HP Turbine, & (1) 25HP Submersible
A1a	9.53		1994	White Peach	Snow Princess			
A1b	18.78		2004	White Peach	Snow Princess			
A3	15.64		2004	White Peach	Ice Princess			
A4	10.6		2014	Yellow Peach	Spring Flame 20.5			
A5a	20.07		2015	Yellow Peach	Summer Flame 26			
A5b	18.54		2015	Yellow Peach	Summer Flame 27			
B1	19.6		2000	Yellow Nectarine	Grand Bright			
B2	19		2011	Yellow Peach	Su Peach 16			
B4	17.49		2018	White Peach	Snow Flame 25			
TOTALS	149.25	156.4						(3) WELLS
W129*						AID 75%	047-010-049	(2) 75HP Turbine
A1	34.86		2020	Yellow Peach	Su Peach 17			
A2	40.08		2020	Yellow Peach	Spring Flame 22			
A3	38.49		2020	Yellow Peach	May Princess			
B	37.63		2020	Yellow Peach	Su Peach 21			
TOTALS	151.06	160.88					047-010-030	(2) WELLS
W131*						AID 25%	045-010-031	(1) 50HP Turbine, & (1) 60HP Turbine
A1	18.2		2012	Yellow Nectarine	Su Nect 21			
A2	20		2012	Black Plum	Su Plum 43			
A3a	10.2		2012	Yellow Peach	Summer Flame 29			
A3b	13		2012	Yellow Peach	Summer Flame 29			
A4	29		2012	Yellow Peach	August Flame			
A5	19.6		2012	Yellow Peach	August Flame			
A6	19.6		2012	Yellow Peach	Su Peach 17			
TOTALS	129.6	134.44						(2) WELLS

NOTE: * = CERTIFIED ORGANIC



LAND GROUP 5: SOUTH TULARE COUNTY								
RANCH #	FARMABLE ACRES	ASSESSED ACRES	PLANT DATE	CROP	VARIETY	DISTRICT	APN	WELL(s)
W135						AID 25%	040-010-031	(1) 20HP Submersible
A1	11.37		2012	Yellow Nectarine	Honey Lite			
A2	24.35		2014	Yellow Nectarine	Prince Jim			
A3	6.2		2019	Yellow Nectarine	Prince Jim			
TOTALS	41.92	48.36						(1) WELL
W161						AID 75%	042-020-038, & 042-020-045	(1) 60HPTurbine
A	29.78		2020	Yellow Nectarine	September Bright			
B	27.1		2020	Yellow Nectarine	Honey Lite			
TOTALS	56.88	59.12						(1) WELL

NOTE: * = CERTIFIED ORGANIC



LAND GROUP 6

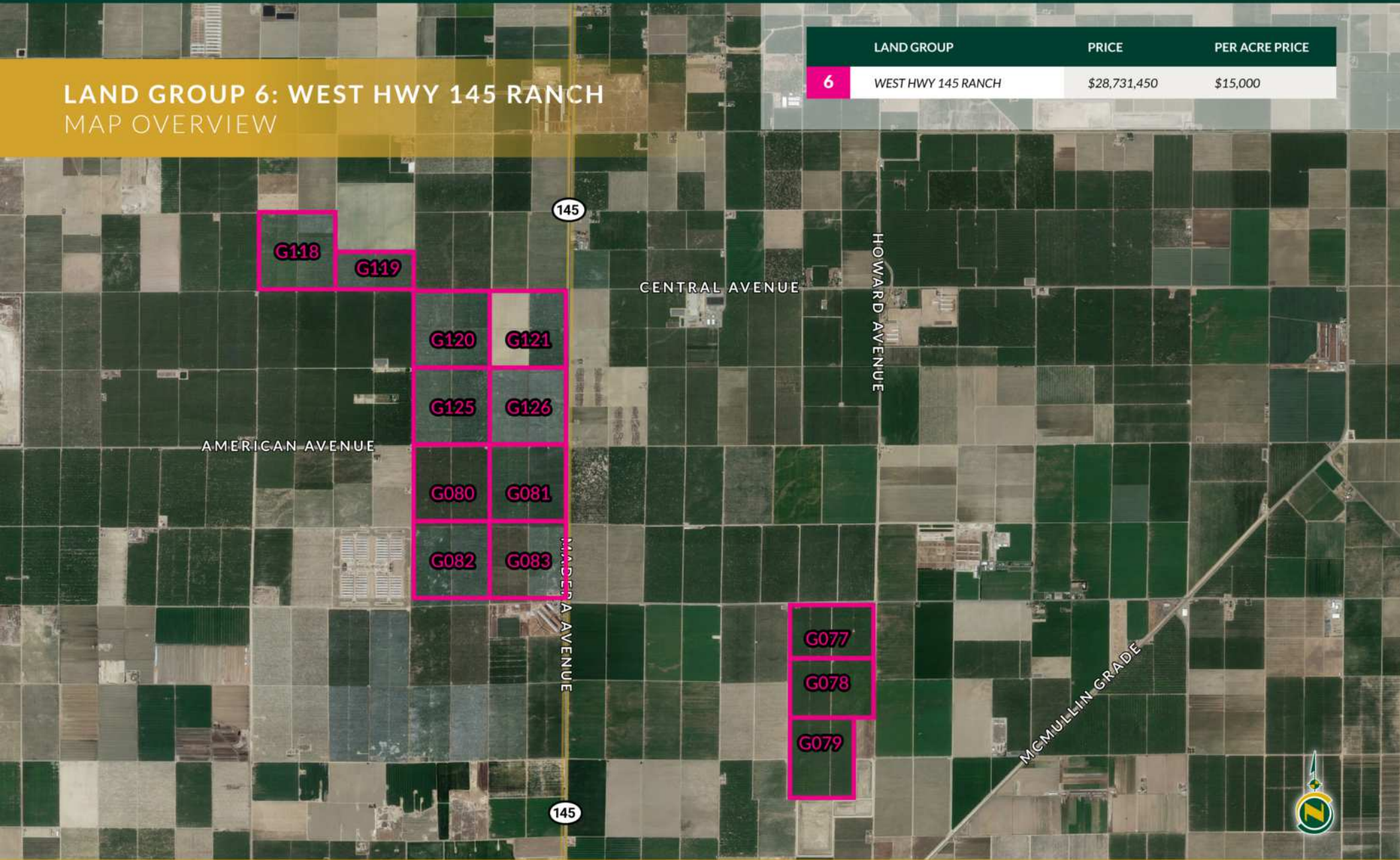
WEST HIGHWAY 145 RANCH



LAND GROUP 6: WEST HWY 145 RANCH

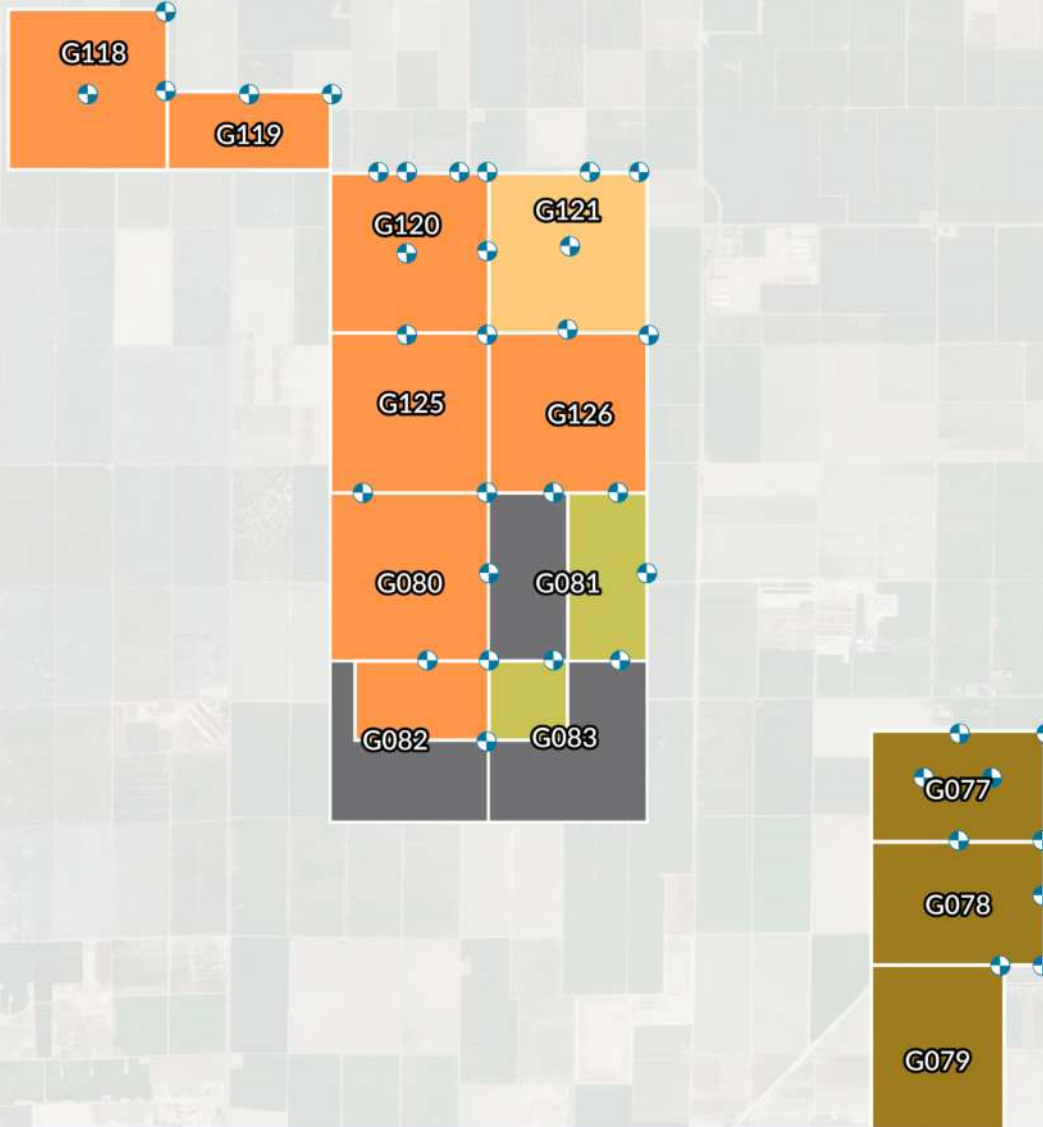
MAP OVERVIEW

LAND GROUP	PRICE	PER ACRE PRICE
6 WEST HWY 145 RANCH	\$28,731,450	\$15,000



LAND GROUP 6: WEST HWY 145 RANCH CROP MAP*

*Subject lines are approximate, not to scale



KEY

-  YOUNG PEACH
-  MATURE PEACH
-  MATURE NECTARINE
-  ALMONDS
-  OPEN LAND
-  PUMP & WELL

*YOUNG = 2020 OR YOUNGER



LAND GROUP 6: WEST HIGHWAY 145 RANCH								
RANCH #	FARMABLE ACRES	ASSESSED ACRES	PLANT DATE	CROP	VARIETY	DISTRICT	APN	WELL(s)
G077, G078 & G079						No	035-401-285, & 035-020-285	(5) 100HP Turbine, & (1) 75HP Turbine
G077A	65.09		2014	Almonds	50% Monterey / Nonpareil	No		
G077B	64.09		2014	Almonds	50% Monterey / Nonpareil	No		
G078A	66.68		2014	Almonds	50% Monterey / Nonpareil	No		
G078B	65.29		2014	Almonds	50% Monterey / Nonpareil	No		
G079A	90.57		2014	Almonds	50% Monterey / Nonpareil	No		
G079B	51.31		2014	Almonds	50% Nonpareil / 25% Aldrich / Wood Colony	No		
TOTALS	403.03	406.36						(6) WELLS
G080, G081, G082 & G083						No	030-050-58s	(7)75HP Turbine, & (3)100HP Turbine
G080A	81.49		2008	Peach	Prima Peach 23	No		
G080B	79.74		2008	Peach	Prima Peach 20	No		
G081A	82.14			Open Land		No		
G081B	79.13		2012	Nectarines	Honey Blaze	No		
G082A1	20.34		2008	Peach	Prima Gattie 08	No		
G082A2	61.64			Open Land		No		
G082B1	39.05		2008	Peach	Prima Peach 15	No		
G082B2	39.26			Open Land		No		
G083A1	39.48		2018	Nectarines	Prima Diamond 7	No		
G083A2	35.16			Open Land		No		
G083A3	2.97		2018	Buffer Zone		No		
G083B1	38.43		2013	Peach	Prima Peach 20	No		
G083B2	29.96			Open Land		No		
G083B3	1.15		2013	Buffer Zone		No		
TOTALS	629.94	639.96						(10) WELLS

NOTE: * = CERTIFIED ORGANIC



LAND GROUP 6: WEST HIGHWAY 145 RANCH

RANCH #	FARMABLE ACRES	ASSESSED ACRES	PLANT DATE	CROP	VARIETY	DISTRICT	APN	WELL(s)
G120, G121, G125 & G126						No	020-060-64S	(6) 75HP Turbine, & (5) 100HP Turbine
G120A1	18.87		2009	White Peach	Sierra Snow	No		
G120A2	19.06		2009	White Peach	Snow Giant	No		
G120B1	18.81		2009	White Peach	Ice Princess	No		
G120B2	18.92		2009	White Peach	Snow Princess	No		
G120C	38.6		2009	Nectarine	Prima Diamond 19	No		
G120D	38.43		2009	Peach	Prima Gattie 08	No		
G121A	38.37		2021	Peach	Supec26	No		
G121B	38.62		2006	Peach	Prima Peach 13	No		
G121C	37.03		2021	Peach	Supec26	No		
G121D	39.2		2006	Nectarine	Prima Diamond 19	No		
G125A	77.13		2009	Peach	Prima Peach 20	No		
G125B	76.77		2009	Nectarine	Prima Diamond 19	No		
G126A	78.06		2016	Peach	Prima Peach 15	No		
G126B	77.98		2016	Peach	Prima Peach 18	No		
TOTALS	618.85	632.69						(11) WELLS
G118 & G119						No	020-060-59s	(3) 75HP Turbine, & (2) 100HP Turbine
G118A	39.28		2010	Peach	Autumn Burst	No		
G118B1	19.57		2010	Peach	Prima Peach 23	No		
G118B2	19.1		2010	Peach	Autumn Burst	No		
G118C	38.53		2010	Peach	Prima Gattie 10	No		
G118D	38.18		2010	Nectarine	Prima Diamond 24	No		
G119A	39.14		2010	Peach	Prima Peach 23	No		
G119B	38.61		2010	Nectarine	Honey Blaze	No		
TOTALS	232.41	236.42						(5) WELLS

NOTE: * = CERTIFIED ORGANIC





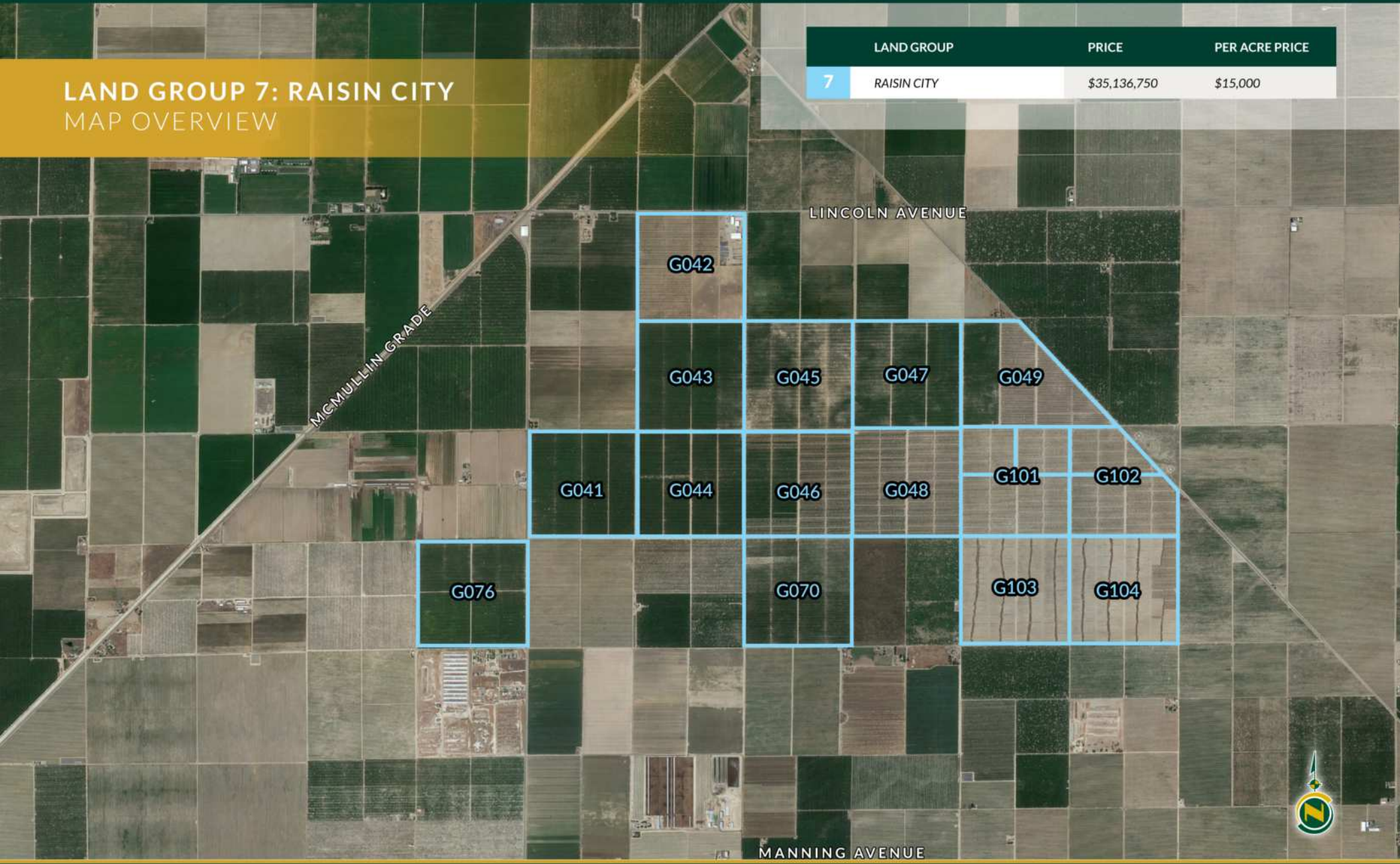
LAND GROUP 7

RAISIN CITY



LAND GROUP 7: RAISIN CITY
MAP OVERVIEW

LAND GROUP	PRICE	PER ACRE PRICE
7 RAISIN CITY	\$35,136,750	\$15,000



LAND GROUP 7: RAISIN CITY CROP MAP*

**Subject lines are approximate, not to scale*



- KEY**
-  YOUNG PEACH
 -  YOUNG NECTARINE
 -  ALMONDS
 -  OPEN LAND
 -  PUMP & WELL

*YOUNG = 2020 OR YOUNGER



LAND GROUP 7: RAISIN CITY								
RANCH #	FARMABLE ACRES	ASSESSED ACRES	PLANT DATE	CROP	VARIETY	DISTRICT	APN	WELL(s)
G041 & G044						RCWD - does not provide surface water	035-070-04S	(2) 100HP Turbine, & (2) 75HP Turbine
G041A	75.83		2022	Nectarine	August Fire			
G041B	74.1		2022	Nectarine	August Bright			
G044A	78.34		2022	Nectarine	Prima Diamond 19			
G044B	75.62		2022	Nectarine	Sweet Flare 29			
TOTALS	303.89	307.61						(4) WELLS
G042 & G043						RCWD - does not provide surface water	035-030-41S	(3) 100HP Turbine, (2) 75HP Turbine, (1) 30HP Submersible, & (1) 125HP Submersible
G042A	38.42		2022	Peach	Autumn Burst			
G042B	18.1		2022	Peach	Autumn Burst			
G042C	38.31		2022	Peach	Prima Gattie 10			
G042D	37.31		2022	Peach	Prima Gattie 10			
G043A	77.92		2022	Peach	Prima Gattie 08			
G043B	76.62		2022	Peach	Prima Gattie 08			
TOTALS	286.68	322.42						(7) WELLS
G045						RCWD - does not provide SW	035-030-54S	(1) 75HP Turbine, & (1) 100HP Turbine
G045A	76.47		2022	Peach	Prima Gattie 08			
G045B	78.28		2022	Nectarine	September Bright			
TOTALS	154.75	162.2						(2) WELLS

NOTE: * = CERTIFIED ORGANIC



LAND GROUP 7: RAISIN CITY								
RANCH #	FARMABLE ACRES	ASSESSED ACRES	PLANT DATE	CROP	VARIETY	DISTRICT	APN	WELL(s)
G046 & G048						RCWD - does not provide surface water	035-070-06s	(2) 100HP Turbine, & (4) 75HP Turbine
G046A	77.47		2022	Nectarine	Honeylicious			
G046B	72.96		2022	Nectarine	Grand Bright			
G048A1	70.49		2022	Peach	BP4 (B1.034)			
G048A2	6.66		2022	Peach	Prima Peach 23			
G048B	77.74		2022	Peach	August Flame			
TOTALS	305.32	307.54						(6) WELLS
G047						RCWD - does not provide surface water	035-030-53S	(1) 40HP Turbine, (1) 100HP Turbine, & (1) 50HP Turbine
G047A	51.89		2022	White Nectarine	V5.056.118			
G047B	49.4		2022	White Nectarine	V5.055.119			
G047C	51.1		2022	White Peach	Snow Princess			
TOTALS	152.39	162.2						
G049						RCWD - does not provide surface water	035-040-21s	(2) 75HP Turbine, & (1) 50HP Turbine
G049A	51.89		2022	White Peach	Rich Snow			
G049B	48		2022	White Peach	Spring Snow			
G049C	44.28		2022	White Peach	Snow Giant			
TOTALS	144.17	155.9						(3) WELLS
G070						RCWD - does not provide surface water	035-070-36S	Flood irrigation system w/ underground pipeline concrete flood valves
G070A	74.9			Open Land	Almonds were removed at the end of 2021			
G070B	75.7			Open Land				
TOTALS	150.6	153.62						

NOTE: * = CERTIFIED ORGANIC



LAND GROUP 7: RAISIN CITY								
RANCH #	FARMABLE ACRES	ASSESSED ACRES	PLANT DATE	CROP	VARIETY	DISTRICT	APN	WELL(s)
G076						RCWD - does not provide surface water	035-070-19S	(1) 50HP Turbine & (2) 100HP Turbine
G076A	35.9		2014	Almonds	50% Nonpareil, 25% Aldrich / Wood Colony			
G076B	36.6		2014	Almonds	50% Nonpareil, 25% Aldrich / Wood Colony			
G076C	39.7		2014	Almonds	50% Nonpareil, 25% Aldrich / Wood Colony			
G076D	40.6		2014	Almonds	50% Nonpareil, 25% Aldrich / Wood Colony			
TOTALS	152.8	155.96						(3) WELLS
G101, G102, G103 & G104						RCWD - does not provide surface water	035-330-39S, 035-330-40S, & 035-330-41S	(4) 100HP Turbine, (2) 150HP Turbine, & (1) 125HP Turbine
G101A	76.52		2022	Peach	Summer Flame 29			
G101B	73.29		2022	Peach	Sierra Rich			
G102A	77.42		2022	White Nectarine	Majestic Pearl			
G102B	49.99		2022	White Nectarine	Snow Pearl			
G103A	79.69		2022	Peach	Summer Flame 34			
G103B	77.45		2022	Peach	Rich Lady			
G104A	78		2022	Peach	Spring Flame 22			
G104B	77.37		2022	Peach	Spring Flame 22			
TOTALS	589.73	615						(7) WELLS

NOTE: * = CERTIFIED ORGANIC



EXCLUSIVELY PRESENTED BY



FRESNO

7480 N. Palm Ave, Ste 101
Fresno, CA 93711
559.432.6200

VISALIA

3447 S. Demaree St
Visalia, CA 93277
559.732.7300

BAKERSFIELD

4900 California Ave, Suite 210B
Bakersfield, CA 93309
661.334.2777

www.pearsonrealty.com

CA DRE #00020875

TABLE OF
CONTENTS

