

FOR SALE



**PEARSON
REALTY**

AGRICULTURAL PROPERTIES
A Tradition in Trust Since 1919

Oro Verde Pistachios (Field 41-05)



**19.46± Assessed Acres
Madera County, California**

- Producing Pistachios
- Madera Water District
- Mini-Sprinkler Irrigation

**Exclusively Presented By:
Pearson Realty**



CALIFORNIA'S LARGEST AG BROKERAGE FIRM

www.pearsonrealty.com

CA DRE #00020875



Oro Verde Pistachios (Field 41-05)

19.46± Assessed Acres

\$447,580.00
(\$23,000 per acre)

LOCATION:

The north side of Avenue 21, 1/2 mile east of Road 27. Approximately 2± miles north of the city of Madera, Madera County, CA.

LEGAL:

19.46± assessed acres located in the W 1/2 of the SW 1/4 of the SE 1/4 of Section 18, T10S, R18E, M.D.B.&M.
Madera County APN: 031-071-008.

ZONING:

ARV-20, Agriculture Rural Valley with a 20 acre minimum parcel size.

PLANTINGS:

A mature producing pistachio orchard originally planted in the 1970's with Kerman variety on Atlantica Rootstock. Since then, replants have been Kerman on UCB-1 Rootstock.

WATER:

Madera Water District.
Mini-sprinkler irrigation.

SOILS:

Cometa sandy loams, 3-8% slopes.
Atwater loamy sand, moderately deep and very deep over hardpan, 3-8% slopes.

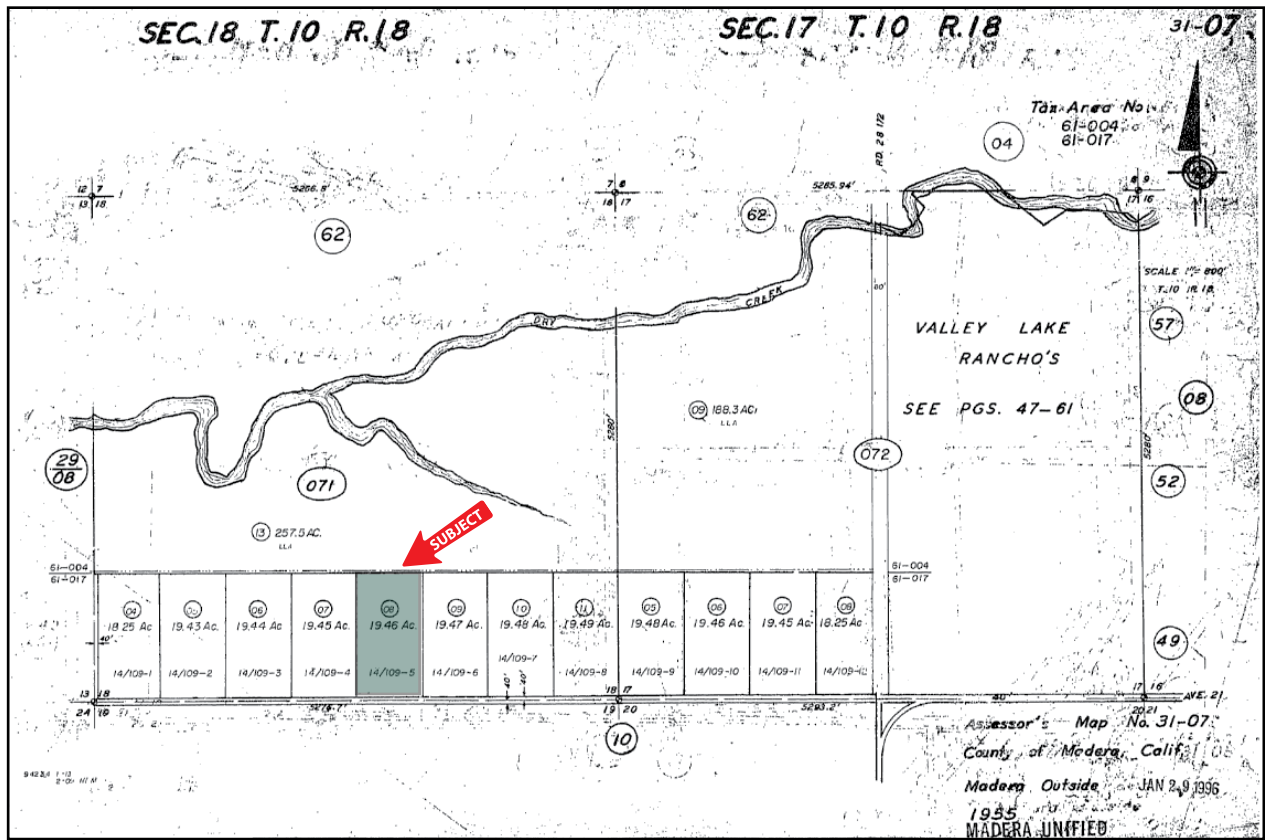
**BUILDINGS/
IMPROVEMENTS:**

None.

PRICE/TERMS:

\$447,580 cash at the close of escrow. Buyer to reimburse Seller for cultural costs incurred toward the 2021 season at the close of escrow.

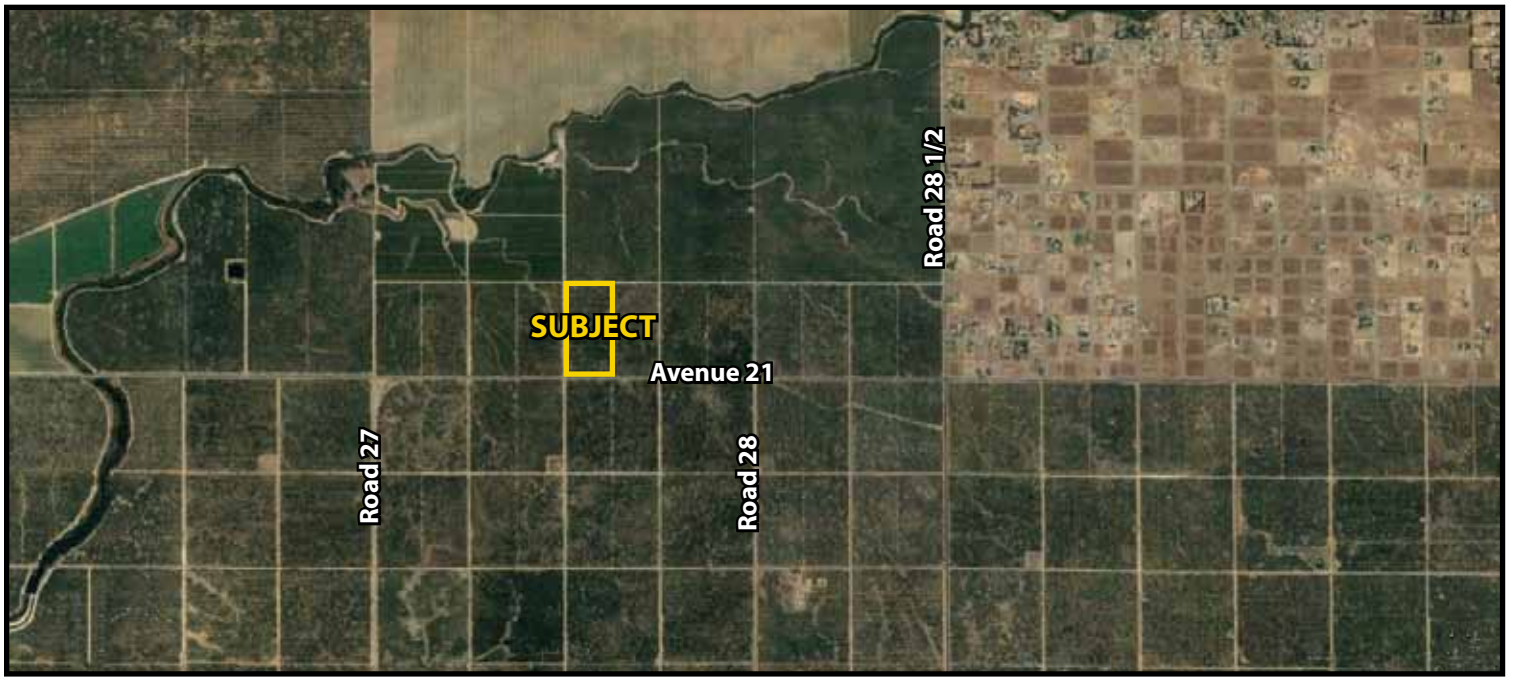
ASSESSOR'S PARCEL MAP



PROPERTY PHOTO



LOCATION MAPS



Water Disclosure: The Sustainable Groundwater Management Act (SGMA) was passed in 2014, requiring groundwater basins to be sustainable by 2040. SGMA requires a Groundwater Sustainability Plan (GSP) by 2020. SGMA may limit the amount of well water that may be pumped from underground aquifers. Buyers and tenants to a real estate transaction should consult with their own water attorney; hydrologist; geologist; civil engineer; or other environmental professional. Additional information is available at: California Department of Water Resources Sustainable Groundwater Management Act Portal - <https://sgma.water.ca.gov/portal/> Telephone Number: (916) 653-5791

Offices Serving The Central Valley

FRESNO

7480 N Palm Ave, Ste 101
Fresno, CA 93711
559.432.6200

VISALIA

3447 S Demaree Street
Visalia, CA 93277
559.732.7300

BAKERSFIELD

4900 California Ave, Ste 210 B
Bakersfield, CA 93309
661.334.2777



**Download Our
Mobile App!**

pearsonrealty.com/mobileapp

Download on the
App Store

GET IT ON
Google Play

We believe the information contained herein to be correct. It is obtained from sources which we regard as reliable, but we assume no liability for errors or omissions. Policy on cooperation: All real estate licensees are invited to offer this property to prospective buyers. Do not offer to other agents without prior approval.