

107.42± ACRES AVAILABLE AVAILABLE FOR SALE

NWC of Shaw & Academy Avenues - Clovis, California



PROPERTY INFORMATION

Available Space:	107.42± acres
Asking Price:	\$1,879,850 (\$17,500/acre)
Parcel Number:	308-300-19, 20; 308-060-59, 60, 61
Zoning:	RR or RES, Potential Sub

PROPERTY DESCRIPTION

Property consists of 107.42± acres of vacant land, divided into 5 separate parcels ranging from 17.85± acres to 31.45± acres. Currently property is being utilized as pasture. Property has several wells and a portion is being leased for horse grazing. This property is NOT in the Williamson Act.

For Additional Information Please Contact:

Jeff Wolpert
Senior Vice President - Land Division
Newmark Pearson Commercial
559.447.6295 - jwolpert@pearsonrealty.com
CA DRE #01487371

Bill Enns
Senior Vice President - Ag Division
Pearson Realty
559.447.6238 - benns@pearsonrealty.com
CA DRE #01335282



FRESNO OFFICE 7480 N Palm Ave #101, Fresno CA 93711 559.432.6200
VISALIA OFFICE 3447 S Demaree St, Visalia CA 93277 559.732.7300

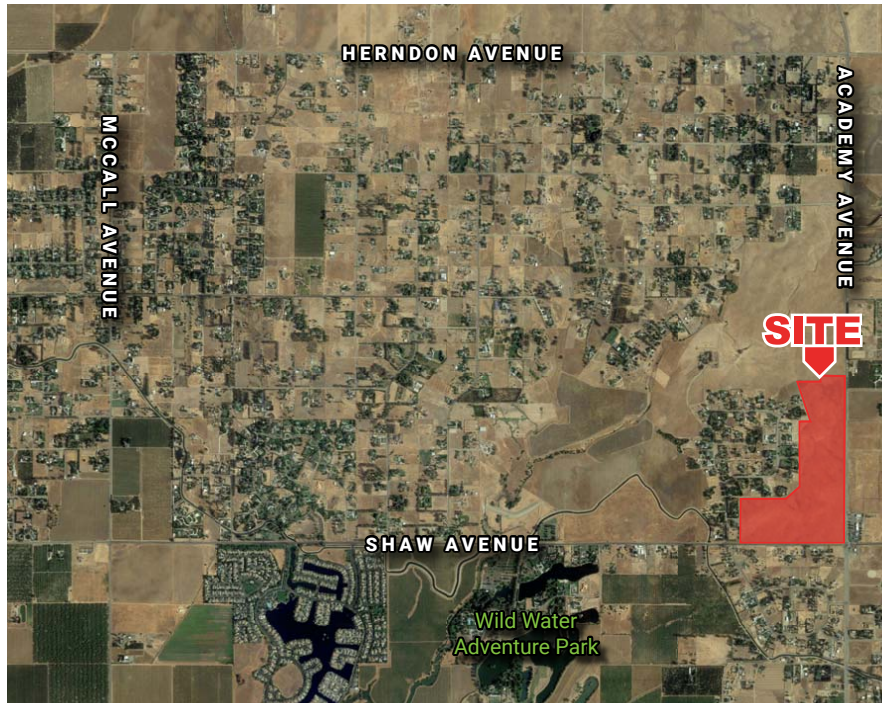
Independently Owned and Operated
www.pearsonrealty.com | www.newmarkpearson.com

Procuring broker shall only be entitled to a commission, calculated in accordance with the rates approved by our principal only if such procuring broker executes a brokerage agreement acceptable to us and our principal and the conditions as set forth in the brokerage agreement are fully and unconditionally satisfied. Although all information furnished regarding property for sale, rental, or financing is from sources deemed reliable, such information has not been verified and no express representation is made nor is any to be implied as to the accuracy thereof and it is submitted subject to errors, omissions, change of price, rental or other conditions, prior sale, lease or financing, or withdrawal without notice and to any special conditions imposed by our principal.

NWC OF SHAW & ACADEMY AVENUES - CLOVIS, CA

AVAILABLE FOR SALE

LOCATION MAP



LOCATION DESCRIPTION

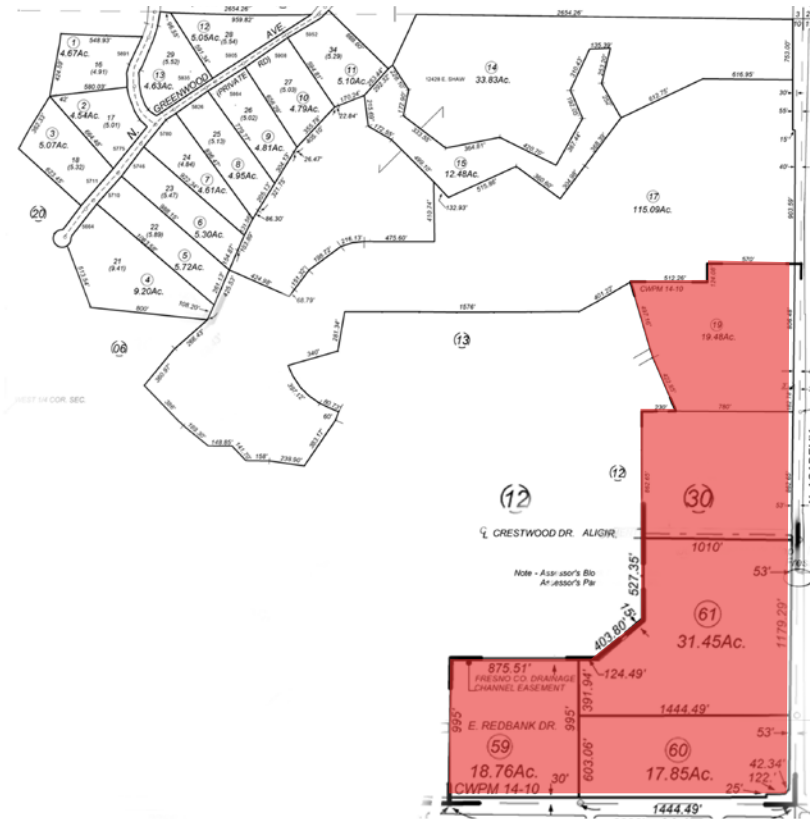
Property is located on the North West Corner of Shaw and Academy Avenue. Within the Sphere of Influence of the City of Clovis. Property is adjacent to the Cumorah Knolls Subdivision.

For Additional Information Please Contact:

Jeff Wolpert
Newmark Pearson Commercial
Senior Vice President - Land Division
559.447.6295 - jwolpert@pearsonrealty.com
CA DRE #01487371

Bill Enns
Pearson Realty
Senior Vice President - Ag Division
559.447.6238 - benns@pearsonrealty.com
CA DRE #01335282

ASSESSOR'S PARCEL MAP: 308-300-19, 20; 308-060-59, 60, 61



FRESNO OFFICE 7480 N Palm Ave #101, Fresno CA 93711 559.432.6200
VISALIA OFFICE 3447 S Demaree St, Visalia CA 93277 559.732.7300

Independently Owned and Operated
www.pearsonrealty.com | www.newmarkpearson.com

Procuring broker shall only be entitled to a commission, calculated in accordance with the rates approved by our principal only if such procuring broker executes a brokerage agreement acceptable to us and our principal and the conditions as set forth in the brokerage agreement are fully and unconditionally satisfied. Although all information furnished regarding property for sale, rental, or financing is from sources deemed reliable, such information has not been verified and no express representation is made nor is any to be implied as to the accuracy thereof and it is submitted subject to errors, omissions, change of price, rental or other conditions, prior sale, lease or financing, or withdrawal without notice and to any special conditions imposed by our principal.