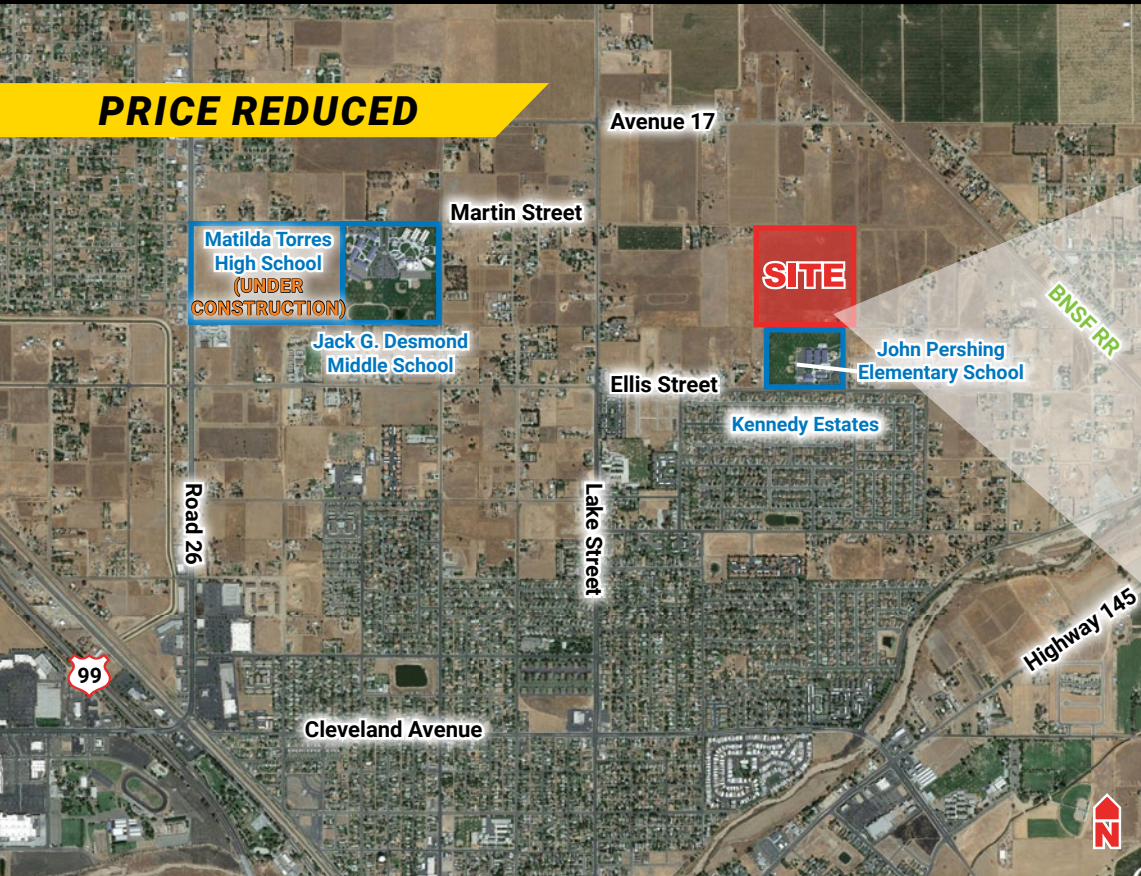


# DEVELOPMENT LAND AVAILABLE FOR SALE

27561 & 27565 Ellis Street - Madera, California

**PRICE REDUCED**



**39.97± ACRES**

**Price: ~~\$2,000,000~~ \$1,600,000 (\$40,000/acre)**

Located just north of Ellis Street, at Ericho Drive.



## HIGHLIGHTS

- ◆ Sewer & water to property
- ◆ Across the street from Madera City Limits
- ◆ Growth area
- ◆ Within Madera Sphere of Influence

For Additional Information Please Contact:

**Jeff Wolpert**

Senior Vice President - Land Division  
Newmark Pearson Commercial  
559.447.6295 - jwolpert@pearsonrealty.com  
DRE# 01487371

**Bill Enns**

Senior Vice President - Farm Land Division  
Pearson Realty  
559.447.6238 - benns@pearsonrealty.com  
DRE# 01335282



FRESNO OFFICE 7480 N Palm Ave #101, Fresno CA 93711 559.432.6200  
VISALIA OFFICE 3447 S Demaree St, Visalia CA 93277 559.732.7300

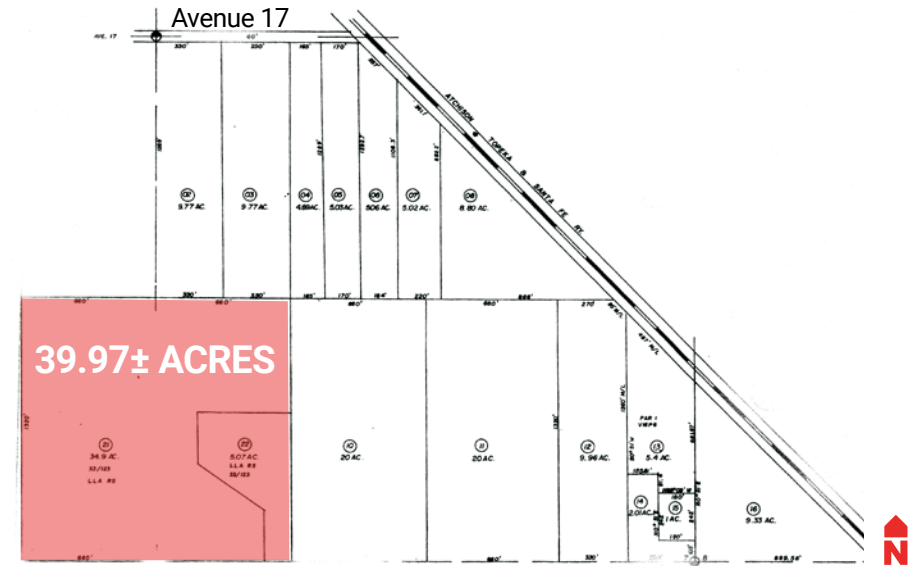
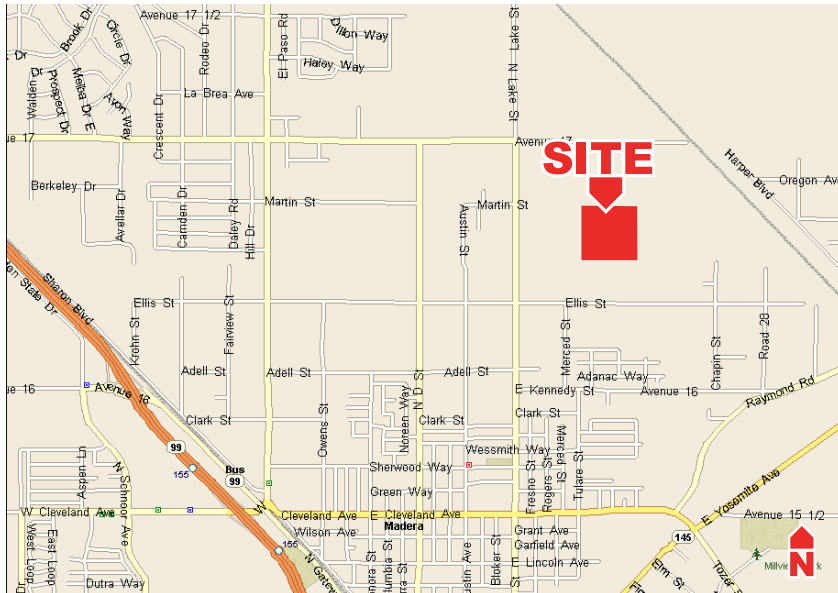
Independently Owned and Operated  
www.pearsonrealty.com | www.newmarkpearson.com

Procuring broker shall only be entitled to a commission, calculated in accordance with the rates approved by our principal only if such procuring broker executes a brokerage agreement acceptable to us and our principal and the conditions as set forth in the brokerage agreement are fully and unconditionally satisfied. Although all information furnished regarding property for sale, rental, or financing is from sources deemed reliable, such information has not been verified and no express representation is made nor is any to be implied as to the accuracy thereof and it is submitted subject to errors, omissions, change of price, rental or other conditions, prior sale, lease or financing, or withdrawal without notice and to any special conditions imposed by our principal.

# 27561 & 27565 ELLIS STREET - MADERA, CA

## AVAILABLE FOR SALE

### LOCATION MAP AND ASSESSOR'S PARCEL MAP



**For Additional Information Please Contact:**

**Jeff Wolpert**  
 Newmark Pearson Commercial  
 Senior Vice President - Land Division  
 559.447.6295 - [jwolpert@pearsonrealty.com](mailto:jwolpert@pearsonrealty.com)  
 DRE# 01487371

**Bill Enns**  
 Pearson Realty  
 Senior Vice President - Farm Land Division  
 559.447.6238 - [benns@pearsonrealty.com](mailto:benns@pearsonrealty.com)  
 DRE# 01335282



FRESNO OFFICE 7480 N Palm Ave #101, Fresno CA 93711 559.432.6200  
 VISALIA OFFICE 3447 S Demaree St, Visalia CA 93277 559.732.7300

Independently Owned and Operated  
[www.pearsonrealty.com](http://www.pearsonrealty.com) | [www.newmarkpearson.com](http://www.newmarkpearson.com)

Procuring broker shall only be entitled to a commission, calculated in accordance with the rates approved by our principal only if such procuring broker executes a brokerage agreement acceptable to us and our principal and the conditions as set forth in the brokerage agreement are fully and unconditionally satisfied. Although all information furnished regarding property for sale, rental, or financing is from sources deemed reliable, such information has not been verified and no express representation is made nor is any to be implied as to the accuracy thereof and it is submitted subject to errors, omissions, change of price, rental or other conditions, prior sale, lease or financing, or withdrawal without notice and to any special conditions imposed by our principal.