

FOR SALE



**PEARSON
REALTY**

AGRICULTURAL PROPERTIES
A Tradition in Trust Since 1919

Lake Success Hillside Ranch



**33.23± Assessed Acres
Tulare County, California**

- Scenic Views
- Potential Home Site
- Highway Access

**Exclusively Presented By:
Pearson Realty**



CALIFORNIA'S LARGEST AG BROKERAGE FIRM

www.pearsonrealty.com

CA BRE #00020875



Lake Success Hillside Ranch

33.23± Assessed Acres

\$125,000

DESCRIPTION:

Available for sale is a 33.23± acre parcel with scenic views of Lake Success and the distant foothills from the southeast. This land would be a great home site or a small horse grazing ranch. There is a barbed wire fence bordering the property and a metal gate near the southwest corner that grants access from the highway.

LOCATION:

The property is located alongside Highway 190 approximately two and a half miles east of the intersection at Road 284.

LEGAL:

Tulare County APN: 284-030-006
Zoning is AF – Foothill Agricultural Zone. The property is not under the Williamson Act Contract.

SOILS:

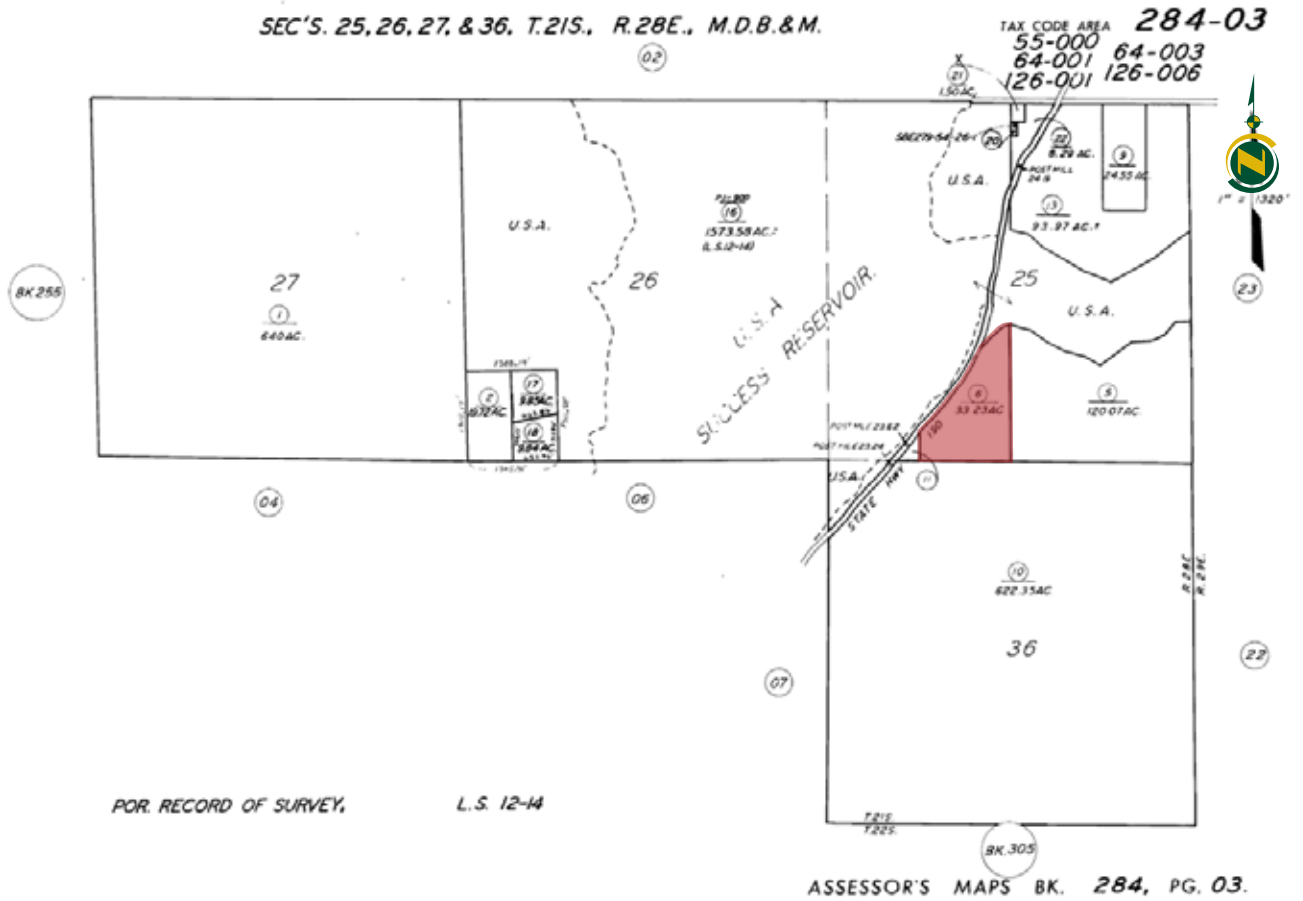
Predominantly: Cibo-Rock outcrop complex, 15 to 50% slopes.
Remainder: Las Posas-Rock outcrop complex, 9 to 50% slopes.

PRICE/TERMS:

The asking price is \$125,000 cash.

ASSESSOR'S PARCEL MAP

SEC'S. 25, 26, 27, & 36, T.21S., R.28E., M.D.B.&M.



AERIAL MAP



LOCATION MAP



REGIONAL MAP



We believe the information contained herein to be correct. It is obtained from sources which we regard as reliable, but we assume no liability for errors or omissions. Policy on cooperation: All real estate licensees are invited to offer this property to prospective buyers. Do not offer to other agents without prior approval.

Offices Serving The Central Valley

FRESNO
7480 N Palm Ave, Ste 101
Fresno, CA 93711
559.432.6200

VISALIA
3447 S Demaree Street
Visalia, CA 93277
559.732.7300

BAKERSFIELD
1801 Oak Street, Ste 159
Bakersfield, CA 93301
661.334.2777



**Download Our
Mobile App!**

<http://snap.vu/oueq>

