

**FOR SALE**



**PEARSON  
REALTY**  
AGRICULTURAL PROPERTIES  
*A Tradition in Trust Since 1919*

# Lake Success Foothill Ranch



**392± Assessed Acres  
Tulare County, California**

- Livestock Water Wells
- Quick Access to Highway 190
- Scenic Views

**Exclusively Presented By:  
Pearson Realty**



**CALIFORNIA'S LARGEST AG BROKERAGE FIRM**

[www.pearsonrealty.com](http://www.pearsonrealty.com)  
CA BRE #00020875



# Lake Success Foothill Ranch

**392± Assessed Acres**

**\$800,000**

**DESCRIPTION:**

This property is a multi-generational, working cattle ranch that overlooks Lake Success to the east and Bartlett Park to the south. This ranch is fully fenced for cattle and has two wells located on-site.

This foothill ranch serves as a weekend getaway with dynamic opportunities for outdoor recreation, a retreat location, beautiful homesites, and space for hiking and biking. Lake Success offers quick access to aquatic activities such as fishing, boating, water skiing, and the location boasts panoramic views of the Sierra Nevada mountains.

**LOCATION:**

The ranch is located east of Porterville and west of the dam at Lake Success, California. Avenue 146 borders the south side of the property, which is quickly accessed by Highway 190.

**LEGAL:**

Tulare County APN: 284-040-005 & 284-050-005.  
The property is under the Williamson Act Contract.

**WATER:**

The ranch offers two on-site livestock wells. One well is powered by a small solar pump.

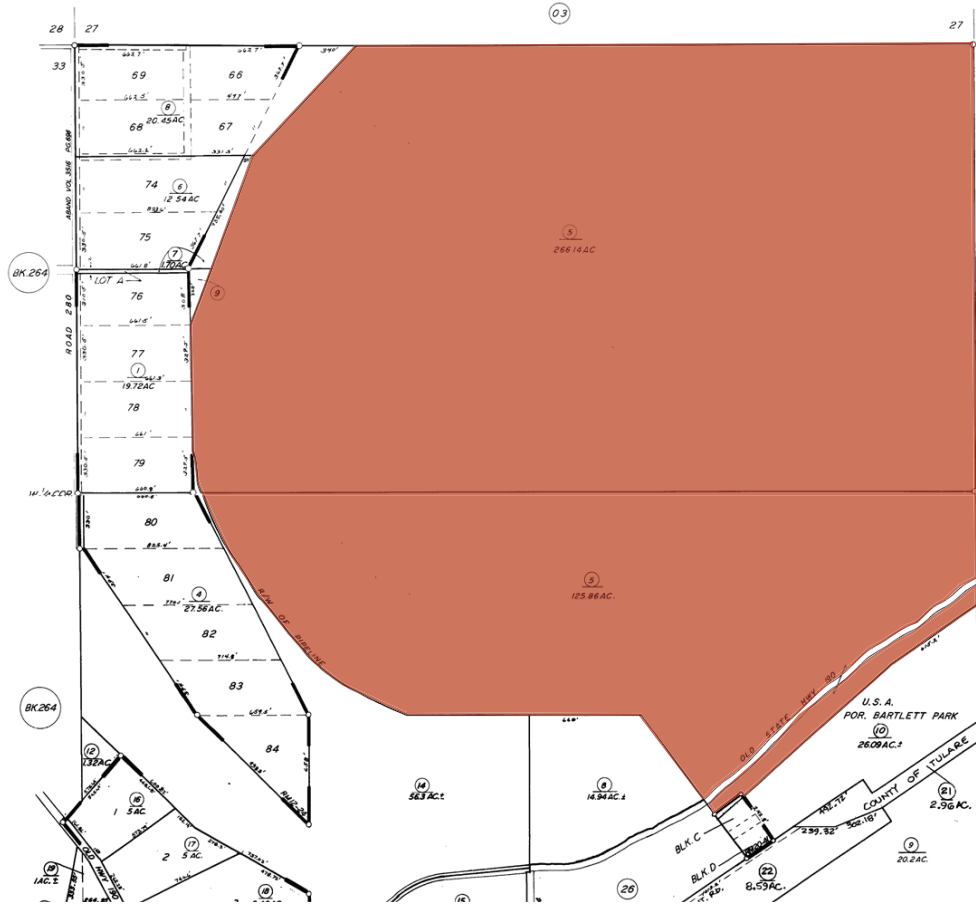
**SOILS:**

Cibo-Rock outcrop complex, 15 to 50% slopes.  
Greenfield sandy loam, 0 to 2% slopes.  
Las Posas-Rock outcrop complex, 9 to 50% slopes.  
Porterville cobbly clay, 2 to 15% slopes.  
San Joaquin loam, 2 to 9% slopes.  
Tujunga sand.

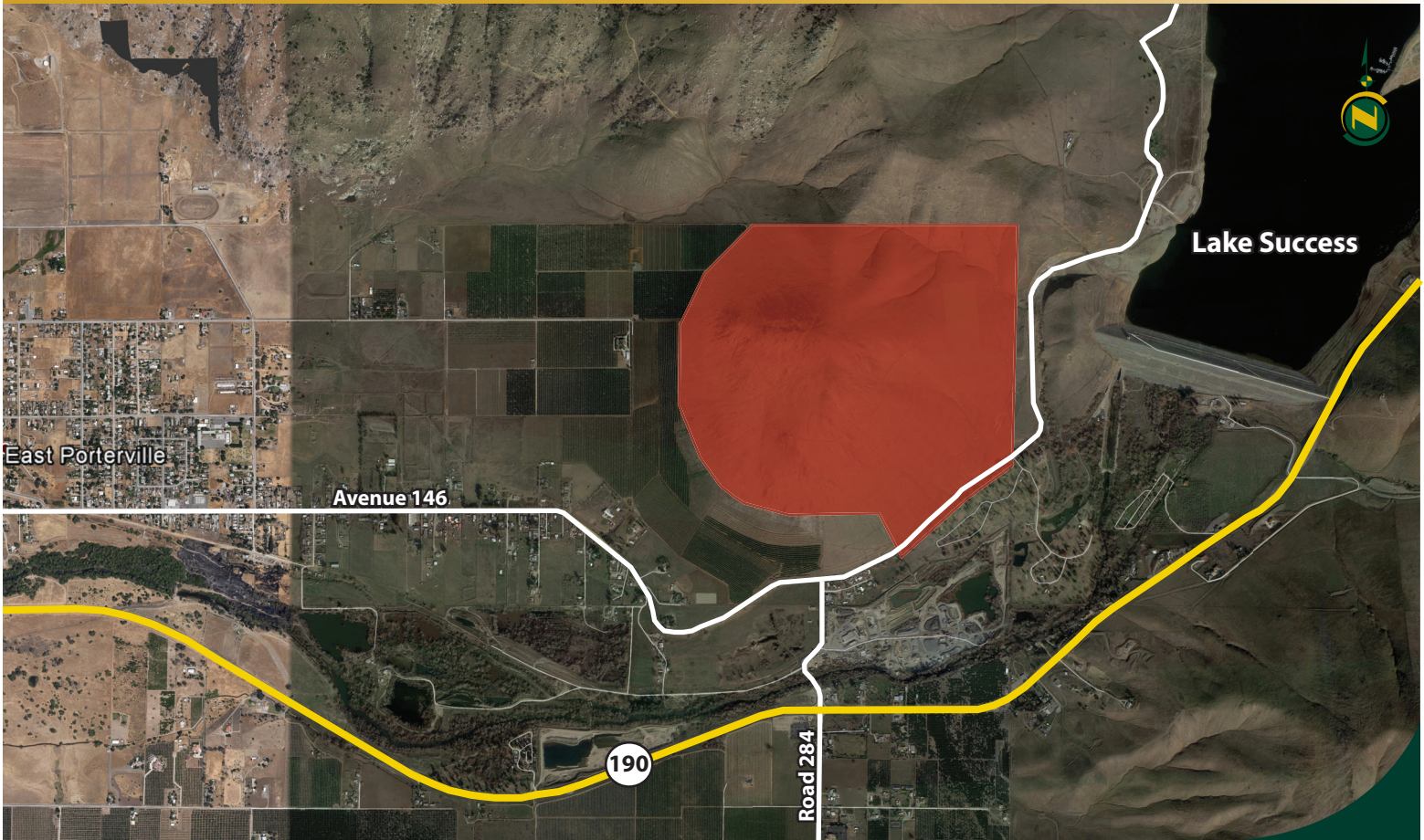
**PRICE/TERMS:**

The asking price is \$800,000. Seller financing is available with 35% down.

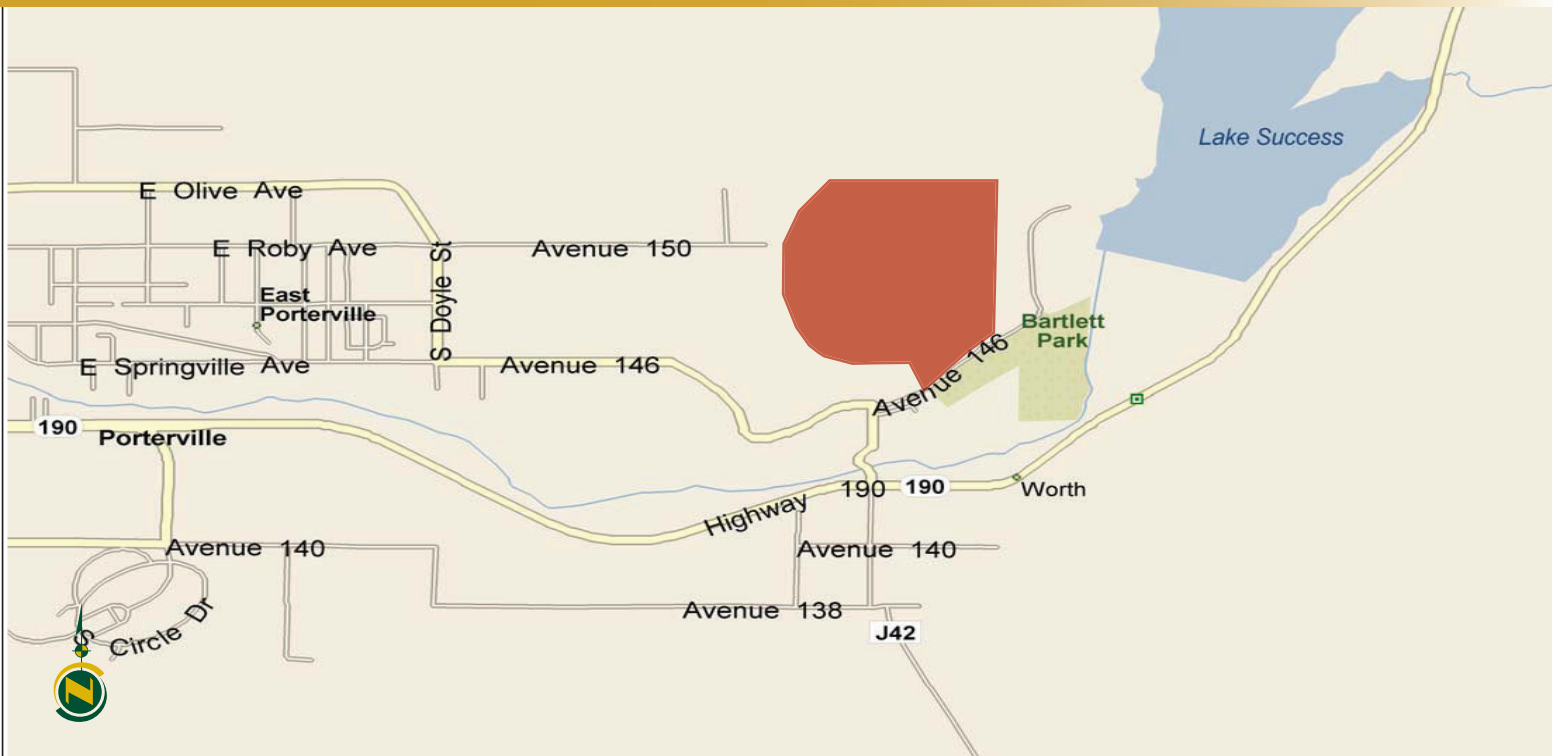
# ASSESSOR'S PARCEL MAP



# AERIAL MAP



# LOCATION MAP



# REGIONAL MAP



**Water Disclosure:** The Sustainable Groundwater Management Act (SGMA) was passed in 2014, requiring groundwater basins to be sustainable by 2040. SGMA requires a Groundwater Sustainability Plan (GSP) by 2020. SGMA may limit the amount of well water that may be pumped from underground aquifers. Buyers and tenants to a real estate transaction should consult with their own water attorney; hydrologist; geologist; civil engineer; or other environmental professional. Additional information is available at: California Department of Water Resources Sustainable Groundwater Management Act Portal - <https://sgma.water.ca.gov/portal/> Telephone Number: (916) 653-5791

## Offices Serving The Central Valley

### FRESNO

7480 N Palm Ave, Ste 101  
Fresno, CA 93711  
559.432.6200

### VISALIA

3447 S Demaree Street  
Visalia, CA 93277  
559.732.7300

### BAKERSFIELD

1801 Oak Street, Ste 159  
Bakersfield, CA 93301  
661.334.2777



**Download Our  
Mobile App!**

<http://snap.vu/ueq>



We believe the information contained herein to be correct. It is obtained from sources which we regard as reliable, but we assume no liability for errors or omissions. Policy on cooperation: All real estate licensees are invited to offer this property to prospective buyers. Do not offer to other agents without prior approval.