



**PEARSON
REALTY**
AGRICULTURAL PROPERTIES
A Tradition in Trust Since 1919

FOR SALE

Residential Vacant Lot Zoned RM3

DESCRIPTION: This property is 6,225± SF (0.143± ac.) of residential vacant land. Potential for a duplex with several multi-unit properties in the area, permits can be obtained from the Hanford City Planning Department. The lot has alley access, utilities and is walking distance from Downtown Hanford with a walkability score of 2.5 out of 5.

LOCATION: 426 E. Elm Street, Hanford CA. The property is near the cross street of White Street.

LEGAL: Property is zoned RM3.

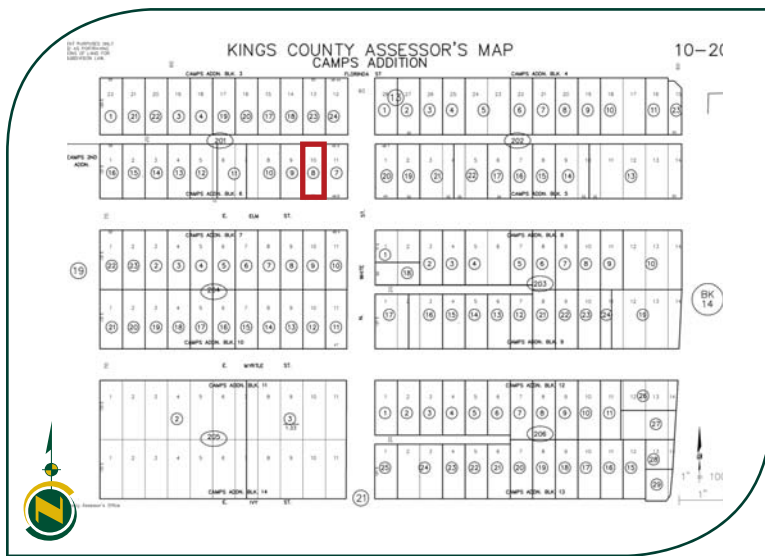
APN: 010-201-008.

PRICE: \$24,950 cash.



**0.143± Acres
Kings County, California**

**Exclusively Presented By:
Pearson Realty**



CALIFORNIA'S LARGEST AG BROKERAGE FIRM

www.pearsonrealty.com

CA BRE #00020875

This is a detailed street map of the Hanford area. The map shows a grid of streets with labels such as W Grangeville Blvd, W Lacey Blvd, E Lacey Blvd, and various numbered streets (e.g., W 1st St to W 10th St, E 1st St to E 10th St). A red square marks the location of the Hanford Police Department at the intersection of E Elm St and N 11th Ave. The map also shows major highways 85, 87, and 198, and landmarks like Coe Park and Pitco. A compass rose is visible in the bottom left corner.

REGIONAL MAP



FRESNO 7480 N. Palm Ave, Ste 101
Fresno, CA 93711
559.432.6200

VISALIA 3447 S. Demaree Street
Visalia, CA 93277
559.732.7300

BAKERSFIELD 1801 Oak Street, Ste 159
Bakersfield, CA 93301
661.334.2777



PEARSON
REALTY
AGRICULTURAL PROPERTIES
A Tradition in Trust Since 1919

We believe the information contained herein to be correct. It is obtained from sources which we regard as reliable, but we assume no liability for errors or omissions. Policy on cooperation: All real estate licensees are invited to offer this property to prospective buyers. Do not offer to other agents without prior approval.

