

# FOR SALE



**PEARSON  
REALTY**  
AGRICULTURAL PROPERTIES  
*A Tradition in Trust Since 1919*

## Residence - 62 Lemoore Avenue



### Lemoore Kings County, California

- Remodeled
- Walking Distance to Schools

**Exclusively Presented By:  
Pearson Realty**



**CALIFORNIA'S LARGEST AG BROKERAGE FIRM**

[www.pearsonrealty.com](http://www.pearsonrealty.com)  
CA BRE #00020875



## Residence - 62 Lemoore Avenue

**\$158,000**

### DESCRIPTION:

This property is a remodeled 1,000± square foot ranch style home. The house was built in 1916 and has 3 bedrooms and 2 bathrooms. Perfect for investor or first time buyers. Close to Lemoore High School, Lemoore Elementary School and Lemoore NAS.

### LOCATION:

The subject property is located at 62 Lemoore Avenue in the City Limits of Lemoore, approximately one half mile north of Highway 198 on Lemoore Avenue.

### LEGAL:

Kings County APN# 0020-131-032-000, single family residential.

### WATER/UTILITIES:

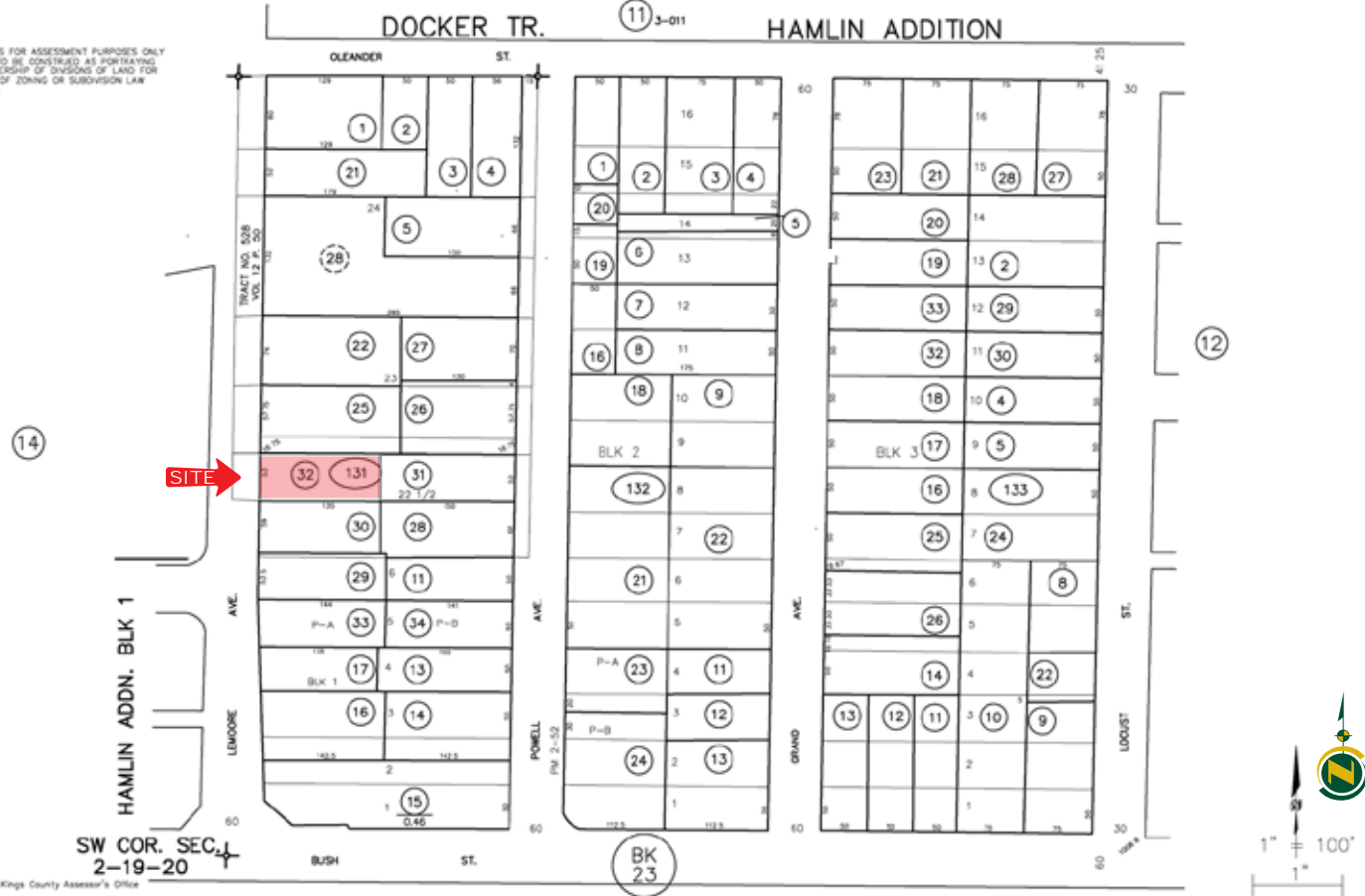
City.

### PRICE:

\$158,000, cash.



THIS MAP IS FOR ASSESSMENT PURPOSES ONLY  
IT IS NOT TO BE CONSTRUED AS REPRESENTING  
LEGAL OWNERSHIP OF DIVISIONS OF LAND FOR  
PURPOSES OF ZONING OR SUBDIVISION LAW  
JULY, 1998



## LOCATION MAP



## REGIONAL MAP



## Offices Serving The Central Valley

### FRESNO

7480 N. Palm Ave, Ste 101  
Fresno, CA 93711  
559.432.6200

### VISALIA

3447 S. Demaree Street  
Visalia, CA 93277  
559.732.7300

### BAKERSFIELD

1801 Oak Street, Ste 159  
Bakersfield, CA 93301  
661.334.2777



**PEARSON  
REALTY**  
AGRICULTURAL PROPERTIES  
*A Tradition in Trust Since 1919*

We believe the information contained herein to be correct. It is obtained from sources which we regard as reliable, but we assume no liability for errors or omissions. Policy on cooperation: All real estate licensees are invited to offer this property to prospective buyers. Do not offer to other agents without prior approval.

