

AVAILABLE FOR SALE

Development Land



39.97± ACRES

Price: \$2,000,000 (\$50,037/ acre)

Located just north of Ellis Street, at Ericho Drive.



Highlights

- ◆ Sewer & water to property
- ◆ Across the street from Madera City Limits
- ◆ Growth area
- ◆ Within City Sphere of Influence



For Additional Information Please Contact:

Jeff Wolpert

Vice President - Land Division
Newmark Grubb Pearson Commercial
559.447.6295 - jwolpert@pearsonrealty.com
CA BRE# 01487371

Bill Enns

Senior Vice President - Farm Land Division
Pearson Realty
559.447.6238 - benns@pearsonrealty.com
CA BRE# 01335282

27561 & 27565 Ellis Street

Madera, California

FRESNO OFFICE: 7480 N Palm Ave Suite 101 Fresno CA 93711, T 559.432.6200
VISALIA OFFICE: 3447 S Demaree St Visalia CA 93277, T 559.732.7300

www.pearsonrealty.com
Independently Owned and Operated

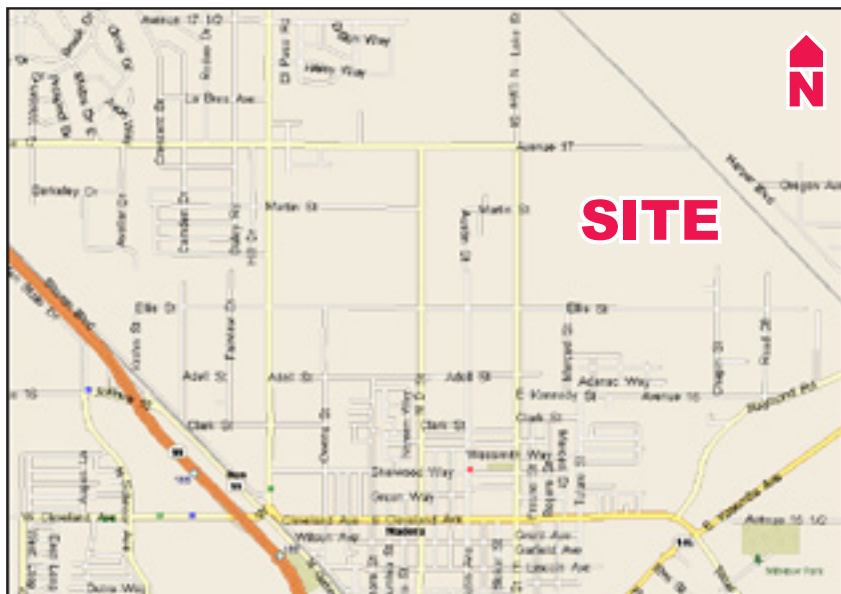
Procuring broker shall only be entitled to a commission, calculated in accordance with the rates approved by our principal only if such procuring broker executes a brokerage agreement acceptable to us and our principal and the conditions as set forth in the brokerage agreement are fully and unconditionally satisfied. Although all information furnished regarding property for sale, rental, or financing is from sources deemed reliable, such information has not been verified and no express representation is made nor is any to be implied as to the accuracy thereof and it is submitted subject to errors, omissions, change of price, rental or other conditions, prior sale, lease or financing, or withdrawal without notice and to any special conditions imposed by our principal.

AVAILABLE FOR SALE

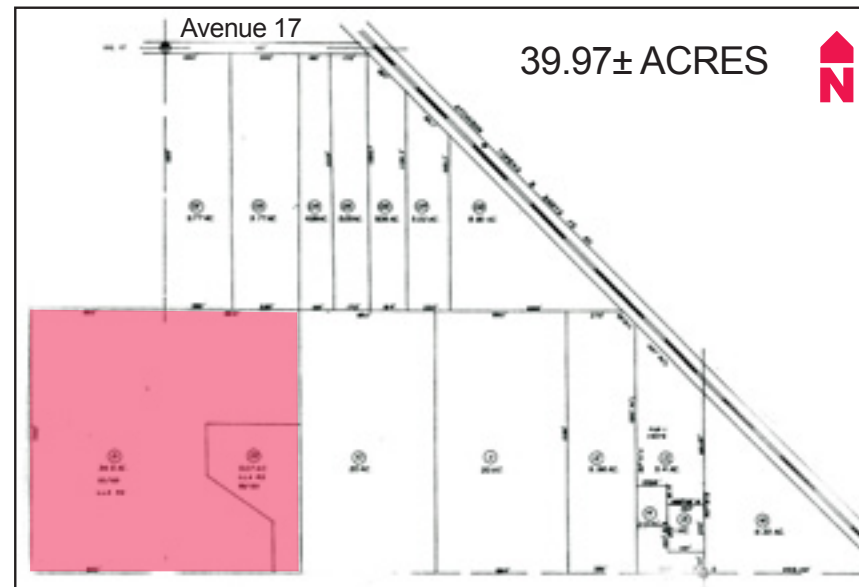
27561 & 27565 Ellis Street - Madera, CA



LOCATION MAP



ASSESSOR'S PARCEL MAP:



For Additional Information Please Contact:

Jeff Wolpert

Newmark Grubb Pearson Commercial
Vice President - Land Division
559.447.6295 - jwolpert@pearsonrealty.com
CA BRE# 01487371

Bill Enns

Pearson Realty
Senior Vice President - Farm Land Division
559.447.6238 - benns@pearsonrealty.com
CA BRE# 01335282

FRESNO OFFICE: 7480 N Palm Ave Suite 101 Fresno CA 93711, T 559.432.6200
VISALIA OFFICE: 3447 S Demaree St Visalia CA 93277, T 559.732.7300

www.pearsonrealty.com

Independently Owned and Operated

Procuring broker shall only be entitled to a commission, calculated in accordance with the rates approved by our principal only if such procuring broker executes a brokerage agreement acceptable to us and our principal and the conditions as set forth in the brokerage agreement are fully and unconditionally satisfied. Although all information furnished regarding property for sale, rental, or financing is from sources deemed reliable, such information has not been verified and no express representation is made nor is any to be implied as to the accuracy thereof and it is submitted subject to errors, omissions, change of price, rental or other conditions, prior sale, lease or financing, or withdrawal without notice and to any special conditions imposed by our principal.